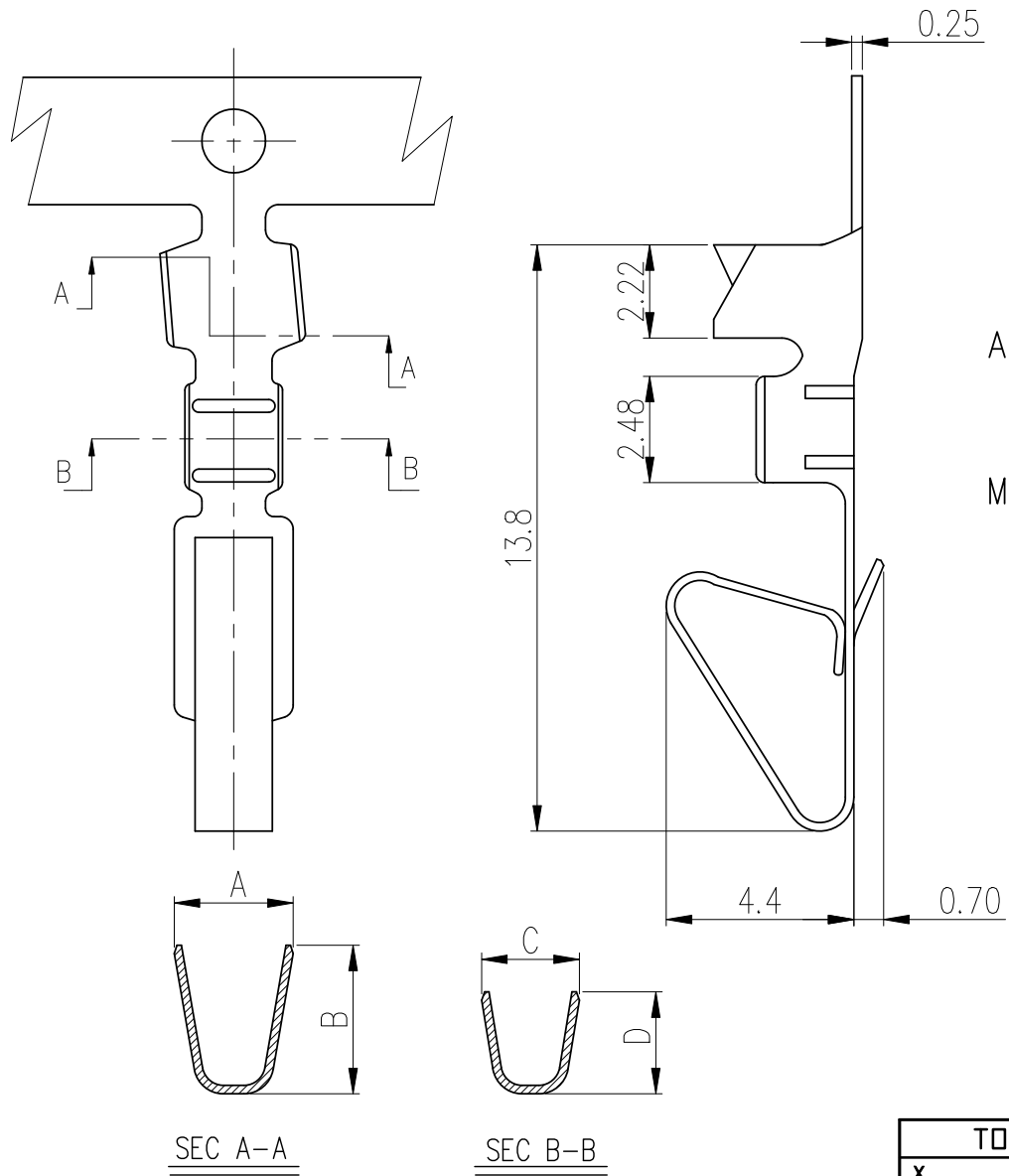


RoHS



CUST INFORMATION.

PART NO. NA	DRAWING NO. NA	REV. NA
----------------	-------------------	------------



NOTES:

1. MATERIAL: 0.25mm THICK COPPER ALLOY
2. FINISH: TIN OR GOLD PLATED
3. APPLICABLE WIRES: AWG #26~#18
4. BILL OF PART NO:
3961TXX-XX

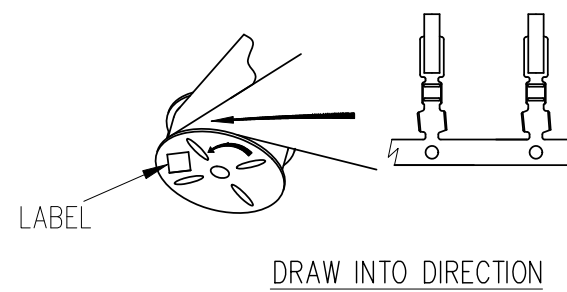
APPLICABLE WIRES:
 0=AWG#24~26
 2=AWG#18~22

PLATING TYPE: 1=PRE-TIN PLATED
 2=POST-TIN PLATED
 FINISH: B=BRIGHT TIN PLATED
 C=GOLD FLASH PLATED

MATERIAL: B=BRASS
 P=PHOSPHOR BRONZE

5. DIMENSION OF APPLICABLE WIRES:

WIRE	A	B	C	D
AWG#18~22	3.8	3.5	2.9	2.4
AWG#24~26	2.8	3.5	2.3	2.4



C		UPDATE DRAWING	LI SONG	2016/3/2
B		UPDATE DRAWING	LI SONG	2016/2/29
REV.	ECN NO	REVISION RECORD	DRAW	DATE

TOLERANCE		PART NO.		朝貴電子股份有限公司	
X. X.X ±0.30	X.XXX ±0.10	3961TXX-XX		CKM ELECTRONICS CO., LTD.	
X.XX ±0.20	Angular ±2°	DRAWING NO.		TITLE.	
UNIT: mm		C-396103XX		CKM3.96 PITCH CRIMP TERMINAL SOCKET	
DWG TYPE.		APPROVED BY	CHECKED BY	DRAWN BY	PAGE
Customer Drawing		Angus Chen	Sun Lee	Li Song	1 OF 1
		2016.03.10	2016.03.10	2016.03.10	SCALE
				4 : 1	
				REV. C	