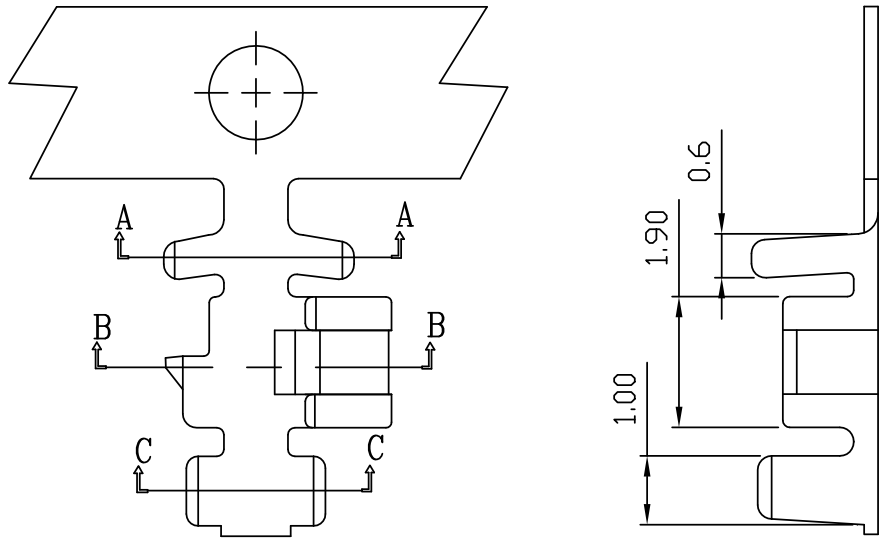
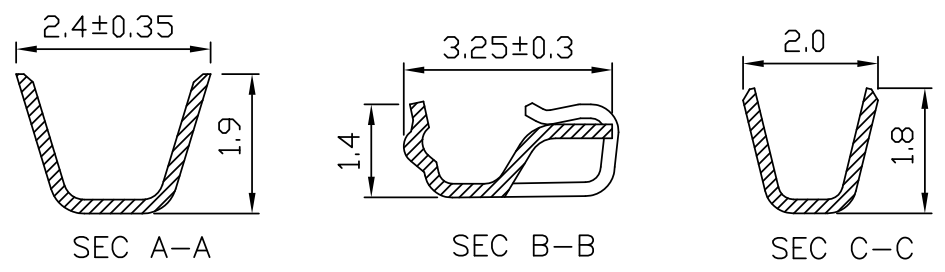


RoHS

CKM
2023.08.17
研发部



NOTE:
 1. TERMINAL MATERIAL: PHOSPHOR BRONZE.
 2. PLATED: TIN PLATED
 3. APPLICABLE WIRES: AWG#26~#28
 4. RoHS COMPLIANT
 5. BILL OF PART NO:
 2005TOP-X X
 PLATING TYPE: 1=PRE-TIN PLATED
 2=POST-TIN PLATED
 FINISH: B=BRIGHT TIN PLATED
 MATERIAL: P=PHOSPHOR BRONZE



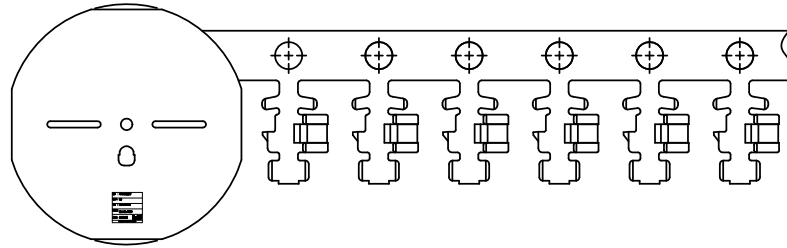
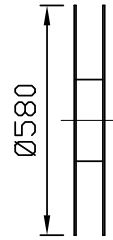
6. FOR AVAILABILITY, DELIVERY & MOQ, CONTACT CKM
 7. INSULATION O.D.:0.9~1.4mm.
 8. Q'TY REEL:15000PCS.

TOLERANCE		PART NO.		朝貴電子股份有限公司 CKM ELECTRONICS CO., LTD.	
X.	X.XXX ±0.10	2005TOP-XX		DESCRIPTION	
X.X	±0.30	DRAWING NO.		CKM 2005 SERIES	
X.XX	±0.20	2005030X		PAGE	
Angular ±2°		APPROVED BY	CHECKED BY	DRAWN BY	1 OF 2
UNIT: mm		Angus.Chen	Sun.Lee	Winner	REV. B
DWG TYPE.		2017.01.17	2017.01.17	2017.01.17	SCALE
Customer Drawing					6 : 1

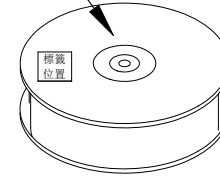
B		ADD PACKING DRAWING	Winner	2017.01.14
A		NEW RELEASE	Winner	2014.11.03
REV.	ECN NO	REVISION RECORD	DRAW	DATE

RoHS

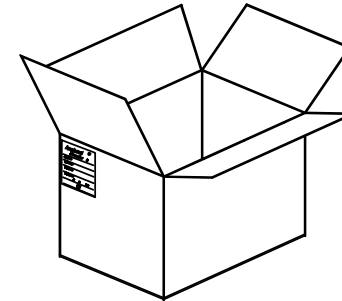
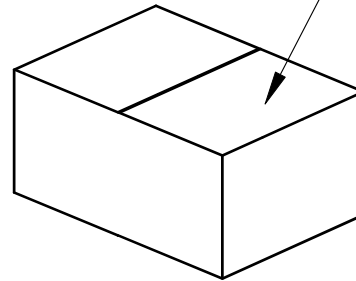
HF



LABEL 1=Q'TY : XX PCS



LABEL 2=Q'TY : XXXX PCS



POS	PAPER PLATE SIZE	LABEL 1 Q'TY
1	42-001(Ø580)	10000 PCS

CARTON SIZE (L*W*H)	LABEL 2 Q'TY	GROSS WEIGHT	NET WEIGHT
40-017(57.7*57.7*33.8cm)	120000 PCS	21.5 Kg	18.00 Kg

TOLERANCE X. X.XXX ±0.10 X.X ±0.30 X.XX ±0.20 Angular ±2°		PART NO. 2005TOP-XX		朝貴電子股份有限公司 CKM ELECTRONICS CO., LTD.	
UNIT: mm DWG TYPE. Customer Drawing		DRAWING NO. 2005030X		DESCRIPTION CKM 2005 SERIES	
APPROVED BY Angus.Chen 2017.01.17		CHECKED BY Sun.Lee 2017.01.17		DRAWN BY Winner 2017.01.17	
				PAGE 20F2	REV. B
				SCALE 1:1	

B		NEW RELEASE		2017.01.14
REV.	ECN NO	REVISION RECORD	DRAW	DATE