

Specifications:

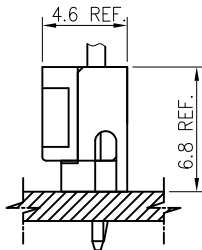
Circuit	2~15 Poles
Pitch between poles	2.00mm
Rated Voltage	100V AC,DC
Rated Current	3A (AWG #24)
Withstand Voltage	500V AC/minute
Contact Resistance	30mΩ Max.
Insulation Resistance	500MΩ Min.
Temperature Range	-25°~+85°C
Applicable Wire Range	AWG #24~#28

RoHS-Specification

Halogen-free products

Assembly Layout

Vertical Type



Ordering Code

① ② ③ ④ ⑤
2005 H -XP -X -HF

- ① Series No.
- ② Housing
- ③ No. of circuits: 2~16
- ④ Color Code: Blank(Natural) or X(Other)
- ⑤ HF: Halogen Free (or not)

① ② ③④ ⑤
2005 T -0P -XX

- ① Series No.
- ② Terminal
- ③ Crimp Type: 0=Standart Type
- ④ Material: Phosphor bronze
- ⑤ Plated Code: B1=Per-Tin Plated
B2=Post-Tin Plated

① ②③ ④ ⑤⑥ ⑦
2005 WX -XP -XX -HF

- ① Series No.
- ② Wafer
- ③ Entry Type: WV=Vertical
- ④ No. of circuits: 2~15
- ⑤ Plating code: A=Matte Tin
B=Bright Tin
C=Gold
- ⑥ Color Code: Blank(Natural) or X(Other)
- ⑦ HF: Halogen Free (or not)

Note: * (eg. A, B, X...) designates Plated thickness identification.
For availability, delivery, color and MOQ, contact CKM.

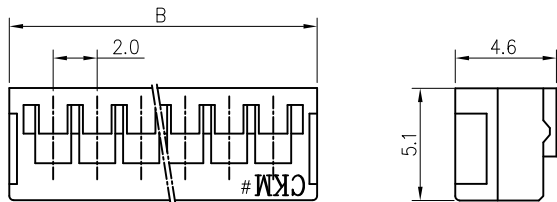
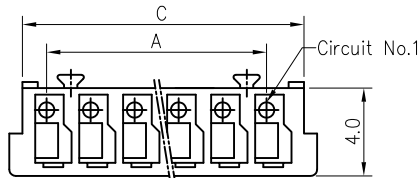
2005 Series

2.00mm[.079] pitch Crimp Terminal Socket



Features:

- * Single Row Terminal Socket
- * Material : Nylon 66 UL 94V-0 (Options)
- * Suitable for CKM 2005 series terminal
- * CKM P/N : 2005H-XP-X-XX



Dimensional & Ordering Information:

POS	Dimensions		
	A	B	C
2		6.0	4.8
3	4.0	8.0	6.8
4	6.0	10.0	8.8
5	8.0	12.0	10.8
6	10.0	14.0	12.8
7	12.0	16.0	14.8
8	14.0	18.0	16.8
9	16.0	20.0	18.8
10	18.0	22.0	20.8
11	20.0	24.0	22.8
12	22.0	26.0	24.8
13	24.0	28.0	26.8
14	26.0	30.0	28.8
15	28.0	32.0	30.8
16	30.0	34.0	32.8

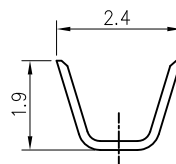
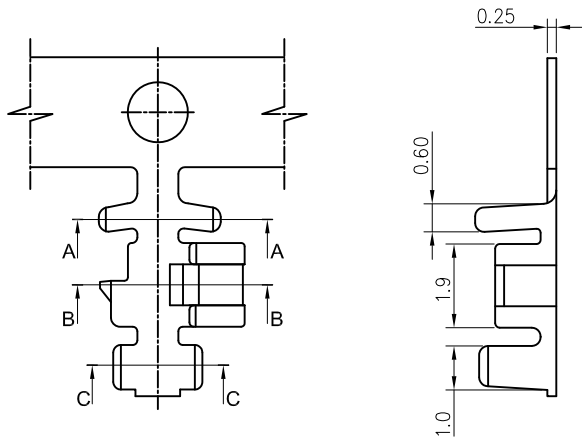
Note: X (eg. A, XX...) Designates Color, Material, identification.
For availability, delivery and MOQ, Please contact CKM.

2005 Series

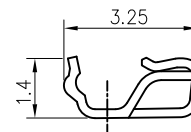
2.00mm[.079] pitch Crimp Terminal

Features:

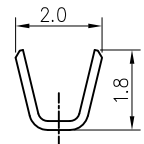
- * Used in CKM 2005 series socket
- * Material : 0.25mm thick Phosphor bronze, Tin or Gold-plated
- * CKM P/N : 2005T0P-BX



Section A-A



Section B-B



Section C-C

Dimensional & Ordering Information:

Part No.	2005T0P-BX
Wire Range	AWG #24~#28
Insulation O.D.	0.90~1.40mm
Material	Phosphor bronze
Finish	Tin-Plated

Note: * (eg. 0, A, B...) designates Au-plate thickness identification.
For availability, delivery and MOQ, Please contact CKM.

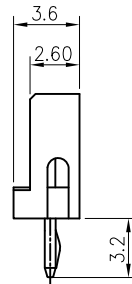
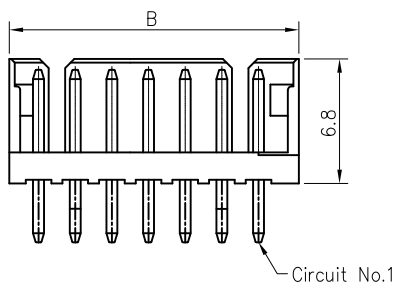
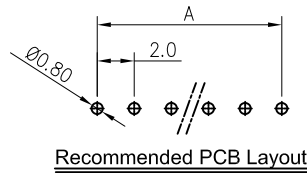
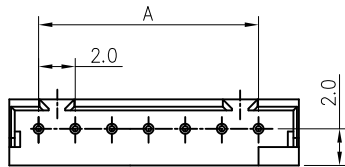
2005 Series

2.0mm[.079] pitch Wafer (Vertical-DIP Type)



Features:

- * Single Row Vertical-DIP Type Wafer
- * Material : Insulator: Thermoplastic UL 94V-0 (Options)
Contact Post: $\varnothing 0.50\text{mm}$ Copper Alloy, Tin or Gold-plated
- * Mates with CKM 2005 series socket
- * CKM P/N : 2005WV-XP-XX-HF



Dimensional & Ordering Information:

POS	Dimensions		
	A	B	C
2		5.8	4.9
3	4.0	7.8	6.9
4	6.0	9.8	8.9
5	8.0	11.8	10.9
6	10.0	13.8	12.9
7	12.0	15.8	14.9
8	14.0	17.8	16.9
9	16.0	19.8	18.9
10	18.0	21.8	20.9
11	20.0	23.8	22.9
12	22.0	25.8	24.9
13	24.0	27.8	26.9
14	26.0	29.8	28.9
15	28.0	31.8	30.9

Note: X (eg. A, XX...) Designates Color, Material, identification.
For availability, delivery and MOQ, Please contact CKM.