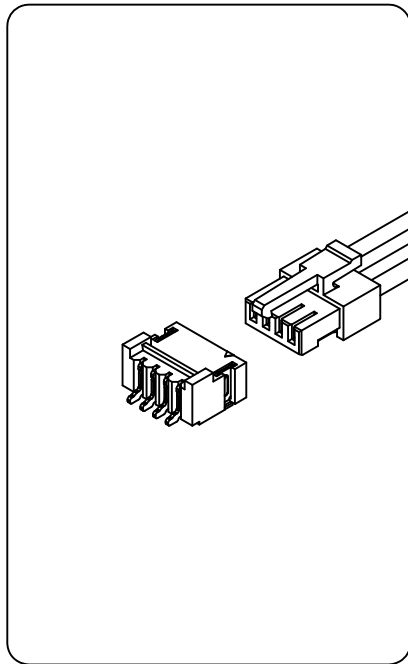


A1004 Series

1.00mm[.039] pitch Wire to Board Connector



Specifications:

Circuit	2~12 Poles
Pitch between poles	1.00mm
Rated Voltage	125V AC,DC
Rated Current	1A (AWG #28)
Withstand Voltage	500V AC/minute
Contact Resistance	20mΩ Max.
Insulation Resistance	100MΩ Min.
Temperature Range	-40°~+105°C
Applicable Wire Range	AWG #28~#32

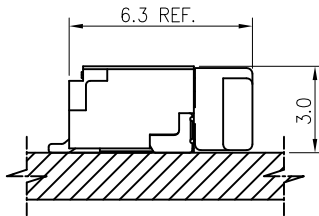
UL: Recognized No. E186634

RoHS-Specification

Halogen-free products

Assembly Layout

Right Angle Type



Ordering Code

① ② ③ ④ ⑤
A1004 HV -XX -X -HF

- ① Series No.
- ② Housing
- ③ No. of circuits: 02~12
- ④ Color Code: A(Natural) or X(other)
- ⑤ HF: Halogen Free (or not)

① ② ③④ ⑤
A1004 T XX -XX

- ① Series No.
- ② Terminal
- ③ Crimp Type: 0=Standart Type
- ④ Material: Phosphor bronze
- ⑤ Plated Code: 2=Tin Plated

① ②③ ④ ⑤⑥ ⑦
A1004 WX -XX -XX -HF

- ① Series No.
- ② Wafer
- ③ Entry Type: WR=Right angle
- ④ No. of circuits: 02~12
- ⑤ Plating code: A=Matte Tin
- ⑥ Color Code: A(Natural) or X(other)
- ⑦ HF: Halogen Free (or not)

Note: * (eg. A, B, X...) designates Plated thickness identification.
 For availability, delivery, color and MOQ, contact CKM.

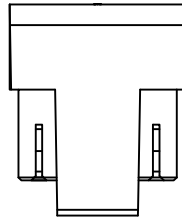
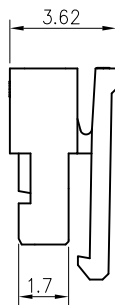
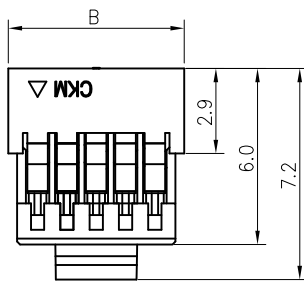
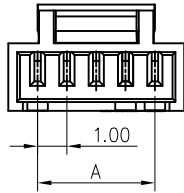
A1004 Series

1.00mm[.039] pitch Crimp Terminal Socket



Features:

- * Single Row Terminal Socket
- * Material : Nylon 66 UL 94V-0 (Natural)
- * Suitable for CKM A1004 series terminal
- * CKM P/N : A1004HV-XX-A-HF



Dimensional & Ordering Information:

POS	Dimensions	
	A	B
2		3.0
3	2.0	4.0
4	3.0	5.0
5	4.0	6.0
6	5.0	7.0
7	6.0	8.0
8	7.0	9.0
9	8.0	10.0
10	9.0	11.0
11	10.0	12.0
12	11.0	13.0

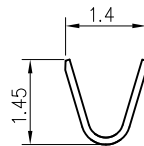
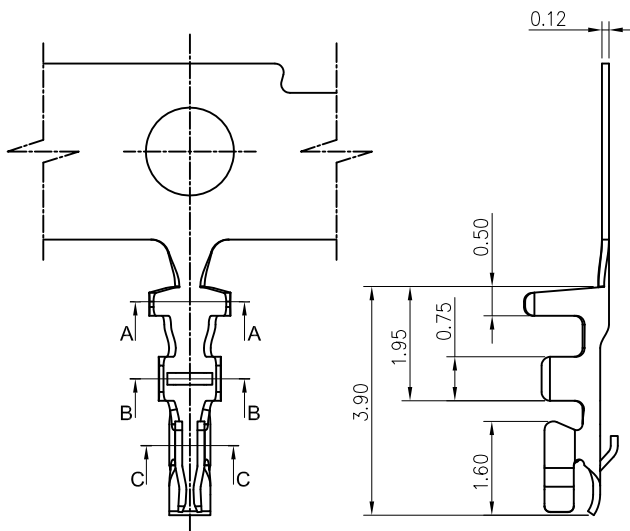
Note: X (eg. A, XX...) Designates Color, Material, identification.
For availability, delivery and MOQ, Please contact CKM.

A1004 Series

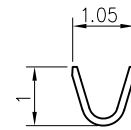
1.00mm[.039] pitch Crimp Terminal

Features:

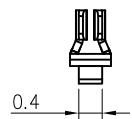
- * Used in CKM A1004 series socket
- * Material : 0.12mm thick Phosphor bronze, Tin-plated
- * CKM P/N : A1004T0P-2



Section A-A



Section B-B



Section C-C

Dimensional & Ordering Information:

Part No.	A1004T0P-2
Wire Range	AWG #28-#32
Insulation O.D.	0.92~0.65mm
Material	Phosphor bronze
Finish	Tin-Plated

Note: * (eg. 0, A, B...) designates Au-plate thickness identification.
For availability, delivery and MOQ, Please contact CKM.

A1004 Series

1.0mm[.039] pitch Wafer (Right Angle-SMT Type)



Features:

- * Single Row Right Angle-SMT Type Wafer
- * Material : Insulator: PA6T, UL 94V-0 (Natural)
 Contact Post: 0.20mm thick Copper Alloy, Tin or Gold-plated
 Solder Tab: 0.15mm thick Copper Alloy, Matte Tin-plated
- * Mates with CKM A1004 series socket
- * CKM P/N : A1004WR-XX-AA-HF

Dimensional & Ordering Information:

POS	Dimensions	
	A	B
2	1.0	3.5
3	2.0	4.5
4	3.0	5.5
5	4.0	6.5
6	5.0	7.5
7	6.0	8.5
8	7.0	9.5
9	8.0	10.5
10	9.0	11.5
11	10.0	12.5
12	11.0	13.5

Note: X (eg. A, XX...) Designates Color, Material, identification.
 For availability, delivery and MOQ, Please contact CKM.

