

## Specifications:

- Circuit: 8~40 Poles
- Pitch: 2.00mm
- Rated Voltage: 250V AC,DC
- Rated Current: 3.0A MAX (AWG #22)
- Withstand Voltage: 800V AC/minute
- Contact Resistance: 20mΩ Max.
- Insulation Resistance: 1000MΩ Min.
- Temperature Range: -40°~+105°C
- Applicable Wire Range: AWG #28~#22
- Insulation O.D.:  $\varnothing 0.76$  to  $\varnothing 1.5$ mm

RoHS-Specification

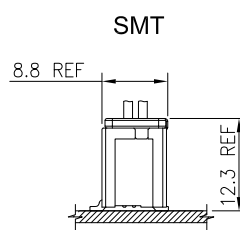
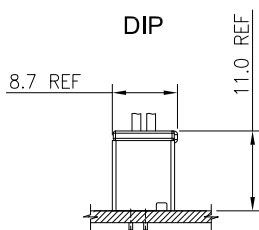
Halogen-free products

## Features

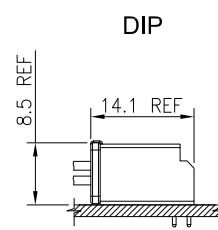
- Locking structure:  
Save space, prevent tangling and vibration from falling off
- Various Pin number options:  
Multi-signal transmission possible
- Two link forms and multiple color options:  
Offer design flexibility
- Positioning post:  
Offer design Mistake-proofing

## Assembly Layout

Vertical Type



Right Angle Type



## Ordering Code

① 2022 ② H ③ -XXP ④ -X ⑤ -HF

- ① Series No.
- ② Housing
- ③ No. of circuits: 08-40
- ④ Color Code: Blank(Natural) or X(Other)
- ⑤ HF: Halogen Free

① 2022 ② TXP ③ -B1

- ① Series No.
- ② Terminal
- ③ Crimp Type: 0=AWG # 26 to 22  
1=AWG # 28 to 24
- ④ Material: Phosphor bronze
- ⑤ Plated Code: B1=Pre-Tin Plated

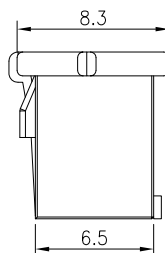
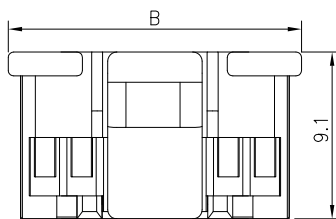
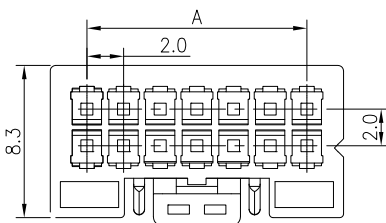
① 2022 ② WXX ③ -XXP ④ -XX ⑤ -XX ⑥ -HF

- ① Series No.
- ② Wafer
- ③ Entry Type: V=Vertical  
R=Right angle
- ④ Solder Type: Blank=DIP Type  
S=SMT Type
- ⑤ No. of circuits: 08~40
- ⑥ Plating code: A=Matte Tin  
B=Bright Tin  
C=Gold
- ⑦ Color Code: Blank(Natural) or X(Other)
- ⑧ Boss: Blank=W/Boss  
NB=W/O Boss
- ⑨ HF: Halogen Free

Note: \* (eg. A, B, X...) designates Plated thickness identification.  
For availability, delivery, color and MOQ, contact CKM.

## Housing

- 2.0mm pitch housing
- Material: PA66, UL 94V-0
- Suitable for CKM 2022 series terminal
- For finish, color, availability, delivery & MOQ, contact CKM
- CKM P/N: 2022H-XXP-XX-HF

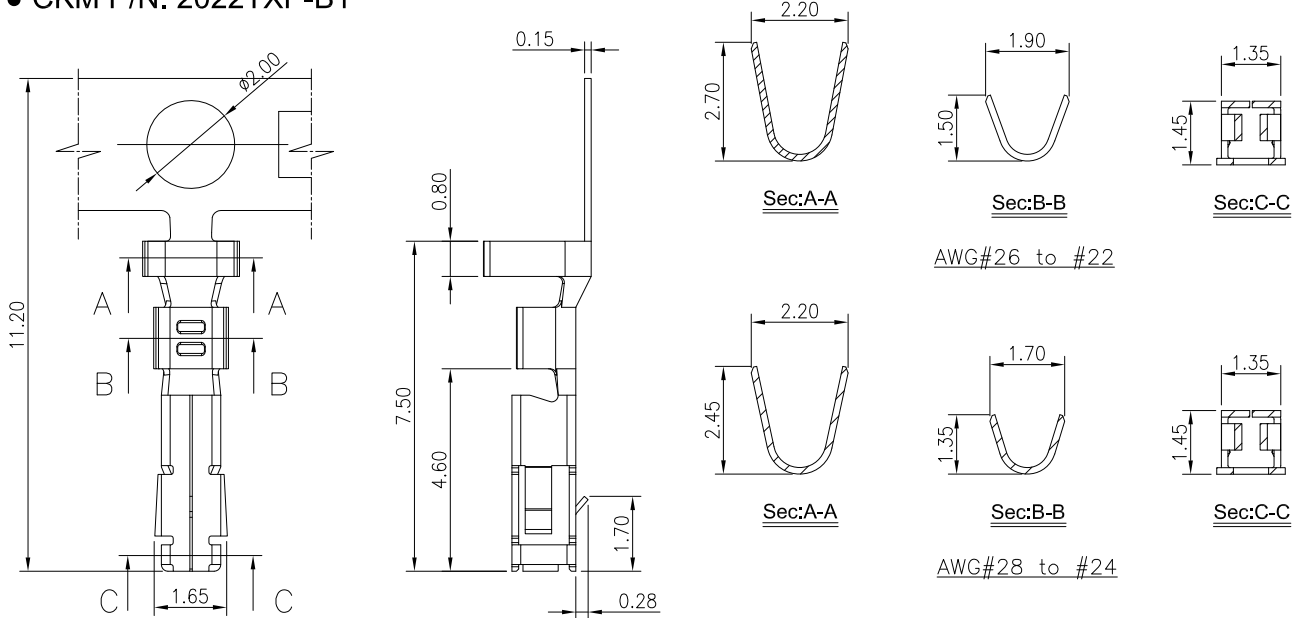


### Dimensional

POS	A	B
8	6.0	10.0
10	8.0	12.0
12	10.0	14.0
14	12.0	16.0
16	14.0	18.0
18	16.0	20.0
20	18.0	22.0
22	20.0	24.0
24	22.0	26.0
26	24.0	28.0
28	26.0	30.0
30	28.0	32.0
32	30.0	34.0
34	32.0	36.0
36	34.0	38.0
38	36.0	40.0
40	38.0	42.0

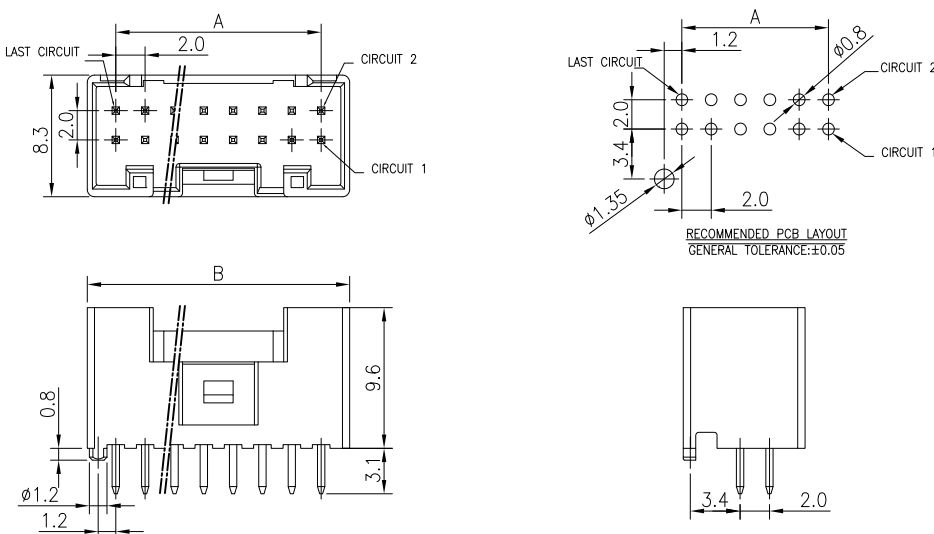
## Terminal

- 2.0mm pitch crimp terminal
- Material: 0.15mm thick phosphor bronze, Tin plating
- Used in CKM 2022 series housing
- For finish, availability, delivery & MOQ, contact CKM
- CKM P/N: 2022TXP-B1



## Wafer Vertical

- 2.0mm pitch vertical DIP type
- Material: Insulator: PA66, UL 94V-0  
Contact: SQ. 0.50mm brass, Tin plating
- Mates with CKM 2022 series housing
- For finish, color, availability, delivery & MOQ, contact CKM
- CKM P/N: 2022WV-XXP-XX-XX-HF

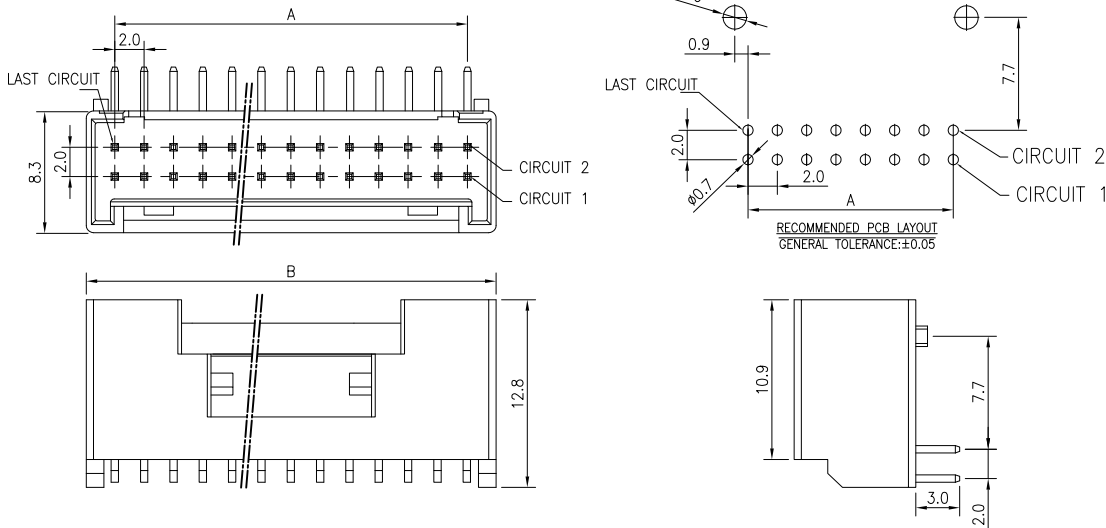


### Dimensional

POS	A	B
8	6.0	10.0
10	8.0	12.0
12	10.0	14.0
14	12.0	16.0
16	14.0	18.0
18	16.0	20.0
20	18.0	22.0
22	20.0	24.0
24	22.0	26.0
26	24.0	28.0
28	26.0	30.0
30	28.0	32.0
32	30.0	34.0
34	32.0	36.0
36	34.0	38.0
38	36.0	40.0
40	38.0	42.0

## Wafer Right Angle

- 2.0mm pitch right angle DIP type
- Material: Insulator: LCP, UL 94V-0  
Contact: SQ. 0.50mm brass, Tin plating
- Mates with CKM 2022 series housing
- For finish, color, availability, delivery & MOQ, contact CKM
- CKM P/N: 2022WR-XXP-XX-HF

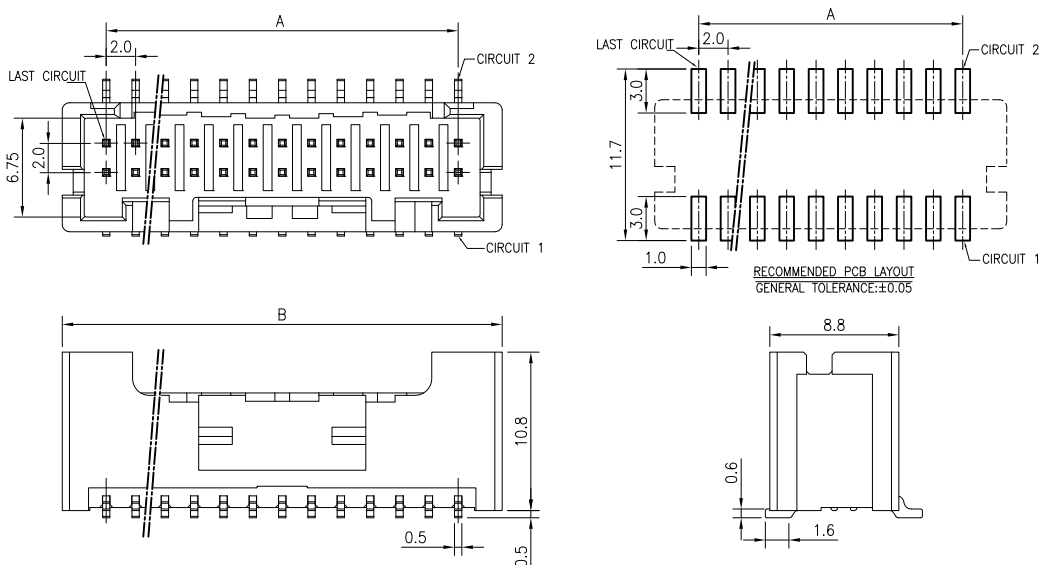


Dimensional

POS	A	B
8	6.0	10.0
10	8.0	12.0
12	10.0	14.0
14	12.0	16.0
16	14.0	18.0
18	16.0	20.0
20	18.0	22.0
22	20.0	24.0
24	22.0	26.0
26	24.0	28.0
28	26.0	30.0
30	28.0	32.0
32	30.0	34.0
34	32.0	36.0
36	34.0	38.0
38	36.0	40.0
40	38.0	42.0

## Wafer Vertical SMT

- 2.0mm pitch vertical SMT type
- Material: Insulator: PA6T, UL 94V-0  
Contact: 0.50mm thick brass, Tin plating
- Mates with CKM 2022 series housing
- For finish, color, availability, delivery & MOQ, contact CKM
- CKM P/N: 2022WVS-XXP-XX-HF



Dimensional

POS	A	B
10	8.0	12.0
12	10.0	14.0
14	12.0	16.0
16	14.0	18.0
18	16.0	20.0
20	18.0	22.0
22	20.0	24.0
24	22.0	26.0
26	24.0	28.0
28	26.0	30.0
30	28.0	32.0
32	30.0	34.0
34	32.0	36.0
36	34.0	38.0
38	36.0	40.0
40	38.0	42.0