

RoHS

HF

CUST INFORMATION.

PART NO.	DRAWING NO.	REV.

NO.	OLD P/N	NEW P/N	COLOR	CKM LOGO
1	25040201-XXHF	2504WV-XP-B-HF	NATURAL	WITH
2	25040205-XXHF	2504WV-XP-BE-HF	YELLOW	
3	25040207-XXHF	2504WV-XP-BG-HF	BLUE	
4	25040209-XXHF	2504WV-XP-BA-HF	BLACK	
5	25040211-XXHF	2504WR-XP-BJ-HF	GRAY	W/O
6	25040203-XXHF	2504WV-XP-B-NS-HF	NATURAL	
7		2504WV-XP-A-HF	NATURAL	

NOTE:

- MATERIAL:
  - 1.1 INSULATION: NYLON 66 UL 94V-0
  - 1.2 CONTACT: SQ. 0.64mm BRASS
- FINISH: TIN PLATED
- RoHS & HALOGEN FREE COMPLIANCE
- BILL OF PART NO:

2504WV-XP-XX-XX-XX-XX-HF

NO. OF CIRCUITS: 2~15

FINISH: A=MATTE TIN PLATED  
B=BRIGHT TIN PLATED

COLOR: BLANK=NATURAL OR A~J

KINK: BLANK=W KINK  
NK=W/O KINK

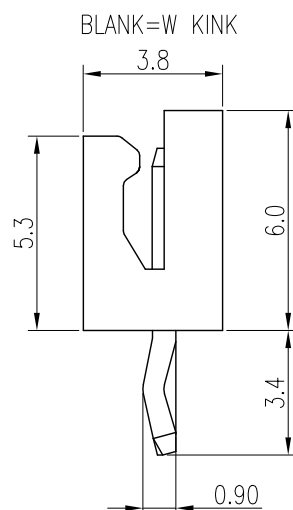
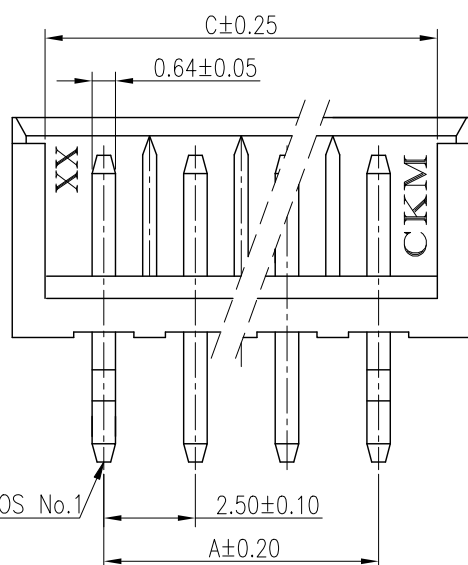
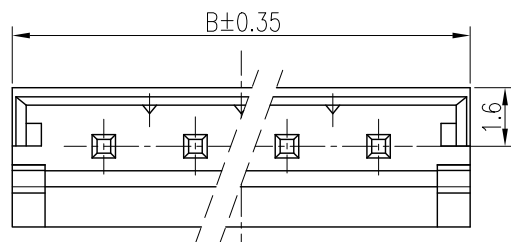
PACKAGE: BLANK=PE BAG (W/O CAP)  
PP=TRAY (W/O CAP)

LOGO: BLANK=CKM LOGO  
NS=W/O LOGO

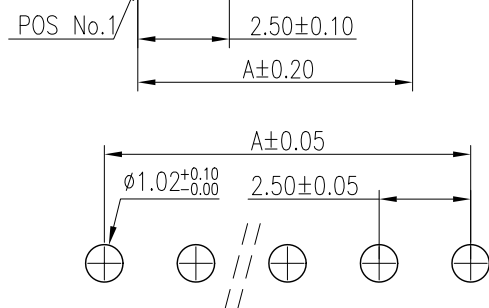
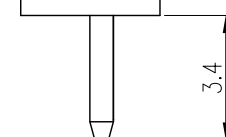
- FOR FINISH, COLOR, AVAILABILITY, DELIVERY & MOQ, PLEASE CONTACT CKM
- DIMENSIONAL

POS	A	B	C
2	2.5	7.5	5.7
3	5.0	10.0	8.2
4	7.5	12.5	10.7
5	10.0	15.0	13.2
6	12.5	17.5	15.7
7	15.0	20.0	18.2
8	17.5	25.5	20.7
9	20.0	25.0	23.2
10	25.5	27.5	25.7
11	25.0	30.0	28.2
12	27.5	32.5	30.7
13	30.0	35.0	33.2
14	32.5	37.5	35.7
15	35.0	40.0	38.2

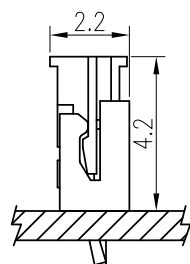
COLOR CODE	
BLANK	NATURAL
A	BLACK
C	RED
E	YELLOW
G	BLUE
J	GRAY



NK=W/O KINK



RECOMMENDED PCB LAYOUT  
PCB THK=1.0~1.6



TOP ENTRY TYPE  
SCALE 1:2

<b>TOLERANCE</b>		<b>PART NO.</b>		朝貴電子股份有限公司 CKM ELECTRONICS CO., LTD.	
X. X.X ±0.30 X.XX ±0.20	X.XXX ±0.10 Angular ±2°	2504WV-XP-XX-XX-XX-XX-HF			
		<b>DRAWING NO.</b>		<b>TITLE.</b>	
UNIT: mm		C-250402XX-XXHF		2.5mm PITCH VERTICAL DIP TYPE CONNECTOR	
<b>DWG TYPE.</b>		<b>APPROVED BY</b>	<b>CHECKED BY</b>	<b>DRAWN BY</b>	<b>PAGE</b>
Customer Drawing		Angus.chen 2023.10.30	Sun.lee 2023.10.30	Angel.tong 2023.10.30	1 OF 3
				<b>SCALE</b>	<b>REV.</b>
				5 : 1	H

H	EC-23100175	ADD TRAY PACKAGE	Angel.tong	2023.10.30
G	EC-23100167	ADD W/O KINK	Angel.tong	2023.10.09
REV.	ECN NO	REVISION RECORD	DRAW	DATE

1

RoHS

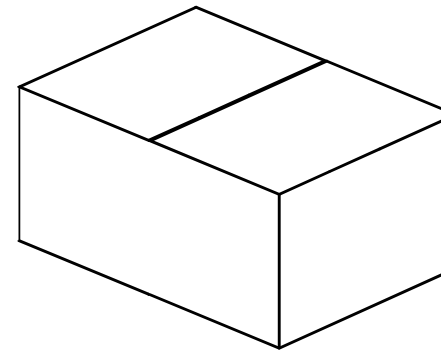
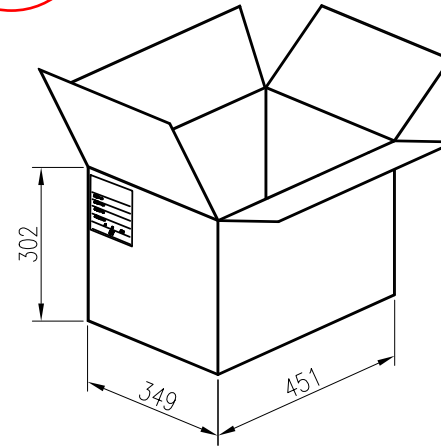
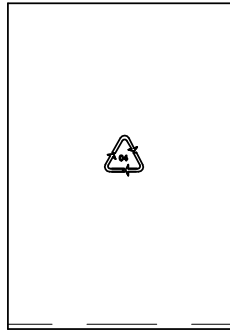
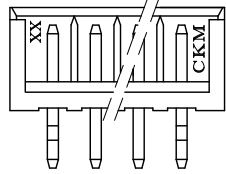
HF

6

CUST INFORMATION.

PART NO.	DRAWING NO.	REV.
----------	-------------	------

CKM  
2023.10.31  
研发部



POS	PE BAG	PCS	CARTON	PCS
2	1000		20000	
3	1000		20000	
4	1000		20000	
5	1000		10000	
6	1000		10000	
7	1000		10000	
8	1000		10000	
9	500		8000	
10	500		8000	
11	500		6000	
12	500		6000	
13	500		6000	
14	500		5000	
15	250		5000	

TOLERANCE		PART NO.		朝貴電子股份有限公司	
X.	X.XXX ±0.10	2504WV-XP-XX-XX-XX-XX-HF		CKM ELECTRONICS CO., LTD.	
X.X	±0.30	DRAWING NO.		TITLE.	
X.XX	±0.20	C-250402XX-XXHF		2.5mm PITCH VERTICAL DIP TYPE CONNECTOR	
UNIT: mm		APPROVED BY	CHECKED BY	DRAWN BY	PAGE
DWG TYPE.		Angus.chen	Sun.lee	Angel.tong	2 OF 3
Customer Drawing		2023.10.30	2023.10.30	2023.10.30	SCALE
					5 : 1
					REV.
					H

H	EC-23100175	ADD TRAY PACKAGE	Angel.tong	2023.10.30
G	EC-23100167	ADD W/O KINK	Angel.tong	2023.10.09
REV.	ECN NO	REVISION RECORD	DRAW	DATE

1 RoHS

HF

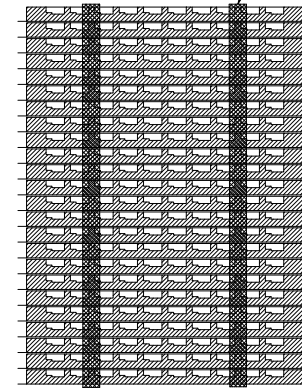
6 CUST INFORMATION.

PART NO.	DRAWING NO.	REV.
----------	-------------	------

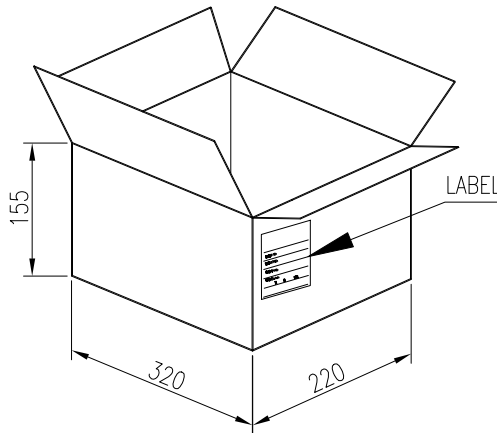
305(L)\*205(W)\*10(H) REF

PACKAGING DRAWING FOR REFERENCE ONLY,  
PLEASE OBJECT AS THE STANDARD

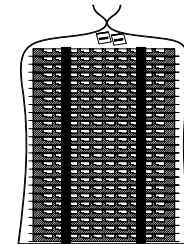
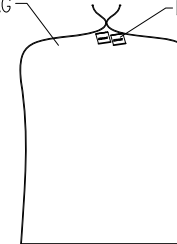
STRETCH FILM



POS	PCS/TRAY	PCS/CARTON
2	360	8280
3	270	6210
4	210	4830
5	180	4140
6	150	3450
7	130	2990
8	120	2760
9	100	2300
10	90	2070
11	90	2070
12	80	1840
13	70	1610
14	70	1610
15	60	1380
16	60	1380



PE BAG DRIER



TOLERANCE		PART NO.		朝貴電子股份有限公司	
X.	X.XXX ±0.10	2504WV-XP-XX-XX-XX-XX-HF		CKM ELECTRONICS CO., LTD.	
X.X	±0.30	DRAWING NO.		TITLE.	
X.XX	±0.20	C-250402XX-XXHF		2.5mm PITCH VERTICAL DIP TYPE CONNECTOR	
	UNIT:	APPROVED BY	CHECKED BY	DRAWN BY	PAGE
	mm	Angus.chen	Sun.lee	Angel.tong	3 OF 3
DWG TYPE.		2023.10.30	2023.10.30	2023.10.30	SCALE
Customer Drawing					5 : 1
					REV.
					H

H	EC-23100175	ADD TRAY PACKAGE	Angel.tong	2023.10.30
G	EC-23100167	ADD W/O KINK	Angel.tong	2023.10.09
REV.	ECN NO	REVISION RECORD	DRAW	DATE