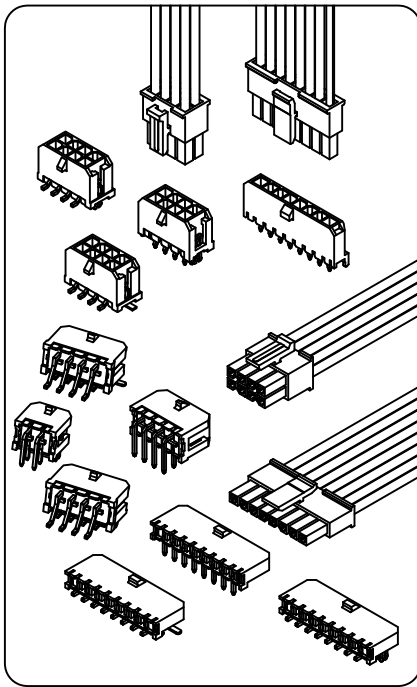


3001 Series

3.0mm[.118] pitch Wire to Board Connector



Specifications:

| | |
|-----------------------|-----------------|
| Circuit | 2~24Poles |
| Pitch between poles | 3.00mm |
| Rated Voltage | 250V AC,DC |
| Rated Current | 4.5A(AWG #20) |
| Withstand Voltage | 1000V AC/minute |
| Contact Resistance | 10mΩ Max. |
| Insulation Resistance | 1000MΩ Min. |
| Temperature Range | -40°~+125°C |
| Applicable Wire Range | AWG #20~#30 |

UL: Recognized No. E186634

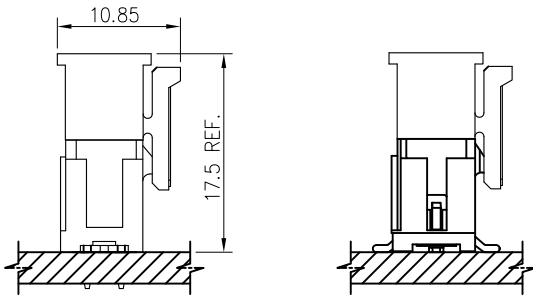
CSA: Certified No. LR110611

RoHS-Specification

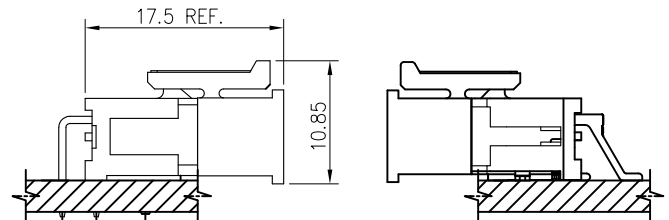
Halogen-free products

Assembly Layout

Vertical Type



Right Angle Type



Ordering Code

① ② ③ ④
3001 H XP -HF

- ① Series No.
- ② Housing
- ③ No. of circuits: 2~12 (Single Row)
2x1~2x12 (Dual Row)
- ④ HF=Halogen-free products

① ② ③ ④ ⑤
3001 T X X -XX

- ① Series No.
- ② Terminal
- ③ Crimping type Code: 0=Standard
2=High grip type
- ④ Material Code: P=Phosphor bronze
H=High conductivity
- ⑤ Plating code: A=Matte-Tin, B=Bright-Tin
C=Gold-Plated

① ② ③ ④
3001 XXX -XP -HF

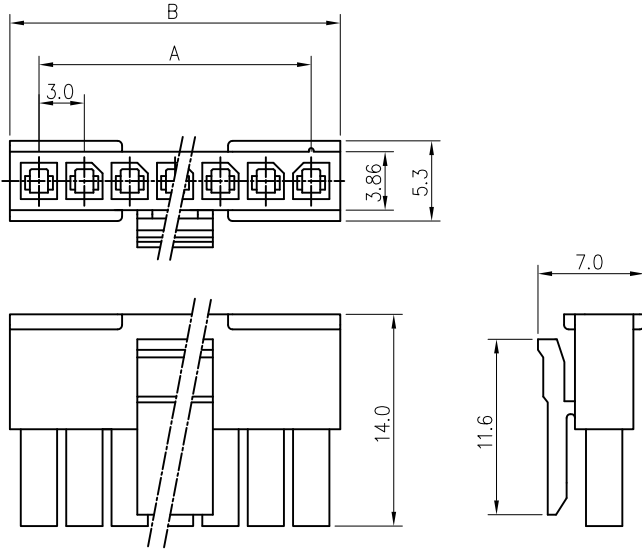
- ① Series No.
- ② Option Code: WV=Vertical-DIP
WR=Right angle-DIP
WVS=Vertical-SMT
WRS=Right angle-SMT
- ③ No. of circuits: 2~12 (Single Row)
2x1~2x12 (Dual Row)
- ④ HF=Halogen-free products

3001 Series

3.0mm[.118] pitch Crimp Terminal Socket

Features:

- * Single Row Terminal Socket
- * Material : Nylon 66 UL 94V-0
- * Suitable for 3001 series terminal
- * CKM P/N : 3001H-XP-X-XX-HF



Dimensional & Ordering Information:

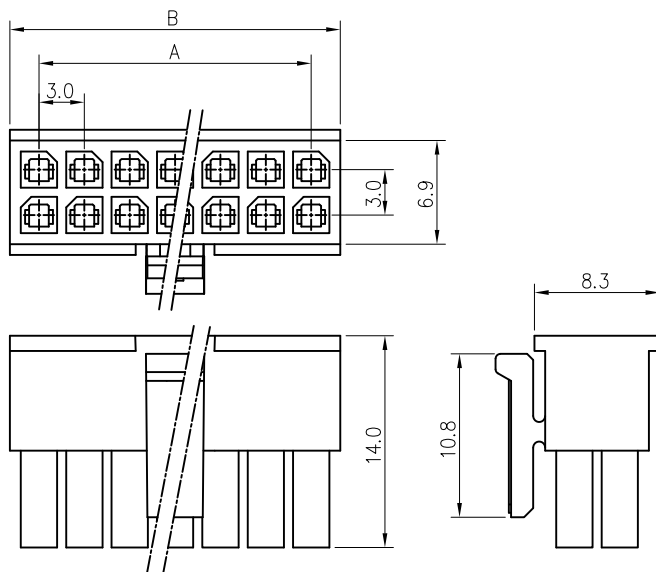
| POS | Dimensions | |
|-----|------------|-------|
| | A | B |
| 2 | 3.00 | 6.85 |
| 3 | 6.00 | 9.85 |
| 4 | 9.00 | 12.85 |
| 5 | 12.00 | 15.85 |
| 6 | 15.00 | 18.85 |
| 7 | 18.00 | 21.85 |
| 8 | 21.00 | 24.85 |
| 9 | 24.00 | 27.85 |
| 10 | 27.00 | 30.85 |
| 11 | 30.00 | 33.85 |
| 12 | 33.00 | 36.85 |

3001 Series

3.0mm[.118] pitch Crimp Terminal Socket

Features:

- * Dual Row Terminal Socket
- * Material : Nylon 66 UL 94V-0
- * Suitable for 3001 series terminal
- * CKM P/N : 3001H-2xXP-X-XX-HF



Dimensional & Ordering Information:

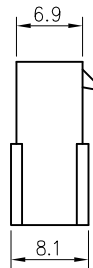
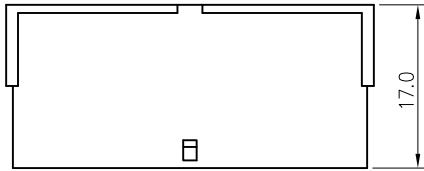
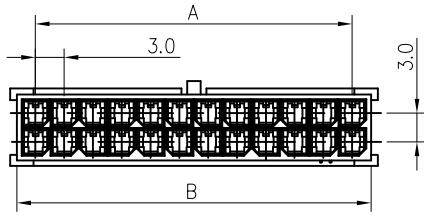
| POS | Dimensions | |
|------|------------|-------|
| | A | B |
| 2x1 | 3.00 | 3.85 |
| 2x2 | 6.00 | 6.85 |
| 2x3 | 9.00 | 9.85 |
| 2x4 | 12.00 | 12.85 |
| 2x5 | 15.00 | 15.85 |
| 2x6 | 18.00 | 18.85 |
| 2x7 | 21.00 | 21.85 |
| 2x8 | 24.00 | 24.85 |
| 2x9 | 27.00 | 27.85 |
| 2x10 | 30.00 | 30.85 |
| 2x11 | 33.00 | 33.85 |
| 2x12 | 36.00 | 36.85 |

3001 Series

3.0mm[.118] pitch Crimp Terminal Socket

Features:

- * Dual Row Terminal Socket
- * Material : Nylon 66 UL 94V-0
- * Suitable for 3001 series terminal
- * CKM P/N : 3001HM-2xXP-X-XX-HF



Dimensional & Ordering Information:

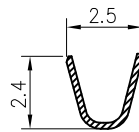
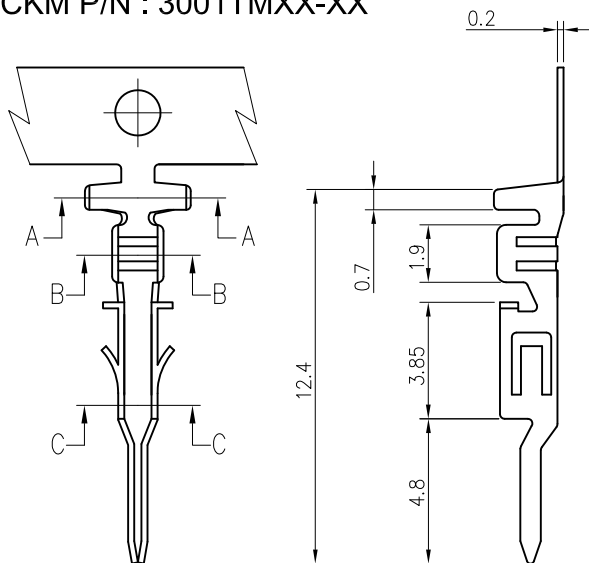
| POS | Dimensions | |
|------|------------|-------|
| | A | B |
| 2x1 | 3.00 | 3.90 |
| 2x2 | 3.00 | 6.90 |
| 2x3 | 6.00 | 9.90 |
| 2x4 | 9.00 | 12.90 |
| 2x5 | 12.00 | 15.90 |
| 2x6 | 15.00 | 18.90 |
| 2x7 | 18.00 | 21.90 |
| 2x8 | 21.00 | 24.90 |
| 2x9 | 24.00 | 27.90 |
| 2x10 | 27.00 | 30.90 |
| 2x11 | 30.00 | 33.90 |
| 2x12 | 33.00 | 36.90 |

3001 Series

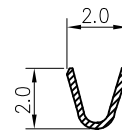
3.0mm[.118] pitch Crimp Terminal

Features:

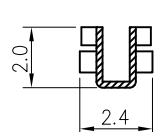
- * Used in 3001 series socket
- * Material : 0.20mm thick Copper alloy, Tin-plated;
or select Gold in Contact area, Tin on Crimp area, Nickel overall.
- * CKM P/N : 3001TMXX-XX



Section A-A



Section B-B



Section C-C

Dimensional & Ordering Information:

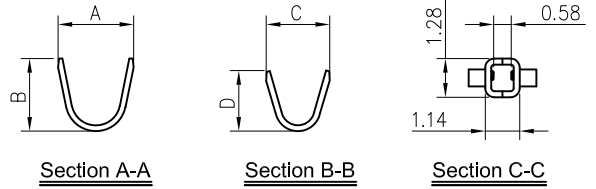
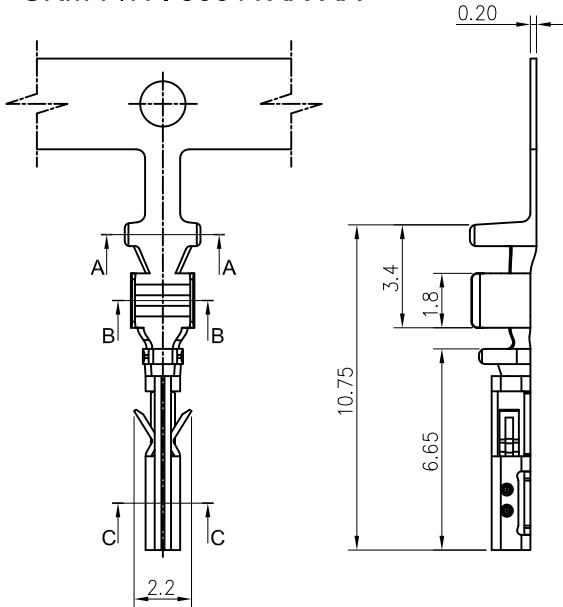
| | |
|-----------------|---------------------------|
| Part No. | 3001TMXX-XX |
| Wire Range | AWG #20~#24 |
| Insulation O.D. | 1.85mm |
| Material | Copper alloy |
| Finish | Tin-Plated or Gold-Plated |

3001 Series

3.0mm[.118] pitch Crimp Terminal

Features:

- * Used in 3001 series socket
- * Material : 0.20mm thick Copper alloy, Tin-plated;
or select Gold in Contact area, Tin on Crimp area, Nickel overall.
- * CKM P/N : 3001TXX-XX



| CRIMPING TYPE | A | B | C | D |
|---------------|------|------|------|------|
| #26~#30 | 2.10 | 2.00 | 1.60 | 1.50 |
| #20~#24 | 2.50 | 2.40 | 2.10 | 2.00 |

Dimensional & Ordering Information:

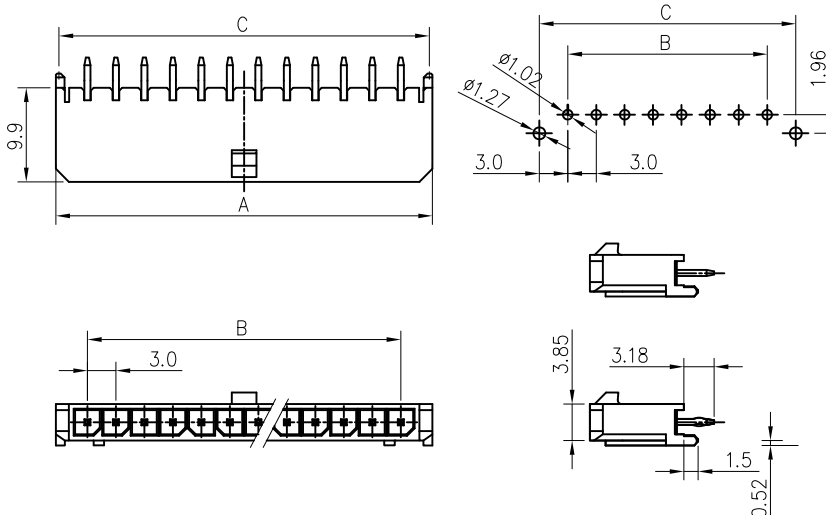
| | |
|-----------------|---------------------------|
| Part No. | 3001TXX-XX |
| Wire Range | AWG #20~#24 & #26~#30 |
| Insulation O.D. | 1.27~1.85mm |
| Material | Copper alloy |
| Finish | Tin-Plated or Gold-Plated |

3001 Series

3.0mm[.118] pitch Wafer (Vertical Type)

Features:

- * Single Row Vertical-DIP Type Wafer
- * Material : Insulator: Thermoplastic UL 94V-0
Contact Post: SQ. 0.64mm thickness Copper alloy, Matte Tin-plated
- * Mates with 3001 series socket
- * CKM P/N : 3001WV-XP-AX-XX-XX-XX-HF



Dimensional & Ordering Information:

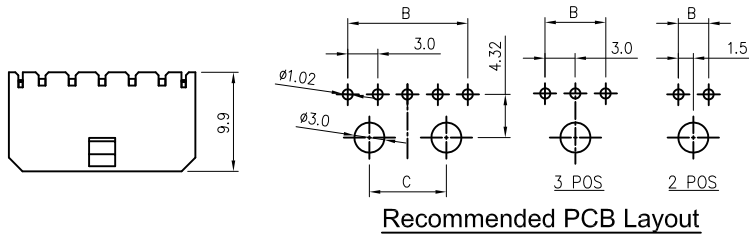
| POS | Dimensions | | |
|-----|------------|-------|-------|
| | A | B | C |
| 2 | 9.65 | 3.00 | 9.00 |
| 3 | 12.65 | 6.00 | 12.00 |
| 4 | 15.65 | 9.00 | 15.00 |
| 5 | 18.65 | 12.00 | 18.00 |
| 6 | 21.65 | 15.00 | 21.00 |
| 7 | 24.65 | 18.00 | 24.00 |
| 8 | 27.65 | 21.00 | 27.00 |
| 9 | 30.65 | 24.00 | 30.00 |
| 10 | 33.65 | 27.00 | 33.00 |
| 11 | 36.65 | 30.00 | 36.00 |
| 12 | 39.65 | 33.00 | 39.00 |

3001 Series

3.0mm[.118] pitch Wafer (Right Angle-DIP Type)

Features:

- * Single Row Right Angle-DIP Type Wafer
- * Material : Insulator: Thermoplastic UL 94V-0
Contact Post: SQ. 0.64mm Copper alloy, Matte Tin-plated
- * Mates with 3001 series socket
- * CKM P/N : 3001WR-XP-XX-XX-XX-XXX-HF



Dimensional & Ordering Information:

| POS | Dimensions | | |
|-----|------------|-------|-------|
| | A | B | C |
| 2 | 9.65 | 3.00 | / |
| 3 | 12.65 | 6.00 | / |
| 4 | 15.65 | 9.00 | 4.70 |
| 5 | 18.65 | 12.00 | 7.70 |
| 6 | 21.65 | 15.00 | 10.70 |
| 7 | 24.65 | 18.00 | 13.70 |
| 8 | 27.65 | 21.00 | 16.70 |
| 9 | 30.65 | 24.00 | 19.70 |
| 10 | 33.65 | 27.00 | 22.70 |
| 11 | 36.65 | 30.00 | 25.70 |
| 12 | 39.65 | 33.00 | 28.70 |

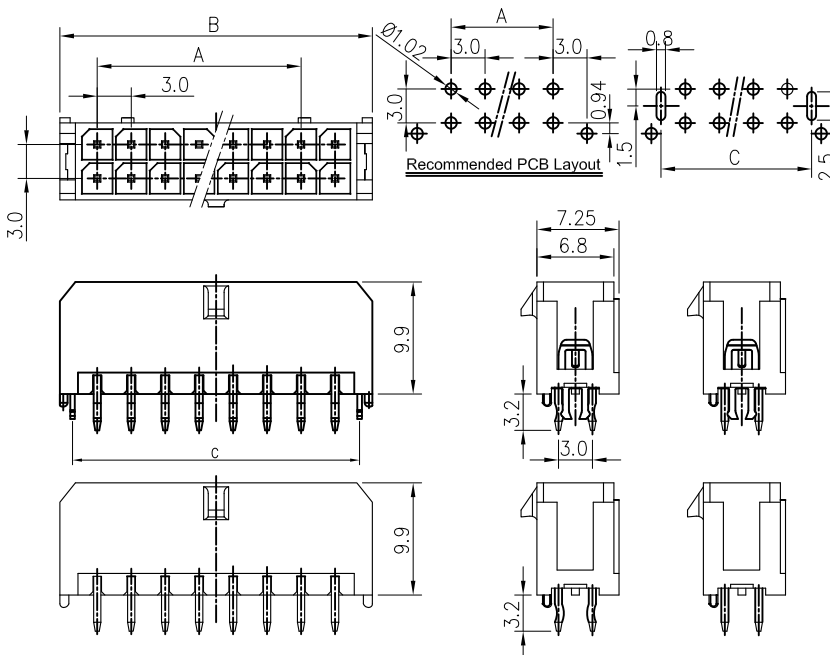


3001 Series

3.0mm[.118] pitch Wafer (Vertical Type)

Features:

- * Dual Row Vertical-DIP Type Wafer
- * Material : Insulator: Thermoplastic UL 94V-0
Contact Post: SQ. 0.64mm Copper alloy, Matte Tin-plated or Gold Flash-plated
- * Mates with 3001 series socket
- * CKM P/N : 3001WV-2xXP-XX-XX-XX-XX-XX-HF (Matte Tin)



Dimensional & Ordering Information:

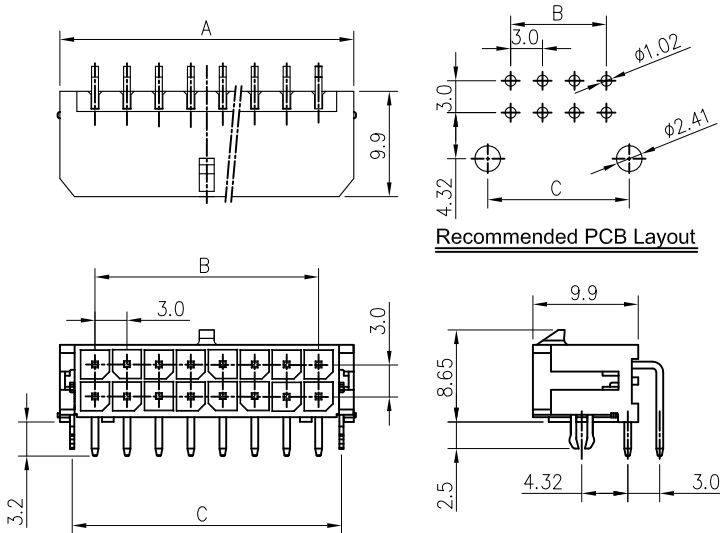
| POS | Dimensions | | |
|------|------------|-------|-------|
| | A | B | C |
| 2x1 | / | 6.60 | 4.30 |
| 2x2 | 3.00 | 9.60 | 7.30 |
| 2x3 | 6.00 | 12.60 | 10.30 |
| 2x4 | 9.00 | 15.60 | 13.30 |
| 2x5 | 12.00 | 18.60 | 16.30 |
| 2x6 | 15.00 | 21.60 | 19.30 |
| 2x7 | 18.00 | 24.60 | 22.30 |
| 2x8 | 21.00 | 27.60 | 25.30 |
| 2x9 | 24.00 | 30.60 | 28.30 |
| 2x10 | 27.00 | 33.60 | 31.30 |
| 2x11 | 30.00 | 36.60 | 34.30 |
| 2x12 | 33.00 | 39.60 | 37.30 |

3001 Series

3.0mm[.118] pitch Wafer (Right Angle-DIP Type)

Features:

- * Dual Row Right Angle-DIP Type Wafer
- * Material : Insulator: Thermoplastic UL 94V-0
Contact Post: SQ. 0.64mm High conductivity, Matte Tin-plated or Gold Flash-plated
Boardlock: 0.40mm thickness Brass, Matte Tin-plated
- * Mates with 3001 series socket
- * CKM P/N : 3001WR-2xXP-XX-XX-HC-HF (Matte Tin)



Dimensional & Ordering Information:

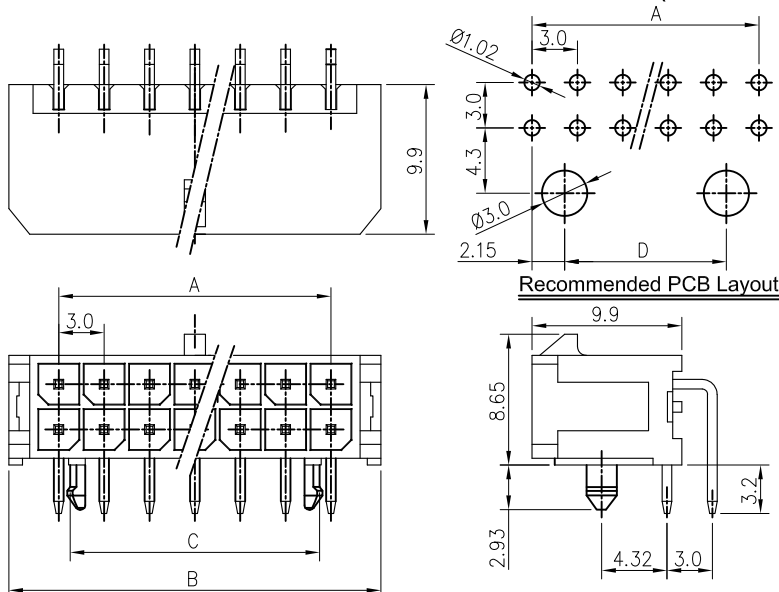
| POS | Dimensions | | |
|------|------------|-------|-------|
| | A | B | C |
| 2x1 | 6.60 | | 4.30 |
| 2x2 | 9.60 | 3.00 | 7.30 |
| 2x3 | 12.60 | 6.00 | 10.30 |
| 2x4 | 15.60 | 9.00 | 13.30 |
| 2x5 | 18.60 | 12.00 | 16.30 |
| 2x6 | 21.60 | 15.00 | 19.30 |
| 2x7 | 24.60 | 18.00 | 22.30 |
| 2x8 | 27.60 | 21.00 | 25.30 |
| 2x9 | 30.60 | 24.00 | 28.30 |
| 2x10 | 33.60 | 27.00 | 31.30 |
| 2x11 | 36.60 | 30.00 | 34.30 |
| 2x12 | 39.60 | 33.00 | 37.30 |

3001 Series

3.0mm[.118] pitch Wafer (Right Angle-DIP Type)

Features:

- * Dual Row Right Angle-DIP Type Wafer
- * Material : Insulator: Thermoplastic UL 94V-0
Contact Post: SQ. 0.64mm Copper alloy, Matte Tin-plated or Gold Flash-plated
- * Mates with 3001 series socket
- * CKM P/N : 3001WR-2AxXP-XX-XX-XX-XX-HF (Matte Tin)



Dimensional & Ordering Information:

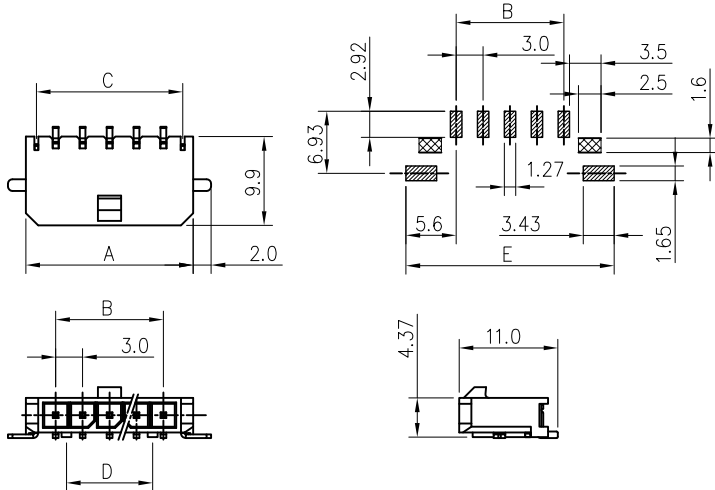
| POS | Dimensions | | | |
|------|------------|-------|-------|-------|
| | A | B | C | D |
| 2x1 | | 6.60 | 2.80 | |
| 2x2 | 3.00 | 9.60 | 2.80 | |
| 2x3 | 6.00 | 12.60 | 2.80 | |
| 2x4 | 9.00 | 15.60 | 7.50 | 4.70 |
| 2x5 | 12.00 | 18.60 | 10.50 | 7.70 |
| 2x6 | 15.00 | 21.60 | 13.50 | 10.70 |
| 2x7 | 18.00 | 24.60 | 16.50 | 13.70 |
| 2x8 | 21.00 | 27.60 | 19.50 | 16.70 |
| 2x9 | 24.00 | 30.60 | 22.50 | 19.70 |
| 2x10 | 27.00 | 33.60 | 25.50 | 22.70 |
| 2x11 | 30.00 | 36.60 | 28.50 | 25.70 |
| 2x12 | 33.00 | 39.60 | 31.50 | 28.70 |

3001 Series

3.0mm[.118] pitch Wafer (Right Angle-SMT Type)

Features:

- * Single Row Right Angle-SMT Type Wafer
- * Material : Insulator: Thermoplastic UL 94V-0
Contact Post: 0.64mm thickness Copper alloy, Matte Tin-plated or Gold Flash-plated
Boardlock: 0.40mm thickness Brass, Matte Tin-plated
- * Mates with 3001 series socket
- * CKM P/N : 3001WRS-XP-XX-XX-HF (Matte Tin)



Dimensional & Ordering Information:

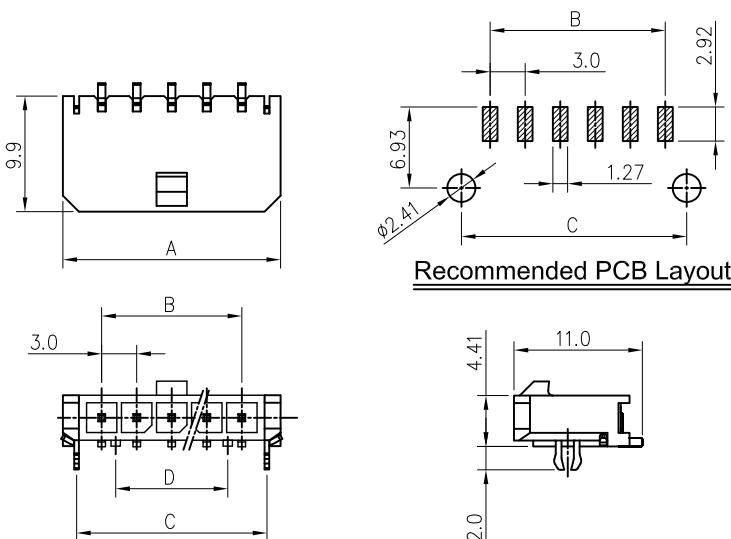
| POS | Dimensions | | | |
|-----|------------|-------|-------|-------|
| | A | B | C | D |
| 2 | 9.65 | 3.00 | 14.20 | 3.60 |
| 3 | 12.65 | 6.00 | 17.20 | 3.60 |
| 4 | 15.65 | 9.00 | 20.20 | 6.60 |
| 5 | 18.65 | 12.00 | 23.20 | 9.60 |
| 6 | 21.65 | 15.00 | 26.20 | 12.60 |
| 7 | 24.65 | 18.00 | 29.20 | 15.60 |
| 8 | 27.65 | 21.00 | 32.20 | 18.60 |
| 9 | 30.65 | 24.00 | 35.20 | 21.60 |
| 10 | 33.65 | 27.00 | 38.20 | 24.60 |
| 11 | 36.65 | 30.00 | 41.20 | 27.60 |
| 12 | 39.65 | 33.00 | 44.20 | 30.60 |

3001 Series

3.0mm[.118] pitch Wafer (Right Angle-SMT Type)

Features:

- * Single Row Right Angle-SMT Type Wafer
- * Material : Insulator: Thermoplastic UL 94V-0
Contact Post: 0.64mm thickness Copper alloy, Matte Tin-plated or Gold Flash-plated
Boardlock: 0.40mm thickness Brass, Matte Tin-plated
- * Mates with 3001 series socket
- * CKM P/N : 3001WRS-XPC-XX-XX-HF (Matte Tin)



Dimensional & Ordering Information:

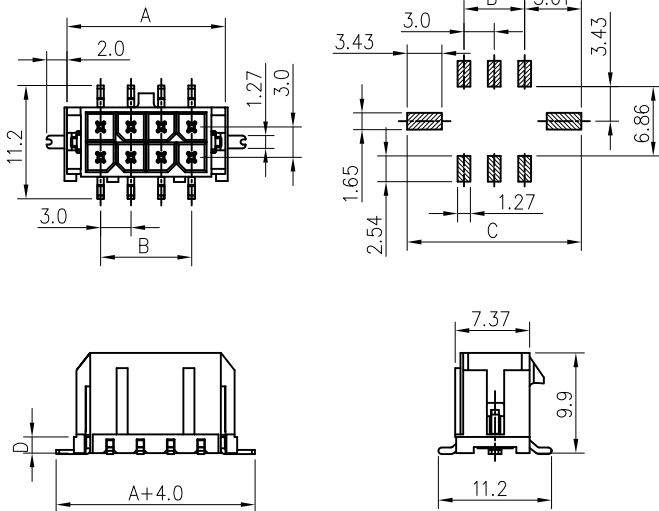
| POS | Dimensions | | | |
|-----|------------|-------|-------|-------|
| | A | B | C | D |
| 2 | 9.65 | 3.00 | 7.30 | 3.60 |
| 3 | 12.65 | 6.00 | 10.30 | 6.60 |
| 4 | 15.65 | 9.00 | 13.30 | 9.60 |
| 5 | 18.65 | 12.00 | 16.30 | 12.60 |
| 6 | 21.65 | 15.00 | 19.30 | 15.60 |
| 7 | 24.65 | 18.00 | 22.30 | 18.60 |
| 8 | 27.65 | 21.00 | 25.30 | 21.60 |
| 9 | 30.65 | 24.00 | 28.30 | 24.60 |
| 10 | 33.65 | 27.00 | 31.30 | 27.60 |
| 11 | 36.65 | 30.00 | 34.30 | 30.60 |
| 12 | 39.65 | 33.00 | 37.30 | 33.60 |

3001 Series

3.0mm[.118] pitch Wafer (Vertical Type)

Features:

- * Dual Row Vertical-SMT Type Wafer
- * Material : Insulator: Thermoplastic UL 94V-0
Contact Post: 0.64mm thickness Copper alloy, Matte Tin-plated or Gold Flash-plated
Solder Tab: 0.40mm thickness Brass, Matte Tin-plated
- * Mates with 3001 series socket
- * CKM P/N : 3001WVS-2xXP-XX-XX-XX-XX-HF (Matte Tin)



Dimensional & Ordering Information:

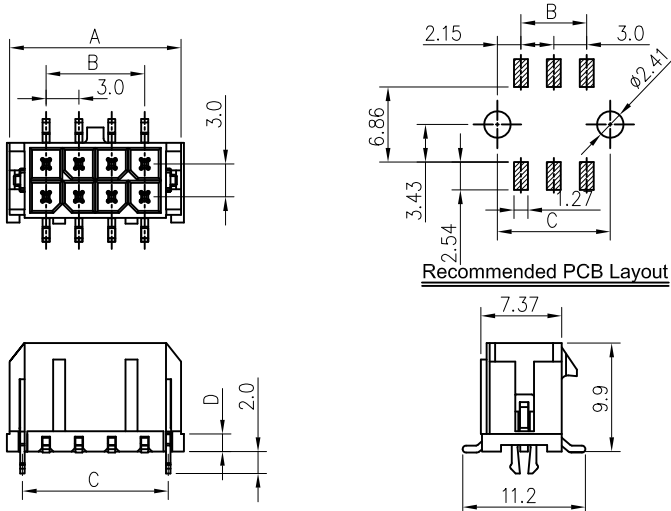
| POS | Dimensions | | | |
|------|------------|-------|-------|------|
| | A | B | C | D |
| 2x1 | 6.65 | 3.00 | 11.20 | 6.74 |
| 2x2 | 9.65 | 3.00 | 14.20 | |
| 2x3 | 12.65 | 6.00 | 17.20 | 1.60 |
| 2x4 | 15.65 | 9.00 | 20.20 | |
| 2x5 | 18.65 | 12.00 | 23.20 | |
| 2x6 | 21.65 | 15.00 | 26.20 | |
| 2x7 | 24.65 | 18.00 | 29.20 | |
| 2x8 | 27.65 | 21.00 | 32.20 | |
| 2x9 | 30.65 | 24.00 | 35.20 | |
| 2x10 | 33.65 | 27.00 | 38.20 | |
| 2x11 | 36.65 | 30.00 | 41.20 | |
| 2x12 | 39.65 | 33.00 | 44.20 | |

3001 Series

3.0mm[.118] pitch Wafer (Vertical Type)

Features:

- * Dual Row Vertical-SMT Type Wafer
- * Material : Insulator: Thermoplastic UL 94V-0
Contact Post: 0.64mm thickness Copper alloy, Matte Tin-plated or Gold Flash-plated
Boardlock: 0.40mm thickness Brass, Matte Tin-plated
- * Mates with 3001 series socket
- * CKM P/N : 3001WVS-2CxXP-XX-XX-XX-XX-HF (Matte Tin)



Dimensional & Ordering Information:

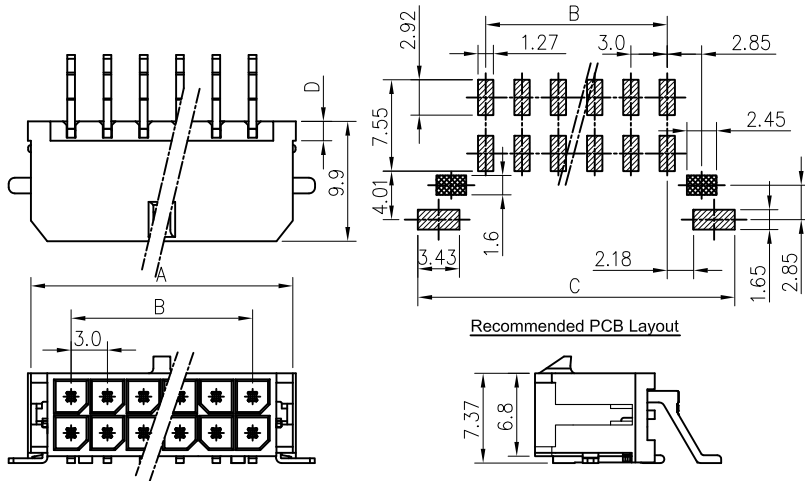
| POS | Dimensions | | | |
|------|------------|-------|-------|------|
| | A | B | C | D |
| 2x1 | 6.65 | 3.00 | 4.30 | 6.74 |
| 2x2 | 9.65 | 3.00 | 7.30 | |
| 2x3 | 12.65 | 6.00 | 10.30 | 1.60 |
| 2x4 | 15.65 | 9.00 | 13.30 | |
| 2x5 | 18.65 | 12.00 | 16.30 | |
| 2x6 | 21.65 | 15.00 | 19.30 | |
| 2x7 | 24.65 | 18.00 | 22.30 | |
| 2x8 | 27.65 | 21.00 | 25.30 | |
| 2x9 | 30.65 | 24.00 | 28.30 | |
| 2x10 | 33.65 | 27.00 | 31.30 | |
| 2x11 | 36.65 | 30.00 | 34.30 | |
| 2x12 | 39.65 | 33.00 | 37.30 | |

3001 Series

3.0mm[.118] pitch Wafer (Right Angle-SMT Type)

Features:

- * Dual Row Right Angle-SMT Type Wafer
- * Material : Insulator: Thermoplastic UL 94V-0
Contact Post: 0.64mm thickness Copper alloy, Matte Tin-plated or Gold Flash-plated
Solder Tab: 0.40mm thickness Brass, Matte Tin-plated
- * Mates with 3001 series socket
- * CKM P/N : 3001WRS-2xXP-XX-XX-XX-HF (Matte Tin)



Dimensional & Ordering Information:

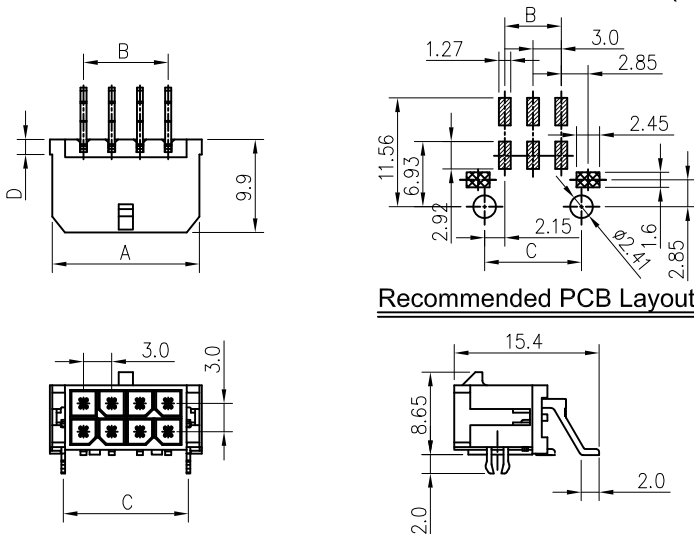
| POS | Dimensions | | | |
|------|------------|-------|-------|------|
| | A | B | C | D |
| 2x1 | 6.65 | 3.00 | 11.20 | 6.74 |
| 2x2 | 9.65 | 3.00 | 14.20 | |
| 2x3 | 12.65 | 6.00 | 17.20 | 1.60 |
| 2x4 | 15.65 | 9.00 | 20.20 | |
| 2x5 | 18.65 | 12.00 | 23.20 | |
| 2x6 | 21.65 | 15.00 | 26.20 | |
| 2x7 | 24.65 | 18.00 | 29.20 | |
| 2x8 | 27.65 | 21.00 | 32.20 | |
| 2x9 | 30.65 | 24.00 | 35.20 | |
| 2x10 | 33.65 | 27.00 | 38.20 | |
| 2x11 | 36.65 | 30.00 | 41.20 | |
| 2x12 | 39.65 | 33.00 | 44.20 | |

3001 Series

3.0mm[.118] pitch Wafer (Right Angle-SMT Type)

Features:

- * Dual Row Right Angle-SMT Type Wafer
- * Material : Insulator: Thermoplastic UL 94V-0
Contact Post: 0.64mm thickness Copper alloy, Matte Tin-plated or Gold Flash-plated
Boardlock: 0.40mm thickness Brass, Matte Tin-plated
- * Mates with 3001 series socket
- * CKM P/N : 3001WRS-2CxXP-XX-XX-XX-HF (Matte Tin)



Dimensional & Ordering Information:

| POS | Dimensions | | | |
|------|------------|-------|-------|------|
| | A | B | C | D |
| 2x1 | 6.65 | 3.00 | 4.30 | 6.74 |
| 2x2 | 9.65 | 3.00 | 7.30 | |
| 2x3 | 12.65 | 6.00 | 10.30 | 1.60 |
| 2x4 | 15.65 | 9.00 | 13.30 | |
| 2x5 | 18.65 | 12.00 | 16.30 | |
| 2x6 | 21.65 | 15.00 | 19.30 | |
| 2x7 | 24.65 | 18.00 | 22.30 | |
| 2x8 | 27.65 | 21.00 | 25.30 | |
| 2x9 | 30.65 | 24.00 | 28.30 | |
| 2x10 | 33.65 | 27.00 | 31.30 | |
| 2x11 | 36.65 | 30.00 | 34.30 | |
| 2x12 | 39.65 | 33.00 | 37.30 | |

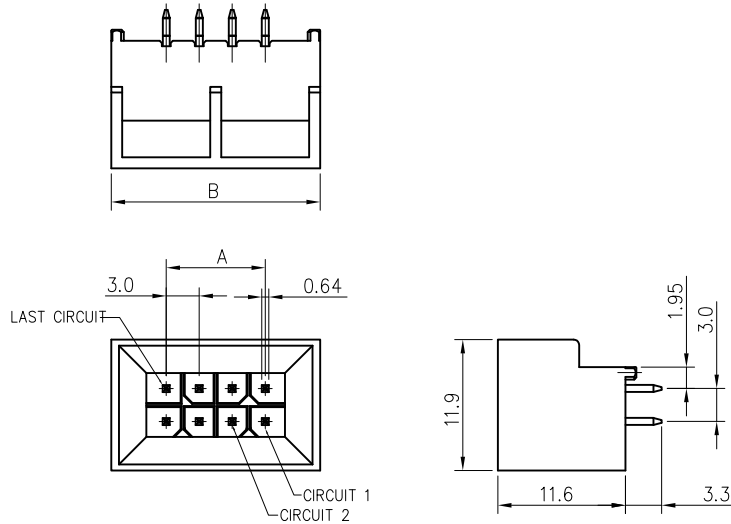
3001 Series

3.0mm[.118] pitch Wafer (Vertical-BMI Type)



Features:

- * Dual Row Vertical-BMI Type Wafer
- * Material : Insulator: Thermoplastic UL 94V-0 (Natural)
Contact Post: SQ 0.64mm Copper alloy, Tin or Gold Plated
- * Mates with CKM 3001 series socket
- * CKM P/N : 3001WV-2BxXP-XX-XX-HF



Dimensional & Ordering Information:

| POS | Dimensions | |
|-----|------------|------|
| | A | B |
| 04 | 3.0 | 13.0 |
| 06 | 6.0 | 16.0 |
| 08 | 9.0 | 19.0 |
| 10 | 12.0 | 22.0 |
| 12 | 15.0 | 25.0 |
| 14 | 18.0 | 28.0 |
| 16 | 21.0 | 31.0 |
| 18 | 24.0 | 34.0 |
| 20 | 27.0 | 37.0 |
| 22 | 30.0 | 40.0 |
| 24 | 33.0 | 43.0 |

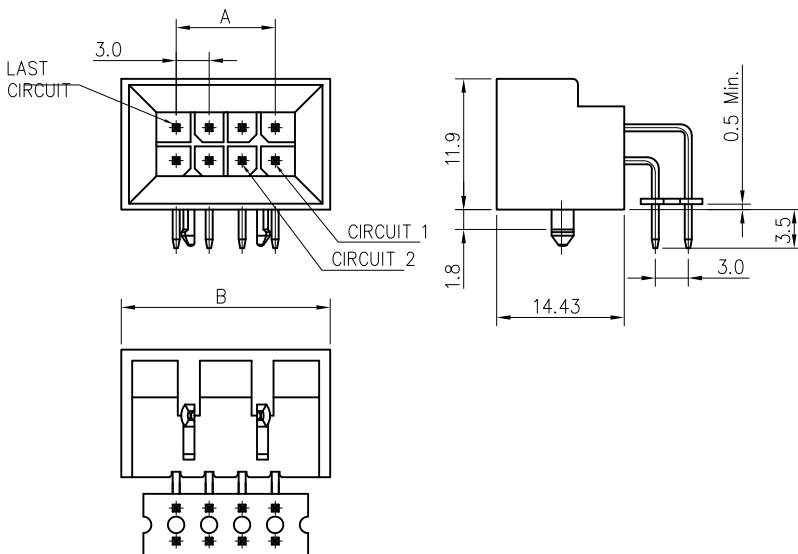
Note: * (eg. 0, A, B, X, Y, Z...) designates Au-plate thickness identification.
For availability, delivery and MOQ, Please contact CKM.

3001 Series

3.0mm[.118] pitch Wafer (Right Angle-BMI Type)

Features:

- * Doulr Row Right Angle-BMI Type Wafer
- * Material : Insulator: Thermoplastic UL 94V-0 (Natural)
Contact Post: SQ 0.64mm Copper alloy, Tin or Gold Plated
- * Mates with CKM 3001 series socket
- * CKM P/N : 3001WR-2BxXP-XX-XX-HF



Dimensional & Ordering Information:

| POS | Dimensions | |
|-----|------------|------|
| | A | B |
| 04 | 3.0 | 13.0 |
| 06 | 6.0 | 16.0 |
| 08 | 9.0 | 19.0 |
| 10 | 12.0 | 22.0 |
| 12 | 15.0 | 25.0 |
| 14 | 18.0 | 28.0 |
| 16 | 21.0 | 31.0 |
| 18 | 24.0 | 34.0 |
| 20 | 27.0 | 37.0 |
| 22 | 30.0 | 40.0 |
| 24 | 33.0 | 43.0 |

Note: * (eg. 0, A, B, X, Y, Z...) designates Au-plate thickness identification.
For availability, delivery and MOQ, Please contact CKM.