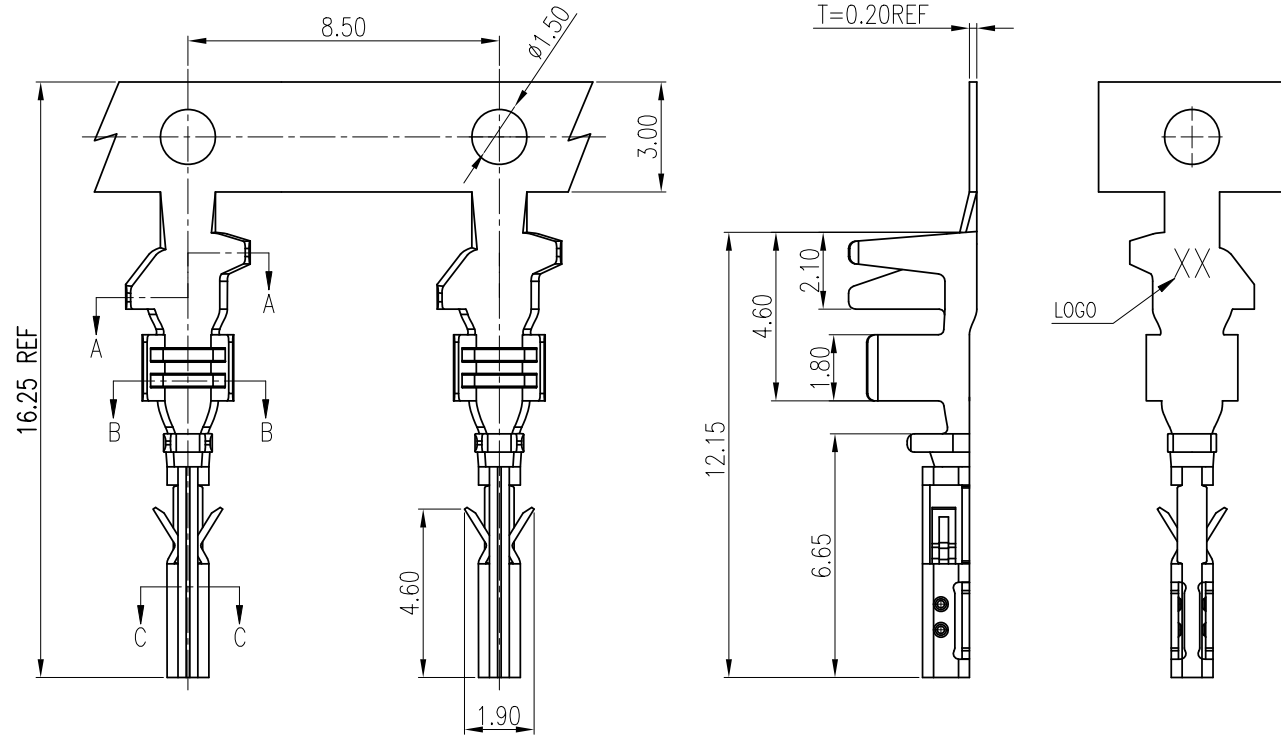


RoHS

CUST INFORMATION.

PART NO.	DRAWING NO.	REV.
----------	-------------	------

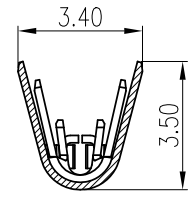


- NOTES:
- MATERIAL: 0.2mm THICK COPPER ALLOY
 - PLATING: BRIGHT TIN PLATED OVER NICKEL. OR SELECT GOLD IN CONTACT AREA, BRIGHT TIN ON CRIMP AREA, NICKEL OVERALL.
 - APPLICABLE WIRES: AWG #18~#16;
 - INSULATION O.D.: 1.85~2.1mm.
 - RoHS COMPLIANT.
 - BILL OF PART NO:

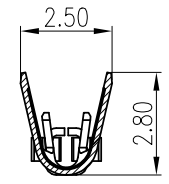
3010T3X-XX

MATERIAL: P=PHOSPHOR BRONZE(W/O LOGO) H=HIGH CONDUCTIVITY(HC LOGO) FINISH: B1=BRIGHT TIN PLATED OVER NICKEL. C=GOLD FLASH PLATED(CONTACT AREA) C4=15u" GOLD PLATED(CONTACT AREA) C7=30u" GOLD PLATED(CONTACT AREA)

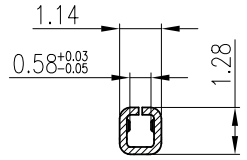
- TERMINAL Q'ty/REEL: 7,000PCS.
- FOR AVAILABILITY, DELIVERY & MOQ, CONTACT CKM



SECTION A-A



SECTION B-B



SECTION C-C



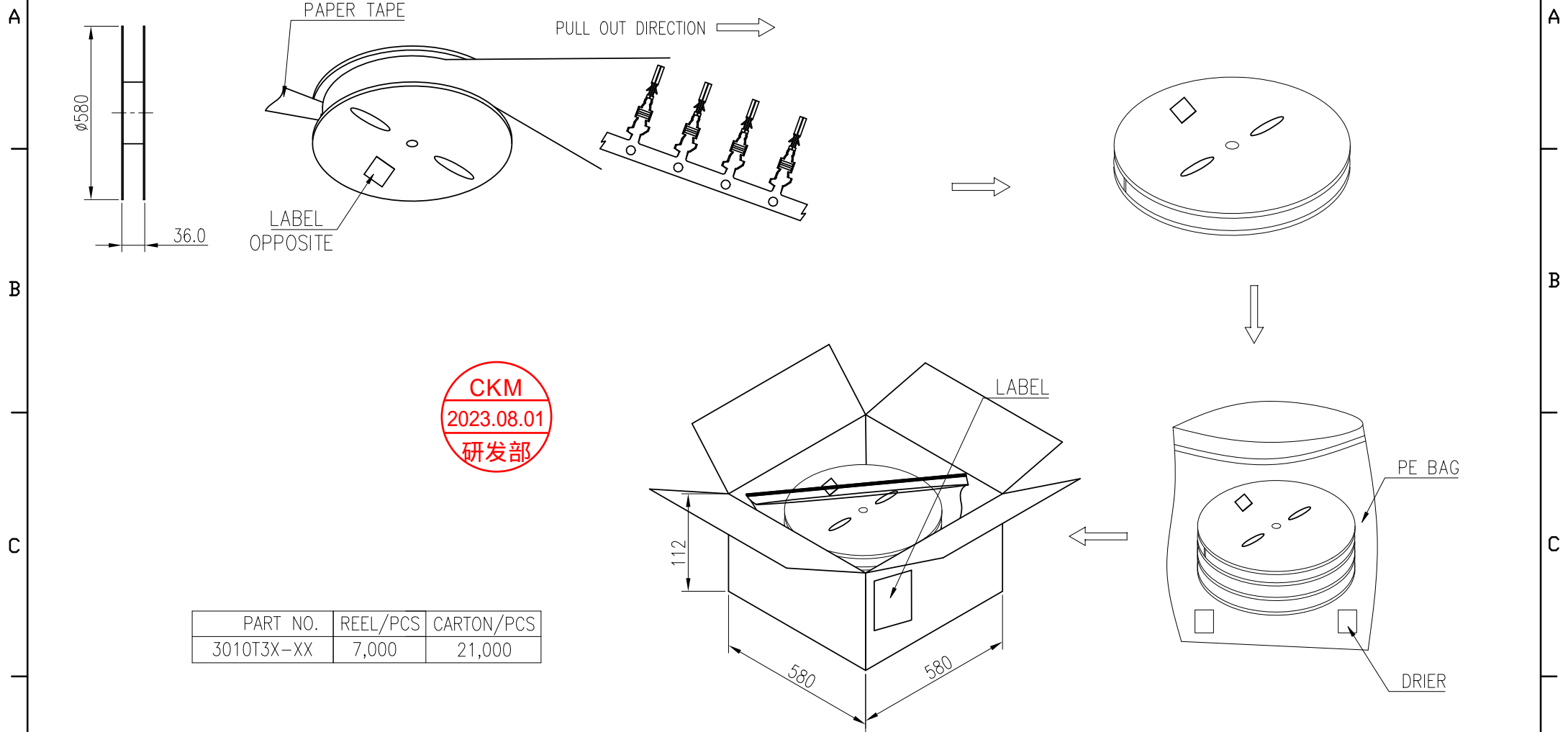
TOLERANCE X. ±0.50 X.XXX ±0.15 X.X ±0.35 X.XX ±0.25 Angular ±5°		PART NO. 3010T3X-XX		朝貴電子股份有限公司 CKM ELECTRONICS CO., LTD.	
UNIT: mm DWG TYPE. Customer Drawing		DRAWING NO. C-3010T3X-XX		TITLE. 3.0mm PITCH CRIMP TERMINAL	
APPROVED BY Angus.Chen 2023.08.01		CHECKED BY Sun.Lee 2023.08.01		DRAWN BY Rock 2023.08.01	
REV.		SCALE 5 : 1		PAGE 10F2 REV. A	

A		NEW RELEASE	Rock	2023.08.01
REV.	ECN NO	REVISION RECORD	DRAW	DATE

RoHS

CUST INFORMATION.

PART NO.	DRAWING NO.	REV.
----------	-------------	------



CKM
2023.08.01
研发部

PART NO.	REEL/PCS	CARTON/PCS
3010T3X-XX	7,000	21,000

TOLERANCE X. ±0.50 X.XXX ±0.15 X.X ±0.35 X.XX ±0.25 Angular ±5°		PART NO. 3010T3X-XX		朝貴電子股份有限公司 CKM ELECTRONICS CO., LTD.	
UNIT: mm DWG TYPE. Customer Drawing		DRAWING NO. C-3010T3X-XX		TITLE. 3.0mm PITCH CRIMP TERMINAL	
APPROVED BY Angus.Chen 2023.08.01		CHECKED BY Sun.Lee 2023.08.01		DRAWN BY Rock 2023.08.01	
		PAGE 20F2		REV. A	
		SCALE 5 : 1			

A		NEW RELEASE	Rock	2023.08.01
REV.	ECN NO	REVISION RECORD	DRAW	DATE