

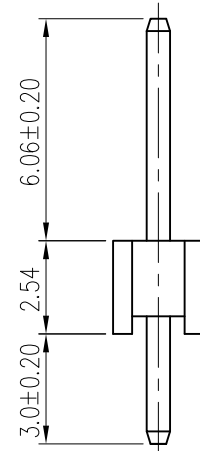
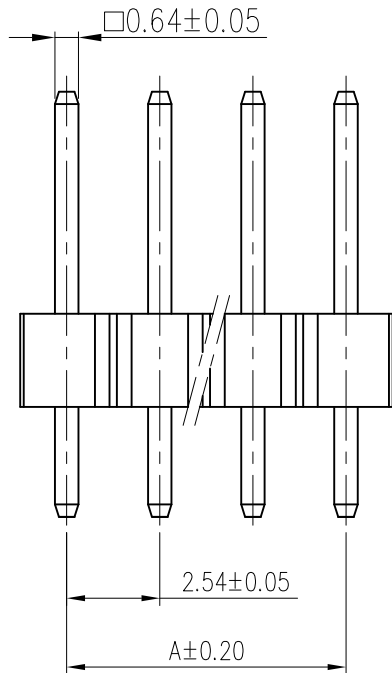
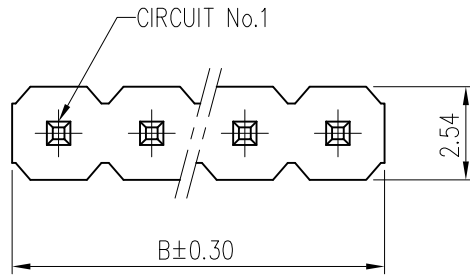
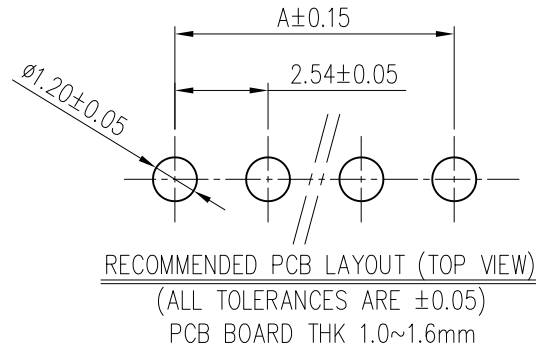
RoHS



NOTE:

- MATERIAL:
  - INSULATION: LCP, UL 94V-0 (BLACK)
  - CONTACT: SQ. 0.64mm BRASS
- FINISH: GOLD FLASH PLATED
- RoHS & HOLOGEN-FREE COMPLIANCE
- BILL OF PART NO.:
  - 2542WV-1ExXP-CA-LC-HF
- FOR AVAILABILITY, DELIVERY & MOQ, CONTACT CKM
- DIMENSION:

POS	A	B	POS	A	B
2	2.54	5.08	22	53.34	55.88
3	5.08	7.62	23	55.88	58.42
4	7.62	10.16	24	58.42	60.96
5	10.16	12.70	25	60.96	63.50
6	12.70	15.24	26	63.50	66.04
7	15.24	17.78	27	66.04	68.58
8	17.78	20.32	28	68.58	71.12
9	20.32	22.86	29	71.12	73.66
10	22.86	25.40	30	73.66	76.20
11	25.40	27.94	31	76.20	78.74
12	27.94	30.48	32	78.74	81.28
13	30.48	33.02	33	81.28	83.82
14	33.02	35.56	34	83.82	86.36
15	35.56	38.10	35	86.36	88.90
16	38.10	40.64	36	88.90	91.44
17	40.64	43.18	37	91.44	93.98
18	43.18	45.72	38	93.98	96.52
19	45.72	48.26	39	96.52	99.06
20	48.26	50.80	40	99.06	101.60
21	50.80	53.34			



TOLERANCE		PART NO.		朝貴電子股份有限公司	
X.	X.XXX ±0.10	2542WV-1ExXP-CA-LC-HF		CKM ELECTRONICS CO., LTD.	
X.X	±0.30	DRAWING NO.		DESCRIPTION	
X.XX	±0.20	C-2542WV-1ExXP-CA-LC-HF		2.54mm PITCH VERTICAL DIP TYPE CONNECTOR	
UNIT: mm		APPROVED BY	CHECKED BY	DRAWN BY	PAGE
DWG TYPE.		Angus Chen	Jimmy Wang	Jimmy Wang	1 OF 1
Customer Drawing		2018.10.11	2018.10.11	2018.10.11	SCALE
					4 : 1
					REV. A

A		NEW RELEASE	Jimmy	2018.10.11
REV.	ECN NO	REVISION RECORD	DRAW	DATE