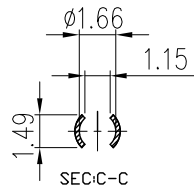
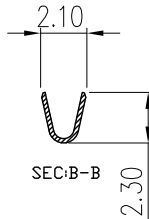
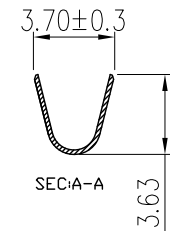
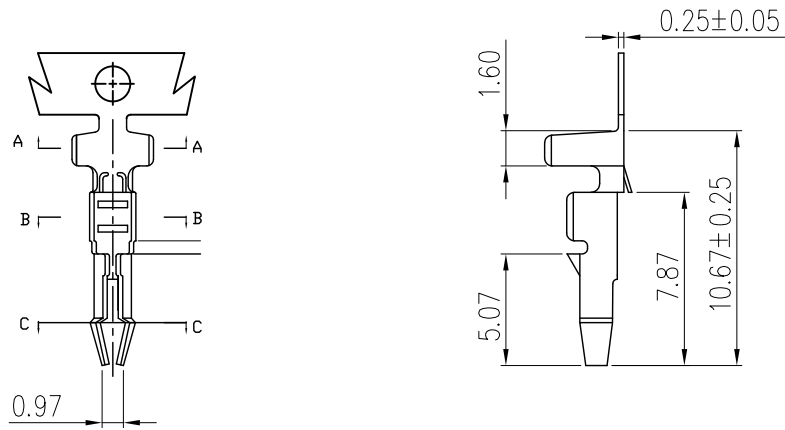



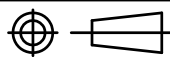
RoHS



NOTE:

1. Material: 0.25mm THICK PHOSPHOR BRONZE
2. Plated: Tin-plated.
3. Applicable wires: AWG#18~#22.
4. Insulation O.D.: 1.7~2.1
5. Bill of Part No:

PART NO	Material	FINISH
99050301	PHOSPHOR BRONZE	PRE-PLATED
99050302	99050301	POST-PLATED
99050303	99052303	POST-PLATED

TOLERANCE		PART NO.		 朝貴電子股份有限公司 CKM ELECTRONICS CO., LTD.	
X.	X.XXX ±0.10	990503XX			
X.X	±0.30	DRAWING NO.		DESCRIPTION	
X.XX	±0.20	C-990503XX			
 UNIT: mm		APPROVED BY	CHECKED BY	DRAWN BY	PAGE
					1 OF 1
DWG TYPE.					REV.
Customer Drawing					A1
				SCALE	
				3: 1	

A1		NEW RELEASE		2007.3.29
REV.	ECN NO	REVISION RECORD	DRAW	DATE