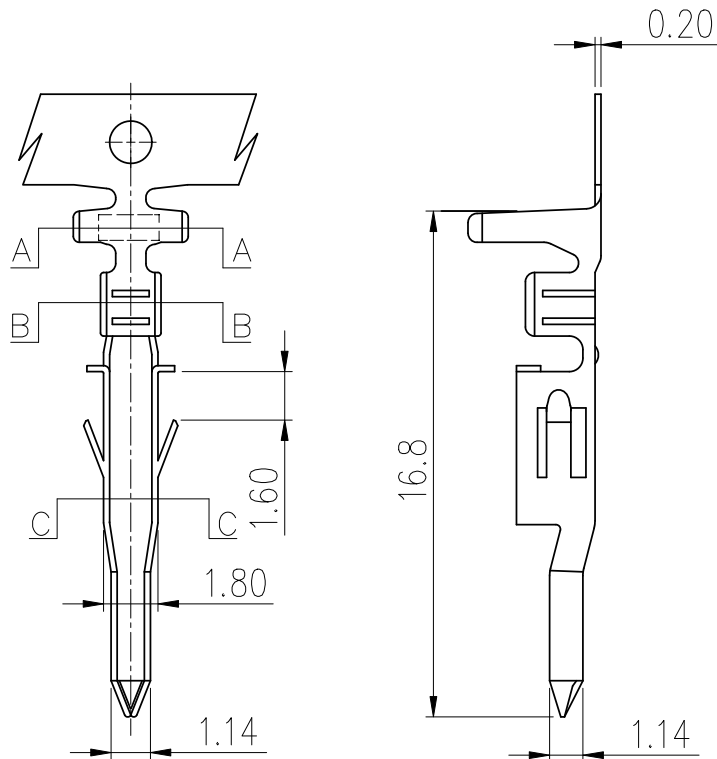


RoHS

CUST INFORMATION.

PART NO.	DRAWING NO.	REV.
----------	-------------	------



NOTE:

1. MATERIAL: COPPER ALLOY
2. RoHS COMPLIANCE
3. BILL OF PART NO.

CKM4203-TAX-X-X

STRUCTURE STATUS:
 LL=ULTRA-HIGH TAIL
 L=LARGE TAIL
 S=STANDARD TAIL

FINISH:

- 1=GOLD FLASH PLATING
- 2=TIN PLATING

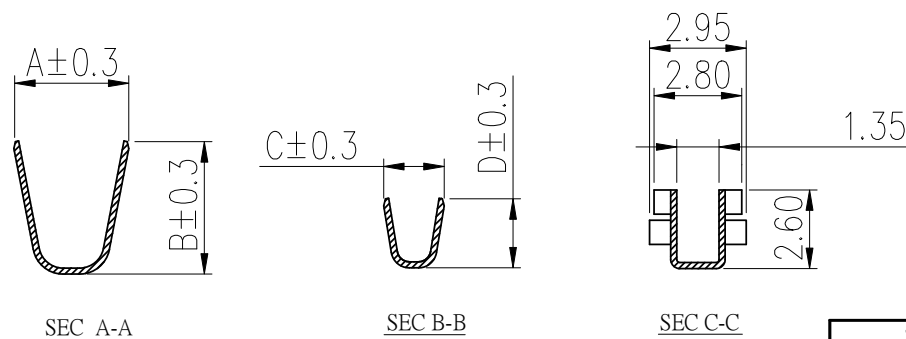
MATERIAL:

- BLANK=HIGT CONDUCTIVITY COPPER ALLOY
- 1=PHOSPHOR BRONZE
- 2=BRASS

4. DIMENSIONAL & ORDER INFORMATION:

PART NO.	A	B	C	D	APPLICABLE WIRES
CKM4203-TAS-X-X	3.2	3.4	1.8	2.2	#24~#28
CKM4203-TAL-X-X	3.7	4.5	1.8	2.7	#18~#22
CKM4203-TALL-X-X	3.6	4.5	3.0	2.82	#16

5. FOR CAVAILABILITY, DELIVERY & MOQ, CONTACT CKM



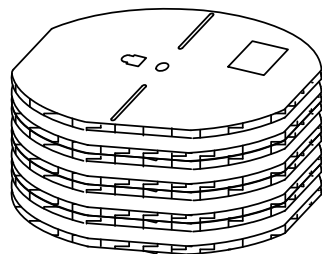
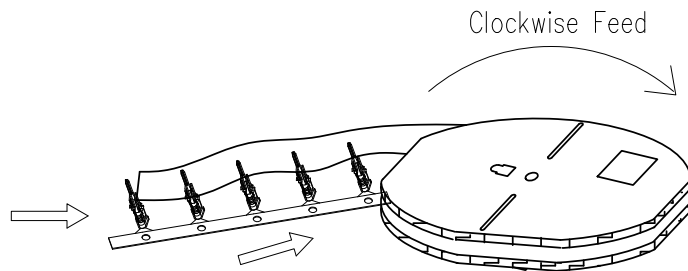
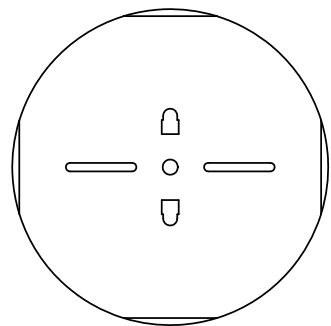
TOLERANCE		PART NO. CKM4203-TAX-X-X		朝貴電子股份有限公司 CKM ELECTRONICS CO., LTD.				
X. XXX ±0.10	X.X ±0.30	DRAWING NO. C-CKM4203-TAX-X-X				TITLE. 4.2mm PITCH CRIMP TERMINAL (MALE TYPE)		
X.XX ±0.20	Angular ±2°	UNIT: mm		APPROVED BY				
DWG TYPE. Customer Drawing		CHECKED BY		DRAWN BY		PAGE 1 OF 2		REV. B
						SCALE 4 : 1		

B		ADD TBLL SPEC	GuoXiang.Jiang	2018/07/18
A		NEW RELEASE	GuoXiang.Jiang	2017/11/24
REV.	ECN NO	REVISION RECORD	DRAW	DATE

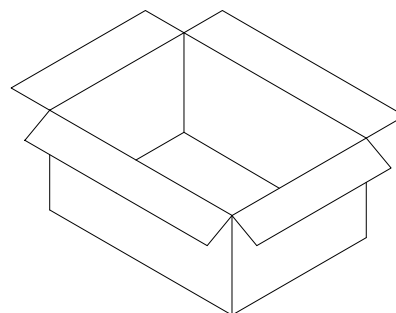
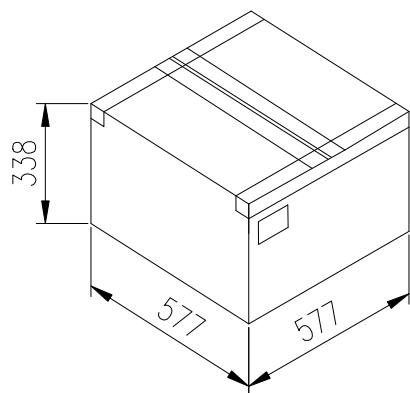
RoHS

CUST INFORMATION.

PART NO.	DRAWING NO.	REV.
----------	-------------	------



Stick by the label



TYPE	REEL	Carton	Weight	
	Pcs/Reel	Pcs/Carton	N/W(kg)	G/W(kg)
TAS	5000	45000	18.0	19.08
TAL	4000	36000	14.4	15.48
TALL	3000	27000	10.8	11.88

TOLERANCE		PART NO. CKM4203-TAX-X-X		朝貴電子股份有限公司 CKM ELECTRONICS CO., LTD.	
X. XXX ±0.10	X.X ±0.30	DRAWING NO. C-CKM4203-TAX-X-X		TITLE. 4.2mm PITCH CRIMP TERMINAL (MALE TYPE)	
X.XX ±0.20	Angular ±2°	UNIT: mm		APPROVED BY	
		CHECKED BY		DRAWN BY	
DWG TYPE. Customer Drawing		PAGE 2 OF 2		REV. B	
		SCALE 4 : 1			

B		ADD TBLL SPEC	GuoXiang.Jiang	2018/07/18
A		NEW RELEASE	GuoXiang.Jiang	2017/11/24
REV.	ECN NO	REVISION RECORD	DRAW	DATE