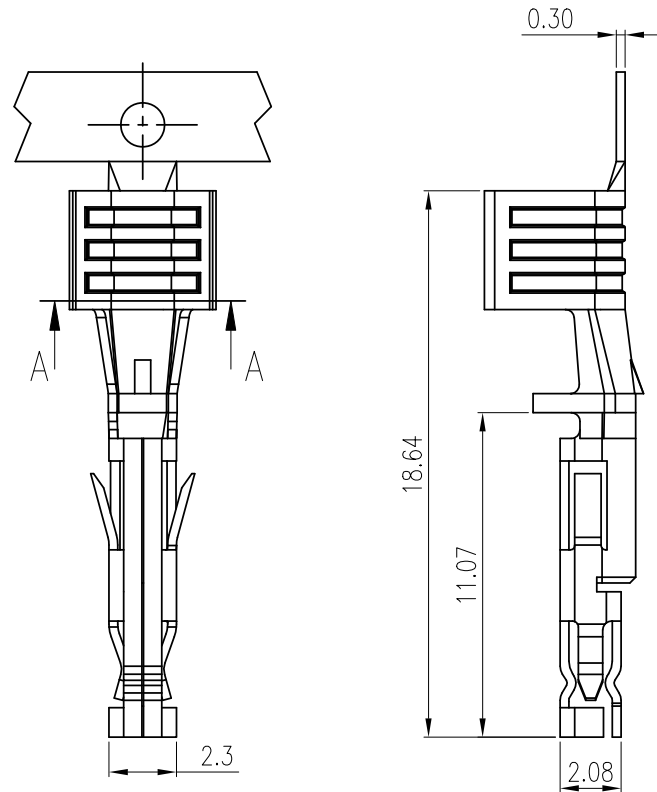


1 RoHS



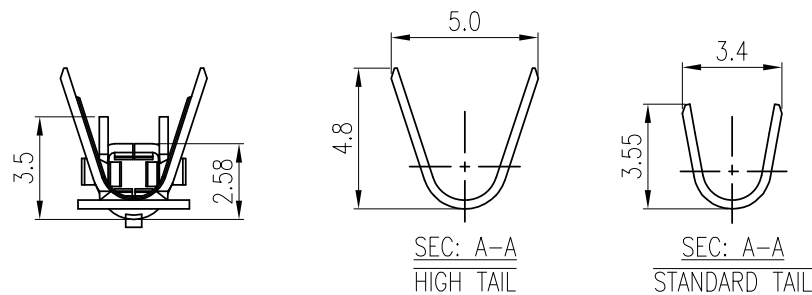
6 CUST INFORMATION.

PART NO. NA	DRAWING NO. NA	REV. NA
----------------	-------------------	------------



NOTE:

1. MATERIAL: HIGH CONDUCTIVITY COPPER ALLOY
2. FINISH: TIN OR GOLD* PLATING
*(SELECTIVE GOLD PLATED ON CONTACT AREA)
3. RoHS COMPLIANCE
4. BILL OF PART NO.: 5701TXH-XX
STRUCTURE STATUS: \leftarrow \rightarrow FINISH: B1=TIN PLATING
2=HIGH TAIL(#12) C =GOLD FLASH
0=STANDARD TAIL(#14~#16) C4=15u" GOLD PLATING
C7=30u" GOLD PLATING
5. APPLICABLE WIRES: AWG #12~#16
6. FOR AVAILABILITY, DELIVERY & MOQ, CONTACT CKM



TOLERANCE		PART NO.		朝貴電子股份有限公司	
X. XXX ±0.10	X.XXX ±0.10	5701TXH-XX		CKM ELECTRONICS CO., LTD.	
X.X ±0.30	Angular ±2°	DRAWING NO.		TITLE.	
X.XX ±0.20		C-5701TXH-XX		5.7mm PITCH CRIMP TERMINAL	
	UNIT:	APPROVED BY	CHECKED BY	DRAWN BY	PAGE
	mm	Angus.Chen	Sun.Lee	GuoXiang.Jiang	1 OF 2
DWG TYPE.		2019.04.16	2019.04.16	2019.04.16	SCALE
Customer Drawing					4 : 1
					REV.
					A

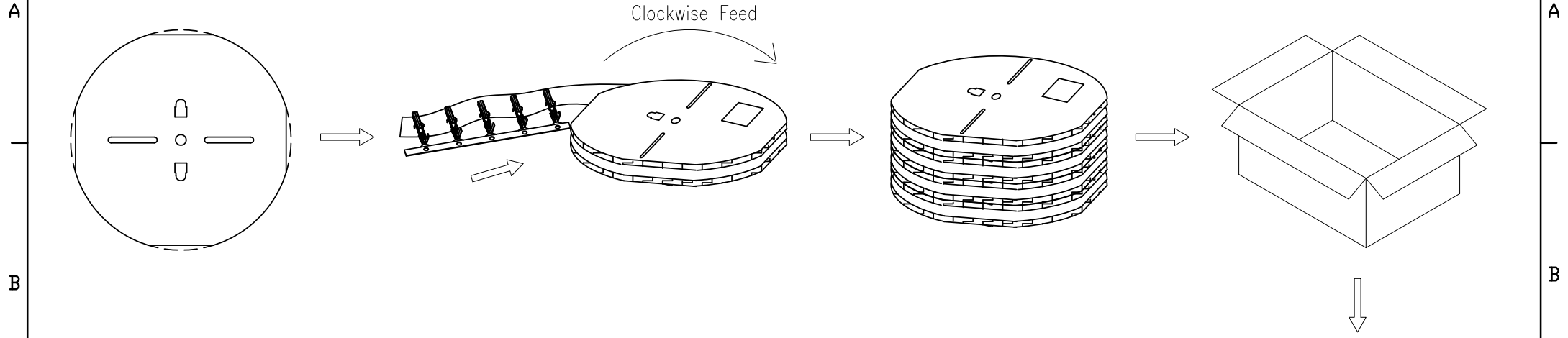
A		NEW RELEASE	GuoXiang.Jiang	2019.04.16
REV.	ECN NO	REVISION RECORD	DRAW	DATE

1 RoHS



6 CUST INFORMATION.

PART NO. NA	DRAWING NO. NA	REV. NA
----------------	-------------------	------------



PART NO.	REEL	Carton	Weight	
	Pcs/Reel	Pcs/Carton	N/W(kg)	G/W(kg)
5701T0X-B1	4000	12000	4.08	7.17
5701T2X-B1	3000	9000	3.60	6.43



Stick by the label



TOLERANCE		PART NO.		朝貴電子股份有限公司 CKM ELECTRONICS CO., LTD.	
X. XXX ±0.10	X.X ±0.30	5701TXH-XX		DRAWING NO.	
X.XX ±0.20	Angular ±2°	C-5701TXH-XX		C-5701TXH-XX	
		UNIT:		TITLE:	
mm		APPROVED BY		5.7mm PITCH CRIMP TERMINAL	
DWG TYPE.		Angus.Chen		DRAWN BY	
Customer Drawing		2019.04.16		GuoXiang.Jiang	
		CHECKED BY		PAGE	
		Sun.Lee		2 OF 2	
		2019.04.16		SCALE	
				N/A	
				REV.	
				A	

A		NEW RELEASE	GuoXiang.Jiang	2019.04.16
REV.	ECN NO	REVISION RECORD	DRAW	DATE