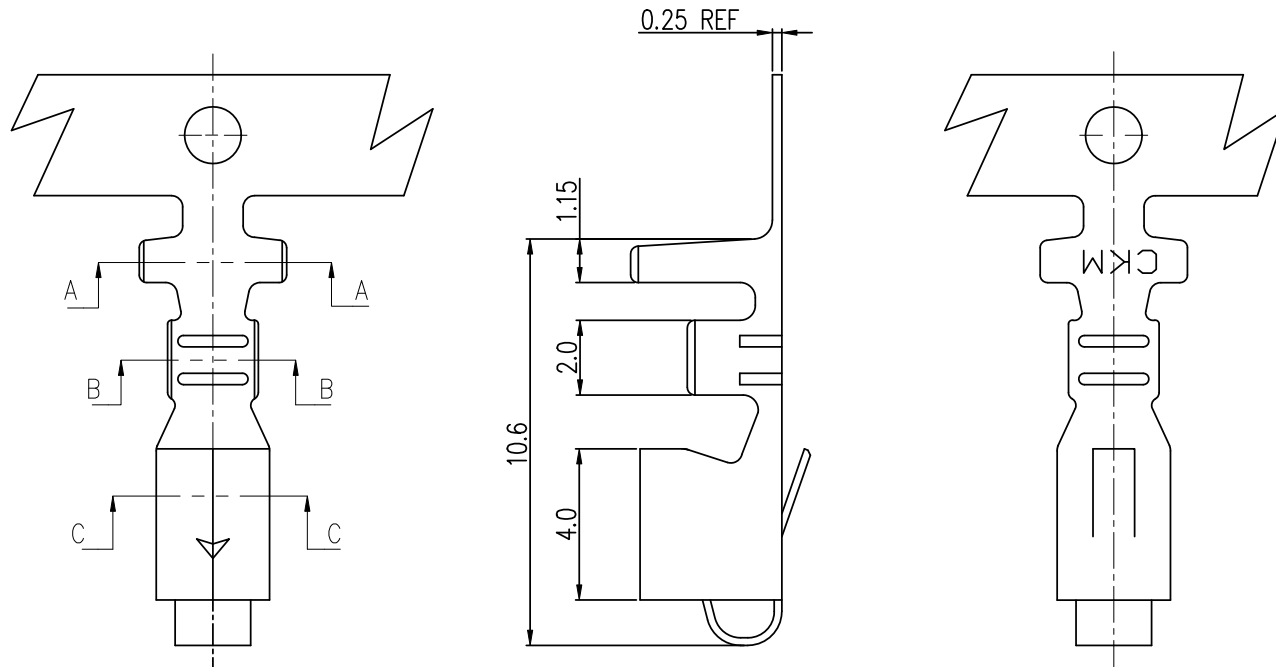


RoHS

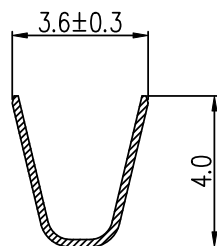
CUST INFORMATION.

PART NO. NA	DRAWING NO. NA	REV. NA
----------------	-------------------	------------

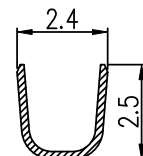


NOTE:

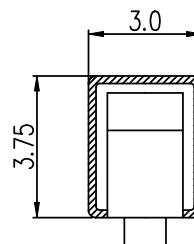
1. TERMINAL MATERIAL: THICK 0.25mm COPPER ALLOY
2. PLATED: TIN/GOLD PLATED
3. APPLICABLE WIRES: AWG#18-#22
4. INSULATION O.D.: 2.8mm MAX.
5. RoHS COMPLIANT.
6. BILL OF PART NO.



SEC A-A



SEC B-B



SEC C-C

3962TOX-X X

MATERIAL: B=BRASS

P=PHOSPHOR BRONZE

PLATING TYPE: 1=PRE-TIN PLATED  
2=POST-TIN PLATED

FINISH: B=BRIGHT TIN PLATED  
C=GOLD FLASH PLATED



TOLERANCE		PART NO. 3962TOX-XX		朝貴電子股份有限公司 CKM ELECTRONICS CO., LTD.	
X. X.X ±0.30 X.XX ±0.20	X.XXX ±0.10 Angular ±2°	DRAWING NO. 396203XX			
UNIT: mm		APPROVED BY Angus.Chen 2018.01.17	CHECKED BY Angus.Chen 2018.01.17	DRAWN BY GuoXiang.Jiang 2018.01.17	PAGE 1 OF 2
DWG TYPE. Customer Drawing				SCALE 4 : 1	REV. C

C		CHANGE THE PART NUMBER	GuoXiang	2018/01/17
B		CHANGE THE PART NUMBER	GuoXiang	2018/01/15
REV.	ECN NO	REVISION RECORD	DRAW	DATE

1 2 3 4 5 6

**RoHS**

**CUST INFORMATION.**

PART NO. NA	DRAWING NO. NA	REV. NA
----------------	-------------------	------------


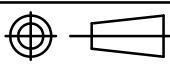


Stick by the label



Bag	Carton	Weight	
Pcs/Bag	Pcs/Carton	N/W(kg)	G/W(kg)
4000	40000	7.20	7.98

C		CHANGE THE PART NUMBER	GuoXiang	2018/01/17
B		CHANGE THE PART NUMBER	GuoXiang	2018/01/15
REV.	ECN NO	REVISION RECORD	DRAW	DATE

<b>TOLERANCE</b>		<b>PART NO.</b> 3962TOX-XX		 <b>朝貴電子股份有限公司</b> <b>CKM ELECTRONICS CO., LTD.</b>	
X. X.X ±0.30 X.XX ±0.20	X.XXX ±0.10 Angular ±2°	<b>DRAWING NO.</b> 396203XX		<b>TITLE.</b> CKM3.96-T	
 <b>UNIT:</b> mm		<b>APPROVED BY</b> Angus.Chen 2018.01.17	<b>CHECKED BY</b> Angus.Chen 2018.01.17	<b>DRAWN BY</b> GuoXiang.Jiang 2018.01.17	<b>PAGE</b> 2 OF 2 <b>SCALE</b> 4 : 1
<b>DWG TYPE.</b> <b>Customer Drawing</b>				<b>REV.</b> C	