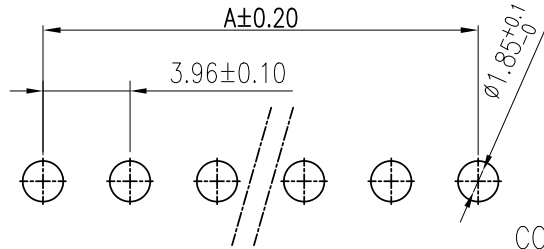
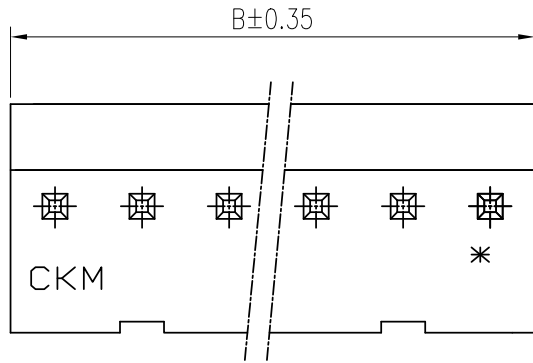


RoHS



A



RECOMMENDED PCB LAYOUT  
(PCB THK=1.0~1.6)  
TOLERANCES ARE NON-CUMULATIVE:±0.10

- MATERIAL SPECIFICATION:
  - INSULATION: NYLON 66 UL 94V-0/2
  - CONTACT: COPPER ALLOY SQ 1.14mm

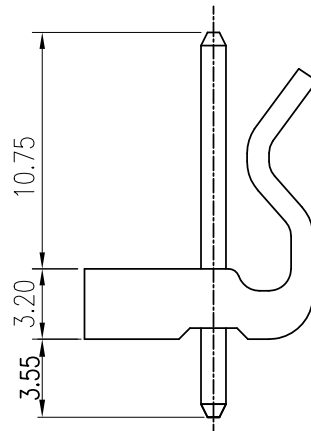
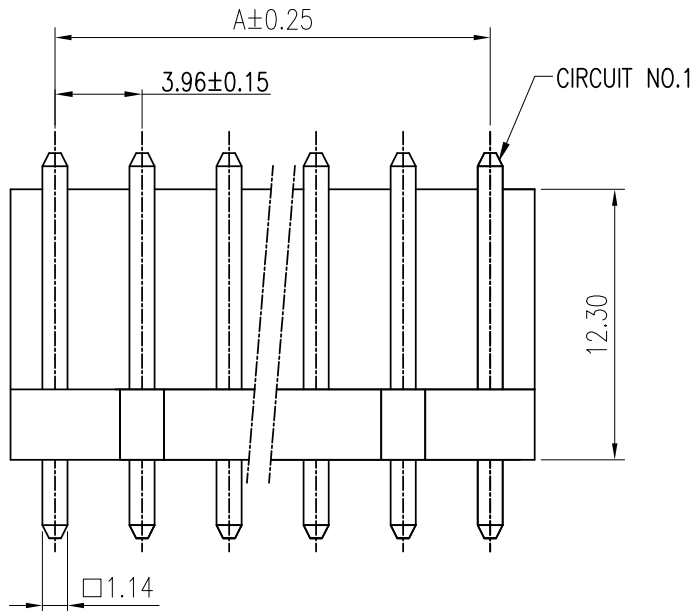
- FINISH: BRIGHT TIN PLATED
- BILL OF PART NO:

3961WV-XP-BX-XX-XXX-HF

NO. OF CIRCUITS →  
COLOR: BLANK=NATURAL A=BLACK  
VOID CIRCUIT: BLANK (STANDARD) OR 1~3 ALPHANUMERIC DIGITS  
INSULATION MATERIAL:  
BLANK=NYLON 66 UL 94V-2  
66=NYLON 66 UL 94V-0

- FOR COLOR, FINISH, VOID PIN, AVAILABILITY, DELIVERY AND MOQ, PLEASE CONTACT CKM.
- DIMENSIONAL & ORDERING INFORMATION

B



POS	A	B	POS	A	B
2	3.96	7.92	12	43.56	47.52
3	7.92	11.88	13	47.52	51.48
4	11.88	15.84	14	51.48	55.44
5	15.84	19.80	15	55.44	59.40
6	19.80	23.76	16	59.40	63.36
7	23.76	27.72	17	63.36	67.32
8	27.72	31.68	18	67.32	71.28
9	31.68	39.60	19	71.28	75.24
10	35.64	43.56	20	75.24	79.20
11	39.60	47.52			

C

D



<b>TOLERANCE</b> X. X.XXX ±0.10 X.X ±0.40 X.XX ±0.25 Angular ±2°		<b>PART NO.</b> 3961WV-XP-BX-XX-XXX-HF		朝貴電子股份有限公司 CKM ELECTRONICS CO., LTD.	
		<b>DRAWING NO.</b> 396102XX-XX		<b>DESCRIPTION</b> 3.96mm PITCH VERTICAL DIP TYPE CONNECTOR	
<b>UNIT:</b> mm		<b>APPROVED BY</b> Angus.Chen 2016.12.21		<b>CHECKED BY</b> Sun.Lee 2016.12.21	
<b>DWG TYPE.</b> Customer Drawing		<b>DRAWN BY</b> GuoXiang.Jiang 2016.12.21		<b>PAGE</b> 1 OF 2 <b>SCALE</b> 3 : 1	
				<b>REV.</b> B	

B		ADD PACKGE DRAWING	GuoXiang.Jiang	2016/12/21
A		NEW RELEASE	GuoXiang.Jiang	2016/03/31
REV.	ECN NO	REVISION RECORD	DRAW	DATE

1

2

3

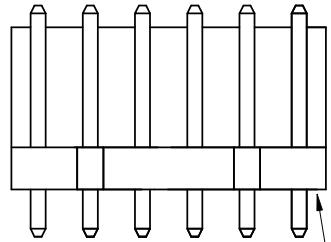
4

5

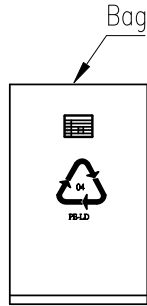
6

QMI-P12-05-01

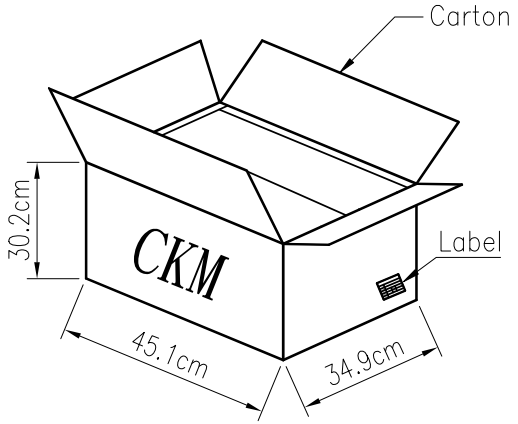
1 RoHS



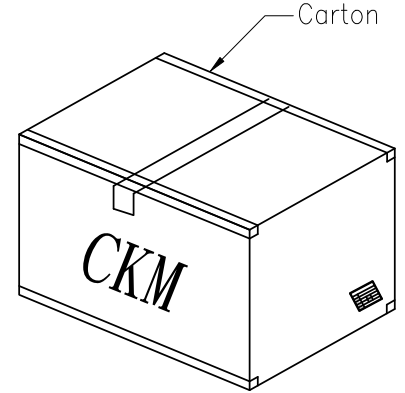
Products



Bag



Carton



Carton



Stick by the label

POS	Bag		Carton		Weight	
	Pcs/Bag	Pcs/Carton	N/W(kg)	G/W(kg)		
02	1000	35000	20.30	20.90		
03	1000	20000	17.60	18.20		
04	1000	15000	17.70	18.30		
05	1000	10000	14.50	15.10		
06	1000	10000	17.50	18.10		
07	1000	8000	16.40	17.00		
08	1000	7000	16.24	16.84		
09	1000	6000	15.78	16.38		
10	500	5000	14.65	15.25		
11	500	5000	15.95	16.55		
12	500	4000	14.00	14.60		
13	500	3500	13.34	13.94		
14	500	3000	12.03	12.63		
15	500	3000	12.63	13.23		
16	500	2000	8.82	9.42		
17	500	2000	9.22	9.82		
18	500	2000	9.62	10.22		
19	500	1500	7.52	8.12		
20	500	1500	7.82	8.42		



<b>TOLERANCE</b>		<b>PART NO.</b>		朝貴電子股份有限公司 CKM ELECTRONICS CO., LTD.	
X.                    X.XXX ±0.10		3961WV-XP-BX-XX-XXX-HF			
X.X ±0.40		<b>DRAWING NO.</b>		<b>DESCRIPTION</b>	
X.XX ±0.25	Angular ±2°	C-396102XX-XX		3.96mm PITCH VERTICAL DIP TYPE CONNECTOR	
		<b>UNIT:</b>		<b>APPROVED BY</b>	
		mm		Angus.Chen	
<b>DWG TYPE.</b>		<b>CHECKED BY</b>		<b>DRAWN BY</b>	
Customer Drawing		Sun.Lee		GuoXiang.Jiang	
		2016.12.21		2016.12.21	
				<b>PAGE</b>	
				2 OF 2	
				<b>SCALE</b>	
				3 : 1	
				<b>REV.</b>	
				B	

B		ADD PACKAGE DRAWING	GuoXiang.Jiang	2016/12/21
A		NEW RELEASE	GuoXiang.Jiang	2016.03.17
REV.	ECN NO	REVISION RECORD	DRAW	DATE