

RoHS

CUST INFORMATION.

PART NO.	DRAWING NO.	REV.
----------	-------------	------

NOTE:

1. MATERIAL: 0.20mm THICK COPPER ALLOY
2. PLATED: TIN OVER NICKEL PLATED
3. APPLICABLE WIRES:AWG#30-#24
4. INSULATION O.D.: MAX 1.60mm
5. RoHS COMPLIANT
6. BILL OF PART NO:



2008TOX-XXX

INSERTION FORCE TYPE: BLANK=STANDARD(DIM F=0.25mm)
L=LOW FORCE(DIM F=0.35mm)

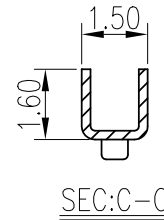
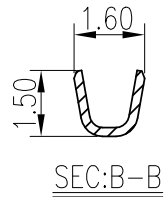
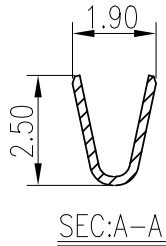
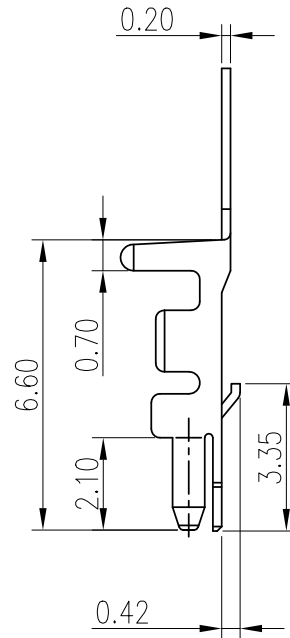
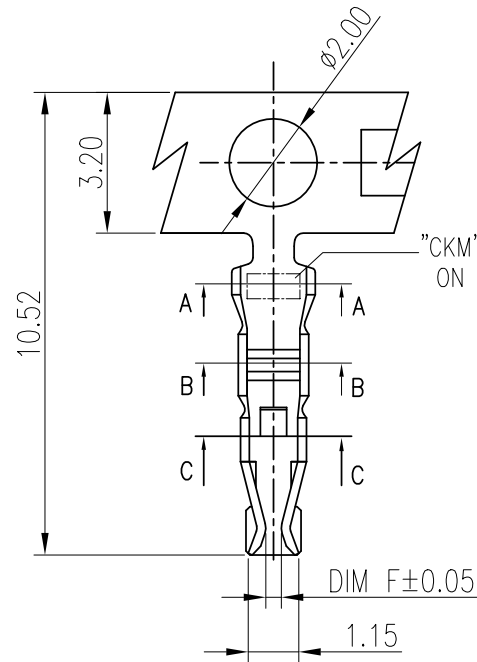
FINISH:B1=PRE-BRIGHT TIN PLATED
B2=POST-BRIGHT TIN PLATED

$\triangle D$ C=G/F ON CONTACT AREA

$\triangle E$ A2=POST-MATTE TIN PLATED

MATERIAL: B=BRASS
P=PHOSPHOR BRONZE

7. Q'ty / REEL: 10,000 pcs
8. FOR AVAILABILITY, DELIVERY & MOQ, CONTACT CKM



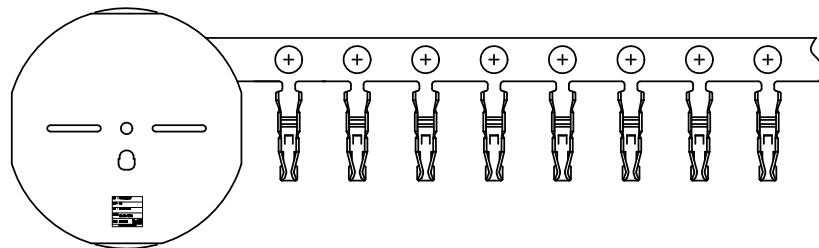
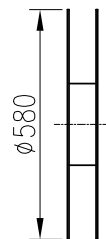
TOLERANCE		PART NO.		朝貴電子股份有限公司 CKM ELECTRONICS CO., LTD.	
X. X.XXX ±0.10		2008TOP-XXX			
X.X ±0.30		DRAWING NO.		TITLE.	
X.XX ±0.20	Angular ±2°	C-2008TOP-XXX		2.0mm PITCH CRIMP TERMINAL	
		UNIT:		APPROVED BY	
		mm		Ivan.Su	
DWG TYPE.		CHECKED BY		DRAWN BY	
Customer Drawing		Sun.Lee		Heimer	
		2021.06.07		2021.06.07	
		PAGE		REV.	
		1 OF 2		E	
		SCALE			
		6 : 1			

E	EC-21060917	ADD MATTE TIN SPEC.	HEIMER	2021.6.7
D	EC-21010827	ADD G/F SPECIFICATION	HEIMER	2021.1.27
C		CHANGE GAP	LZQ	2018.09.19
REV.	ECN NO	REVISION RECORD	DRAW	DATE

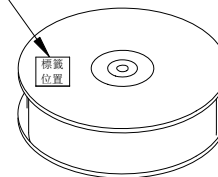
RoHS

CUST INFORMATION.

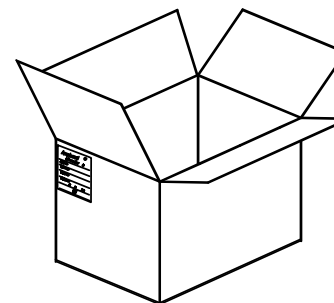
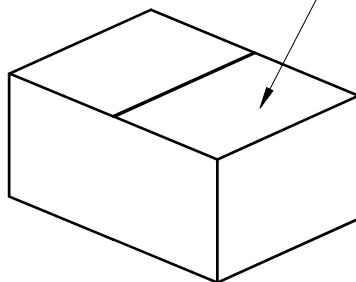
PART NO.	DRAWING NO.	REV.
----------	-------------	------



LABEL 1=Q'TY : XX PCS



LABEL 2=Q'TY : XXXX PCS



POS	PAPER PLATE SIZE	LABEL 1 Q'TY
1	42-001(∅580)	10000 PCS

CARTON SIZE (L*W*H)	LABEL 2 Q'TY	NET WEIGHT	GROSS WEIGHT
40-674(57.7*57.7*11.2cm)	40000 PCS	2.52KG	4.52KG

TOLERANCE X. X.XXX ±0.10 X.X ±0.30 X.XX ±0.20 Angular ±2°		PART NO. 2008TOP-XXX		朝貴電子股份有限公司 CKM ELECTRONICS CO., LTD.	
		DRAWING NO. C-2008TOP-XXX		TITLE: 2.0mm PITCH CRIMP TERMINAL	
DWG TYPE. Customer Drawing		APPROVED BY Ivan.Su 2021.06.07	CHECKED BY Sun.Lee 2021.06.07	DRAWN BY Heimer 2021.06.07	PAGE 20F2 SCALE 1:1
				REV. E	

E	EC-21060917	ADD MATTE TIN SPEC.	HEIMER	2021.6.7
D	EC-21010827	ADD G/F SPECIFICATION	HEIMER	2021.1.27
C		CHANGE GAP	LZQ	2018.09.19
REV.	ECN NO	REVISION RECORD	DRAW	DATE