

### Specifications:

Circuit	2~16 Poles
Pitch between poles	2.00mm
Rated Voltage	250V AC
Rated Current	3A (AWG #22)
Withstand Voltage	800V AC/minute
Contact Resistance	10mΩ Max.
Insulation Resistance	1000MΩ Min.
Temperature Range	-40°~+105°C
Applicable Wire Range	AWG #28~#22

UL: Recognized No. E186634

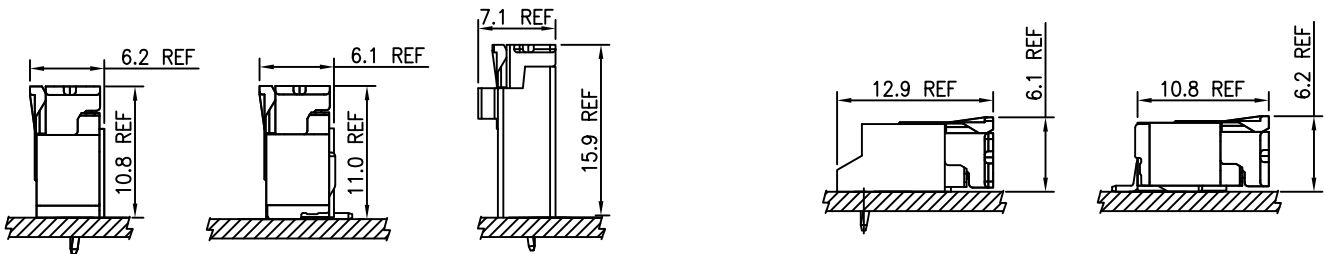
RoHS-Specification

Halogen-free products

### Assembly Layout

Vertical Type

Right Angle Type



### Ordering Code

① ② ③ ④ ⑤  
**2015 H -XP -X -HF**

- ① Series No.
- ② Housing
- ③ No. of circuits: 2~16
- ④ Color Code: Blank(Natural) or X(Other)
- ⑤ HF: Halogen Free

① ② ③④ ⑤  
**2008 T -XP -XX**

- ① Series No.
- ② Terminal
- ③ Crimp Type: 0=Standard Type  
2=High grip Type
- ④ Material: Phosphor bronze
- ⑤ Plated Code: B1=Pre-Tin Plated  
B2=Post-Tin Plated

① ②③④ ⑤ ⑥⑦ ⑧  
**2015 WXX -XP -XX -HF**

- ① Series No.
- ② Wafer
- ③ Entry Type: V=Vertical, R=Right angle
- ④ Solder Type: Blank=DIP Type  
S=SMT Type  
H=High Box Type
- ⑤ No. of circuits: 2~16
- ⑥ Plating code: A=Matte Tin  
B=Bright Tin  
C=Gold
- ⑦ Color Code: Blank(Natural) or A(Black)
- ⑧ HF: Halogen Free

Note: \* (eg. A, B, X...) designates Plated thickness identification.  
For availability, delivery, color and MOQ, contact CKM.

# 2015 Series

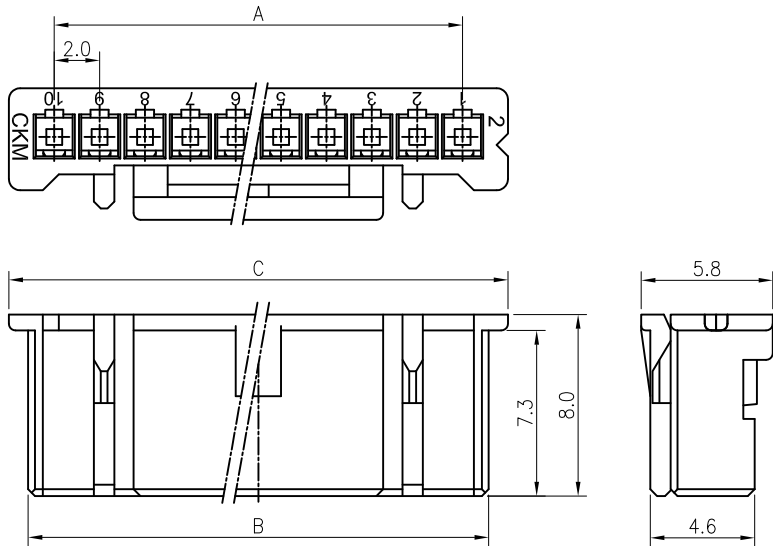
2.00mm[.079] pitch Crimp Terminal Socket



### Features:

- \* Single Row Terminal Socket
- \* Material : Nylon 66 UL 94V-0 (Natural)
- \* Suitable for CKM 2015 series terminal
- \* CKM P/N : 2015H-XP-X-HF

### Dimensional & Ordering Information:



POS	Dimensions		
	A	B	C
2	2.0	4.3	6.0
3	4.0	6.3	8.0
4	6.0	8.3	10.0
5	8.0	10.3	12.0
6	10.0	12.3	14.0
7	12.0	14.3	16.0
8	14.0	16.3	18.0
9	16.0	18.3	20.0
10	18.0	20.3	22.0
11	20.0	22.3	24.0
12	22.0	24.3	26.0
13	24.0	26.3	28.0
14	26.0	28.3	30.0
15	28.0	30.3	32.0
16	30.0	32.3	34.0

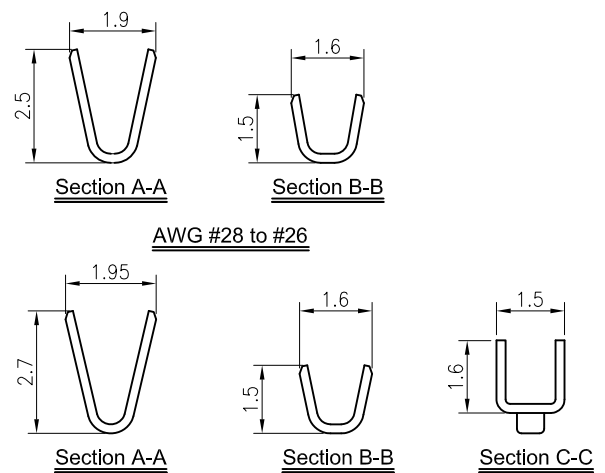
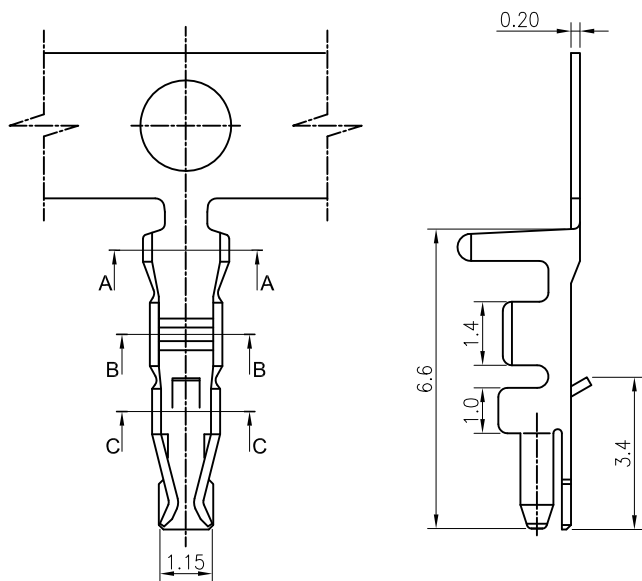
Note: X (eg. A, XX...) Designates Color, Material, Identification.  
For availability, delivery and MOQ, Please contact CKM.

# 2015 Series

2.00mm[.079] pitch Crimp Terminal

### Features:

- \* Used in CKM 2015 series socket
- \* Material : 0.20mm thick Copper alloy, Tin or Gold-plated
- \* CKM P/N : 2008TXP-XX



### Dimensional & Ordering Information:

Part No.	2008TXP-BX	2008TXP-CX
Wire Range	AWG #28-#22	
Insulation O.D.	1.6mm Max.	
Material	Phosphor bronze	
Finish	Tin-Plated	Gold-Plated

Note: \* (eg. 0, A, B...) designates Au-plate thickness identification.  
For availability, delivery and MOQ, Please contact CKM.

# 2015 Series

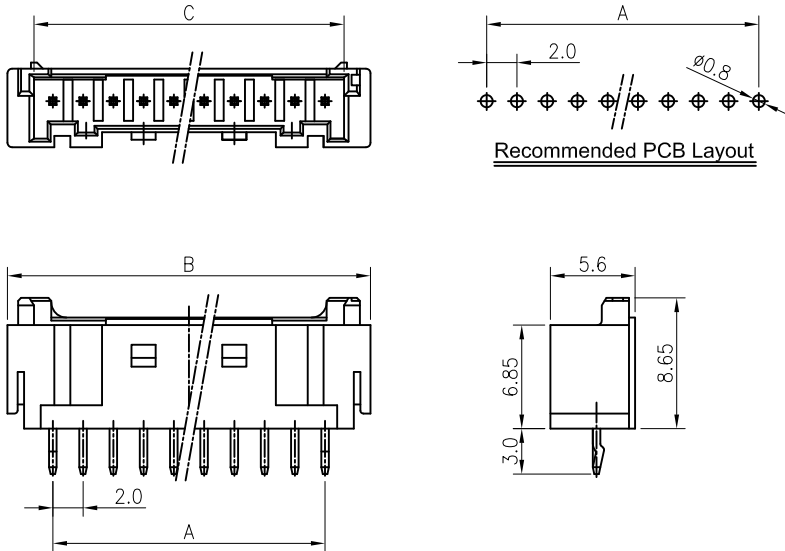
2.00mm[.079] pitch wafer (Vertical-DIP Type)



**Features:**

- \* Single Row Vertical-DIP Type Wafer
- \* Material : Insulator: Nylon 6T UL 94V-0 (Natural)  
Contact Post: SQ. 0.50mm Brass, Tin/Gold-plated
- \* Mates with CKM 2015 Series socket
- \* CKM P/N : 2015WV-XP-XX-HF

**Dimensional & Ordering Information:**



POS	Dimensions		
	A	B	C
2	2.0	8.0	4.5
3	4.0	10.0	6.5
4	6.0	12.0	8.5
5	8.0	14.0	10.5
6	10.0	16.0	12.5
7	12.0	18.0	14.5
8	14.0	20.0	16.5
9	16.0	22.0	18.5
10	18.0	24.0	20.5
11	20.0	26.0	22.5
12	22.0	28.0	24.5
13	24.0	30.0	26.5
14	26.0	32.0	28.5
15	28.0	34.0	30.5
16	30.0	36.0	32.5

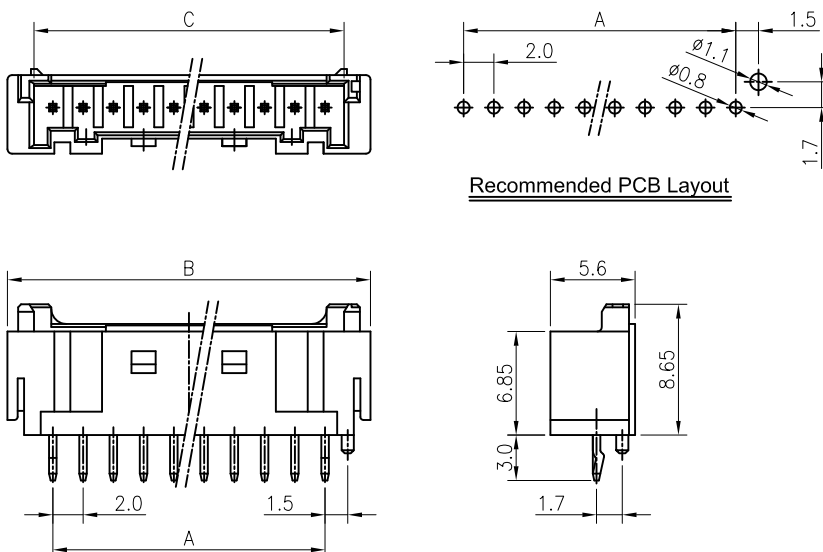
# 2015 Series

2.00mm[.079] pitch wafer (Vertical-DIP Type)

**Features:**

- \* Single Row Vertical-DIP Type Wafer (With Boss)
- \* Material : Insulator: Nylon 6T UL 94V-0 (Natural)  
Contact Post: SQ. 0.50mm Brass, Tin/Gold-plated
- \* Mates with CKM 2015 Series socket
- \* CKM P/N : 2015WVBS-XP-XX-HF

**Dimensional & Ordering Information:**



POS	Dimensions		
	A	B	C
2	2.0	8.0	
3	4.0	10.0	
4	6.0	12.0	
5	8.0	14.0	7.0
6	10.0	16.0	7.0
7	12.0	18.0	7.0
8	14.0	20.0	7.0
9	16.0	22.0	7.0
10	18.0	24.0	13.6
11	20.0	26.0	13.6
12	22.0	28.0	13.6
13	24.0	30.0	13.6
14	26.0	32.0	13.6
15	28.0	34.0	13.6
16	30.0	36.0	13.6

# 2015 Series

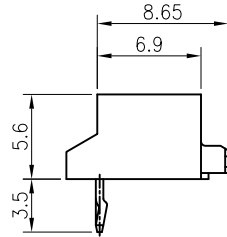
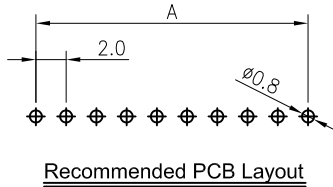
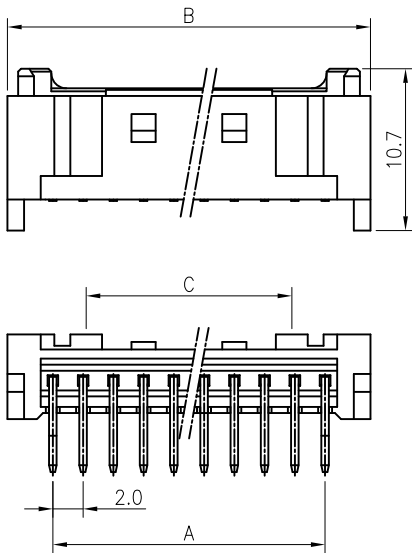
2.00mm[.079] pitch wafer (Right Angle-DIP Type)



**Features:**

- \* Single Row Right Angle-DIP Type Wafer
- \* Material : Insulator: Nylon 6T UL 94V-0 (Natural)  
Contact Post: SQ. 0.50mm Brass, Tin/Gold-plated
- \* Mates with CKM 2015 Series socket
- \* CKM P/N : 2015WR-XP-XX-HF

**Dimensional & Ordering Information:**



POS	Dimensions		
	A	B	C
2	2.0	8.0	
3	4.0	10.0	
4	6.0	12.0	
5	8.0	14.0	7.0
6	10.0	16.0	7.0
7	12.0	18.0	7.0
8	14.0	20.0	7.0
9	16.0	22.0	7.0
10	18.0	24.0	13.6
11	20.0	26.0	13.6
12	22.0	28.0	13.6
13	24.0	30.0	13.6
14	26.0	32.0	13.6
15	28.0	34.0	13.6
16	30.0	36.0	13.6

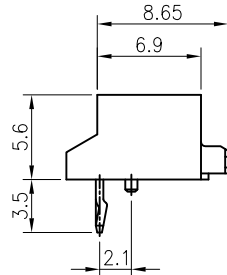
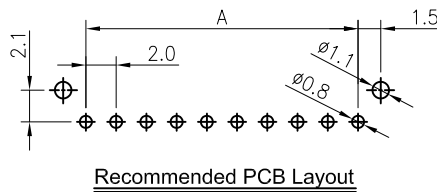
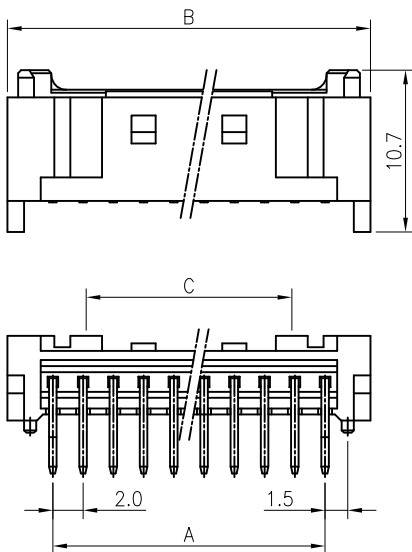
# 2015 Series

2.00mm[.079] pitch wafer (Right Angle-DIP Type)

**Features:**

- \* Single Row Right Angle-DIP Type Wafer (With Boss)
- \* Material : Insulator: Nylon 6T UL 94V-0 (Natural)  
Contact Post: SQ. 0.50mm Brass, Tin/Gold-plated
- \* Mates with CKM 2015 Series socket
- \* CKM P/N : 2015WRBS-XP-XX-HF

**Dimensional & Ordering Information:**



POS	Dimensions		
	A	B	C
2	2.0	8.0	
3	4.0	10.0	
4	6.0	12.0	
5	8.0	14.0	7.0
6	10.0	16.0	7.0
7	12.0	18.0	7.0
8	14.0	20.0	7.0
9	16.0	22.0	7.0
10	18.0	24.0	13.6
11	20.0	26.0	13.6
12	22.0	28.0	13.6
13	24.0	30.0	13.6
14	26.0	32.0	13.6
15	28.0	34.0	13.6
16	30.0	36.0	13.6

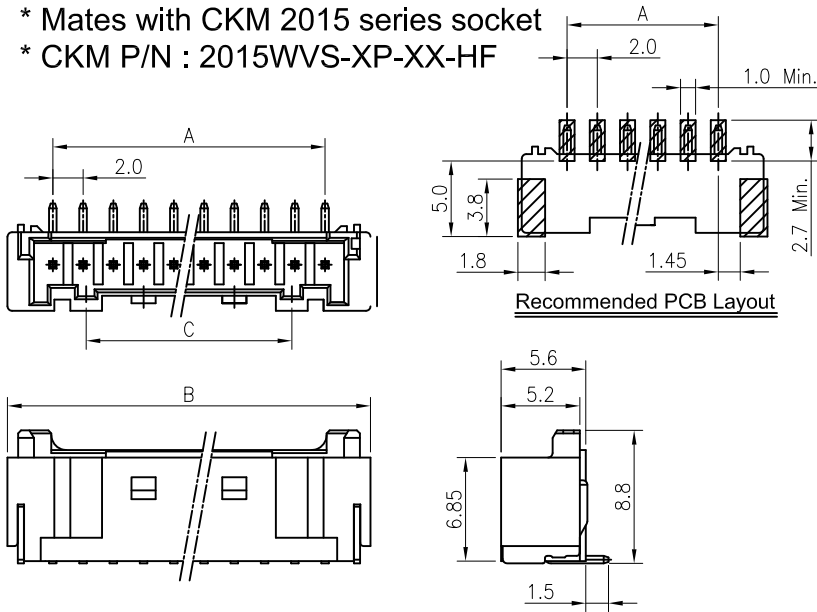
# 2015 Series

2.00mm[.079] pitch wafer (Vertical-SMT Type)



**Features:**

- \* Single Row Vertical-SMT Type Wafer
- \* Material : Insulator: Nylon 6T UL 94V-0 (Natural)  
Contact Post: SQ. 0.50mm Brass, Tin/Gold-plated  
Solder Tab: 0.40mm Copper alloy, Tin-plated
- \* Mates with CKM 2015 series socket
- \* CKM P/N : 2015WVS-XP-XX-HF



**Dimensional & Ordering Information:**

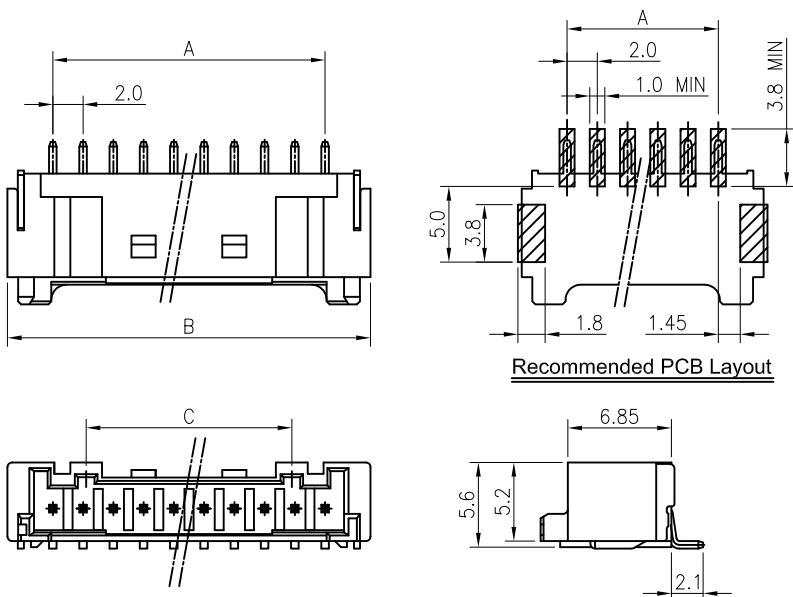
POS	Dimensions		
	A	B	C
2	2.0	8.0	
3	4.0	10.0	
4	6.0	12.0	
5	8.0	14.0	7.0
6	10.0	16.0	7.0
7	12.0	18.0	7.0
8	14.0	20.0	7.0
9	16.0	22.0	7.0
10	18.0	24.0	13.6
11	20.0	26.0	13.6
12	22.0	28.0	13.6
13	24.0	30.0	13.6
14	26.0	32.0	13.6
15	28.0	34.0	13.6
16	30.0	36.0	13.6

# 2015 Series

2.00mm[.079] pitch wafer (Right Angle-SMT Type)

**Features:**

- \* Single Row Right Angle-SMT Type Wafer
- \* Material : Insulator: Nylon 6T UL 94V-0 (Natural)  
Contact Post: SQ. 0.50mm Brass, Tin/Gold-plated  
Solder Tab: 0.40mm thick Copper alloy, Tin-plated
- \* Mates with CKM 2015 series socket
- \* CKM P/N : 2015WRS-XP-XX-HF



**Dimensional & Ordering Information:**

POS	Dimensions		
	A	B	C
2	2.0	8.0	
3	4.0	10.0	
4	6.0	12.0	
5	8.0	14.0	7.0
6	10.0	16.0	7.0
7	12.0	18.0	7.0
8	14.0	20.0	7.0
9	16.0	22.0	7.0
10	18.0	24.0	13.6
11	20.0	26.0	13.6
12	22.0	28.0	13.6
13	24.0	30.0	13.6
14	26.0	32.0	13.6
15	28.0	34.0	13.6
16	30.0	36.0	13.6

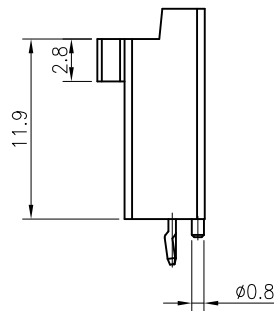
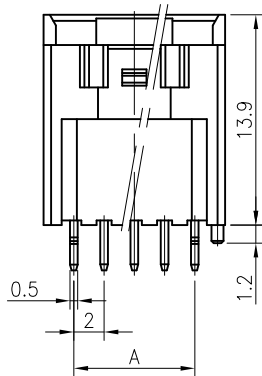
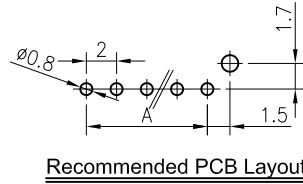
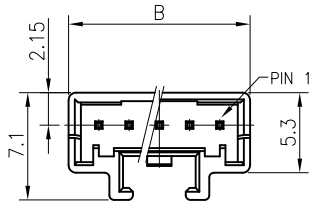
# 2015 Series

2.00mm[.079] pitch wafer (Vertical-DIP Type)



## Features:

- \* Single Row Vertical-DIP Type Wafer
- \* Material : Insulator: Nylon 66 UL 94V-0 (Natural)  
Contact Post: SQ. 0.50mm Brass, Tin plated
- \* Mates with CKM 2015 Series socket
- \* CKM P/N : 2015WVH-XP-XX-HF



## Dimensional & Ordering Information:

POS	Dimensions	
	A	B
2		6.0
3	4.00	8.0
4	6.00	10.0
5	8.00	12.0
6	10.00	14.0
7	12.00	16.0
8	14.00	18.0
9	16.00	20.0
10	18.00	22.0
11	20.00	24.0
12	22.00	26.0
15	28.00	32.0