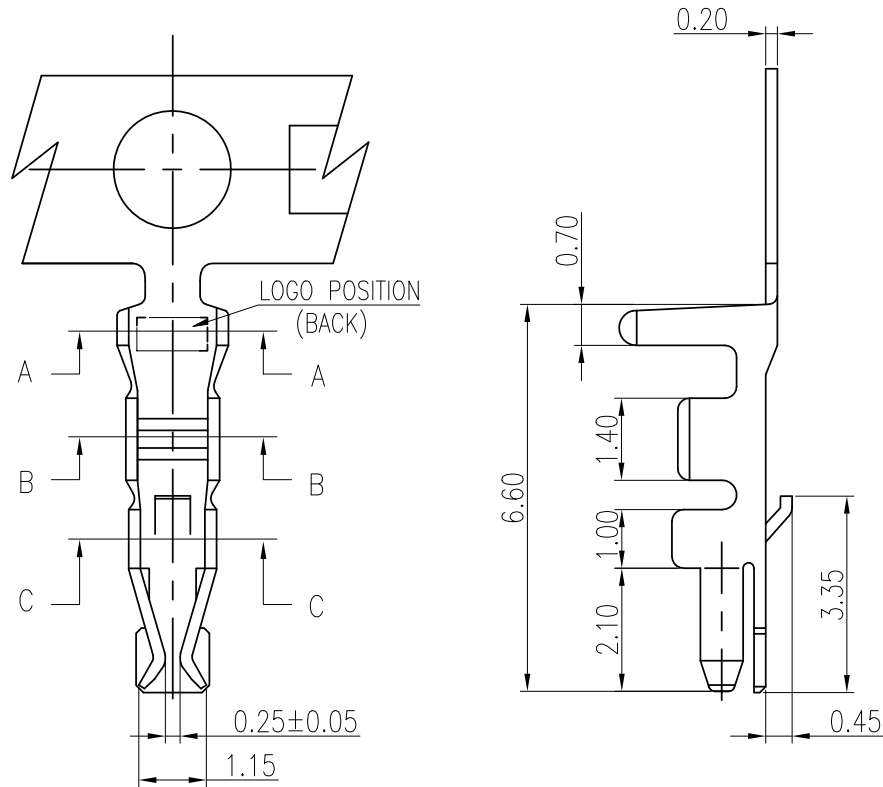


RoHS

HF

CUST INFORMATION.

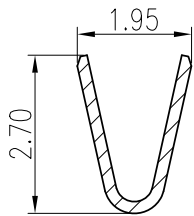
PART NO. NA	DRAWING NO. NA	REV. NA
----------------	-------------------	------------



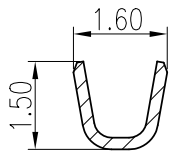
NOTE

1. MATERIAL: THICK 0.20mm PHOSPHOR BRONZE
2. FINISH: TIN PLATING
3. RoHS COMPLIANCE
4. APPLICABLE WIRES:AWG#28-#22
5. INSULATION O.D.: MAX ϕ 1.50mm
6. BILL OF PART NO:
2008T2P-XX-XX

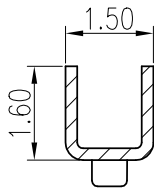
FINISH: B1=PRE-BRIGHT TIN PLATED NS=W/O CKM LOGO
 B2=POST-BRIGHT TIN PLATED (PRODUCT & CARTON)
 C=GOLD FLASH ON CONTACT AREA



SEC:A-A



SEC:B-B



SEC:C-C

TOLERANCE		PART NO.		朝貴電子股份有限公司 CKM ELECTRONICS CO., LTD.	
X. X.XXX ±0.10		2008T2P-XX-XX			
X.X ±0.30		DRAWING NO.		TITLE.	
X.XX ±0.20	Angular ±2°	C-2008T2P-XX-XX		2.0mm PITCH CRIMP TERMINAL	
		UNIT:	APPROVED BY	CHECKED BY	DRAWN BY
		mm	Ivan Su	Deliang Li	Ryan
DWG TYPE.			2022/05/23	2022/05/23	2022/05/23
Customer Drawing					
			PAGE	REV.	
			1 OF 2	E	
			SCALE		
			8 : 1		

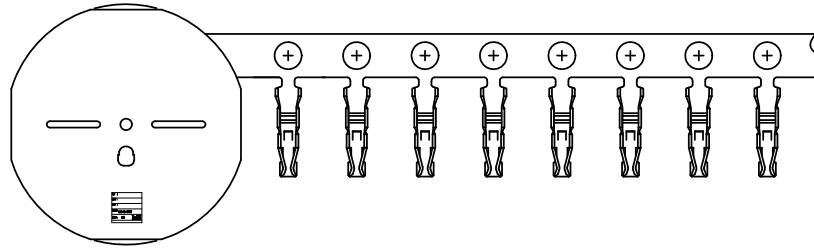
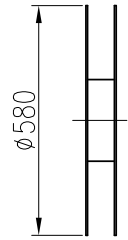
E	EC-22050071	ADD NO LOGO SPEC	Ryan	2022.05.23
D	EC-22030056	ADD GOLD PLASH PLATED	Lance Cheng	2022.02.18
REV.	ECN NO	REVISION RECORD	DRAW	DATE

RoHS

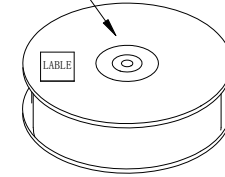
HF

CUST INFORMATION.

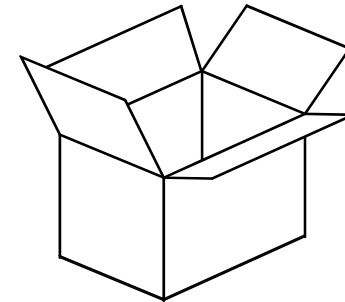
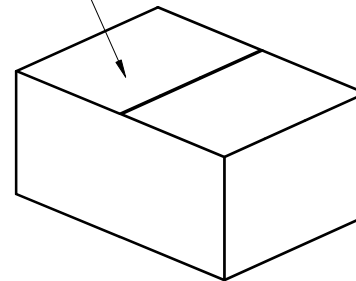
PART NO. NA	DRAWING NO. NA	REV. NA
----------------	-------------------	------------



Q'TY : 10000 PCS



Q'TY : 40000 PCS



CARTON SIZE (L*W*H)	GROSS WEIGHT	NET WEIGHT
(58.2*58.2*11.2cm)	4.52 Kg	2.52 Kg

TOLERANCE		PART NO.		朝貴電子股份有限公司 CKM ELECTRONICS CO., LTD.	
X.	X.XXX ±0.10	2008T2P-XX-XX			
X.X	±0.30	DRAWING NO.		TITLE.	
X.XX	±0.20	C-2008T2P-XX-XX		2.0mm PITCH CRIMP TERMINAL	
	UNIT:	APPROVED BY	CHECKED BY	DRAWN BY	PAGE
	mm	Ivan Su	Deliang Li	Ryan	2 OF 2
DWG TYPE.		2022/05/23	2022/05/23	2022/05/23	SCALE
Customer Drawing					1 : 1
				REV. E	

E	EC-22050071	ADD NO LOGO SPEC	Ryan	2022.05.23
D	EC-22030056	ADD GOLD PLASH PLATED	Lance Cheng	2022.02.18
REV.	ECN NO	REVISION RECORD	DRAW	DATE