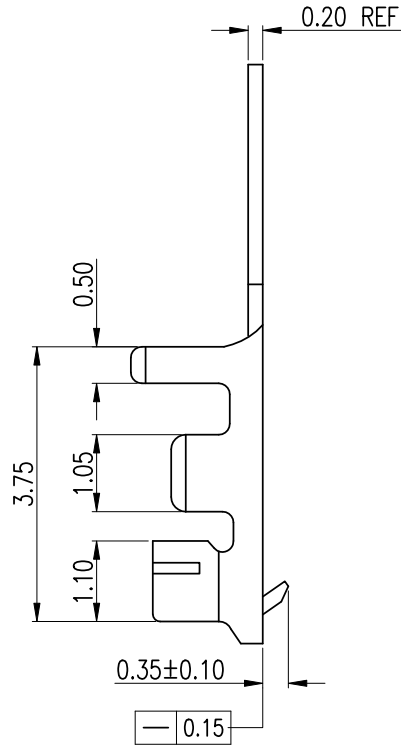
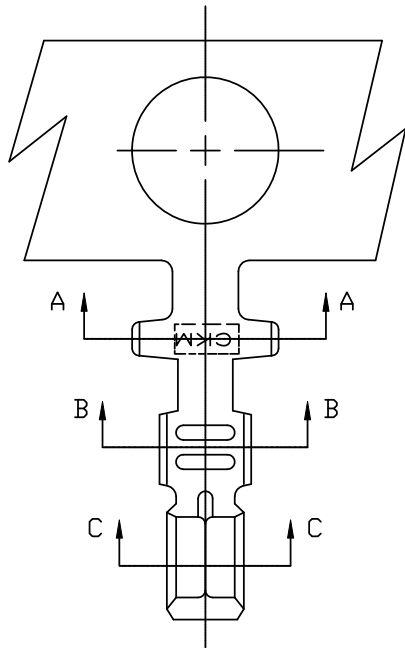
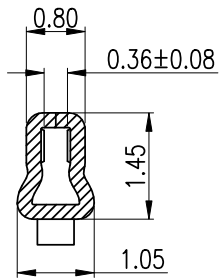


RoHS

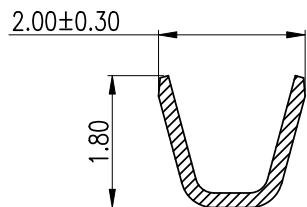


NOTES:

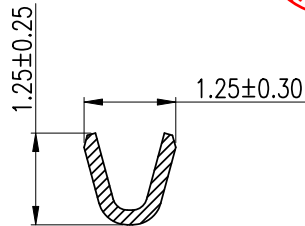
1. MATERIAL:0.20mm THICK PHOSPHOR BRONZE. .
2. PLATED:TIN/GOLD PLATING.
3. APPLICABLE WIRES:AWG#26~AWG#30,
4. INSULATOR O.D.: 0.50~1.1mm
5. RoHS COMPLIANT.
6. BILL OF PART NO:
1501TOP-XX
FINISH:B1=PRE-BRIGHT TIN PLATED
B2=POST-BRIGHT TIN PLATED
CX=GOLD PLATED
7. Q"ty/REEL:15,000 PCS.
8. FOR COLOR,AVAILABILITY,DELIVERY & MOQ,CONTACT CKM.



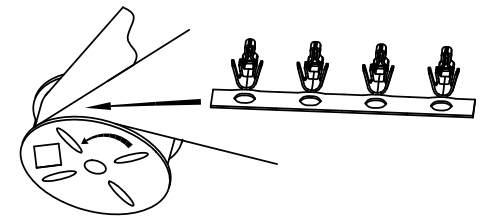
SECTION C-C



SECTION A-A



SECTION B-B



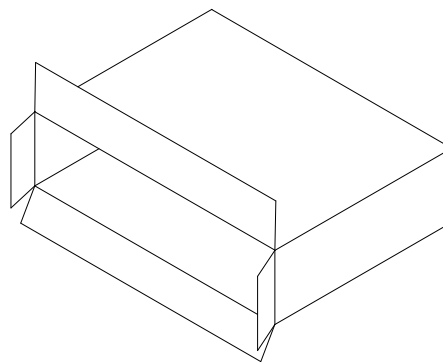
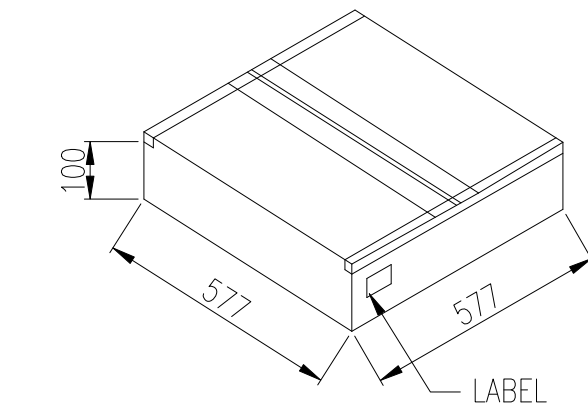
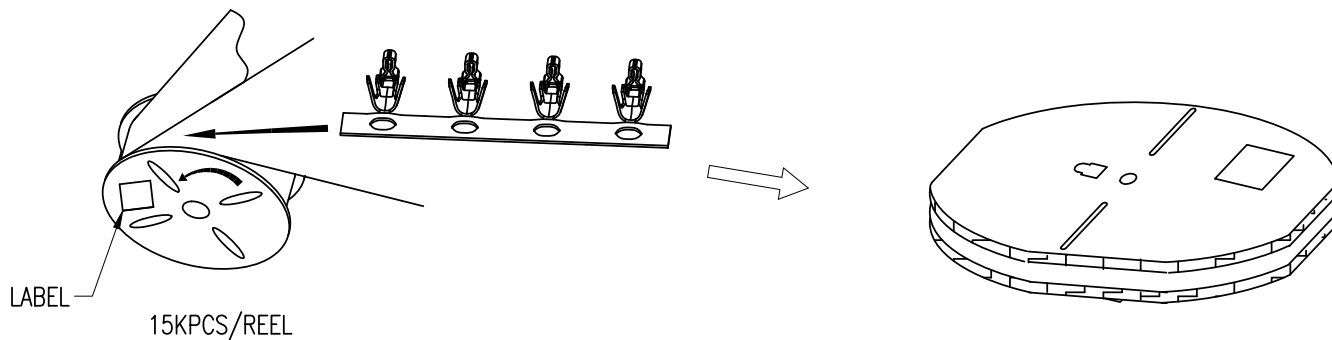
DRAW INTO DIRECTION

TOLERANCE X. X.XXX ±0.10 X.X ±0.30 X.XX ±0.20 Angular ±2°		PART NO. 1501TOP-XX		朝貴電子股份有限公司 CKM ELECTRONICS CO., LTD.	
		DRAWING NO. C-1501TOP-XX		DESCRIPTION WTB 1501 SERIES TERMINAL	
UNIT: mm		APPROVED BY Angus.Chen 2019.01.10	CHECKED BY Sun.Lee 2019.01.10	DRAWN BY Rock 2019.01.10	PAGE 1 OF 2
DWG TYPE. Customer Drawing				SCALE 8 : 1	REV. E

E	EC-19010165	UPGRADE DRAWING	Rock	2019.01.10
D	EC-18120032	UPGRADE DRAWING	Rock	2018.12.01
REV.	ECN NO	REVISION RECORD	DRAW	DATE

RoHS

CKM
2019.01.16
研发部



PART NO.	PCS/REEL	PCS/CARTON	NET WEIGHT (KG)	CROSS WEIGHT (KG)
1501TOP-XX	15K	45K	1.90	4.42

TOLERANCE X. X.XXX ±0.10 X.X ±0.30 X.XX ±0.20 Angular ±2°		PART NO. 1501TOP-XX		朝貴電子股份有限公司 CKM ELECTRONICS CO., LTD.	
		DRAWING NO. C-1501TOP-XX		DESCRIPTION WTB 1501 SERIES TERMINAL PACKING	
DWG TYPE. Customer Drawing		APPROVED BY Angus.Chen 2019.01.10	CHECKED BY Sun.Lee 2019.01.10	DRAWN BY Rock 2019.01.10	PAGE 2 OF 2 SCALE 8:1
				REV. E	

REV.	ECN NO	REVISION RECORD	DRAW	DATE
E	EC-19010165	UPGRADE DRAWING	Rock	2019.01.10
D	EC-18120032	UPGRADE DRAWING	Rock	2018.12.01