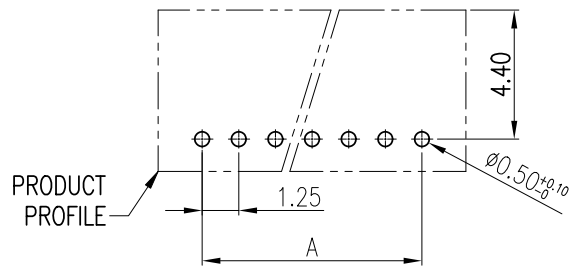
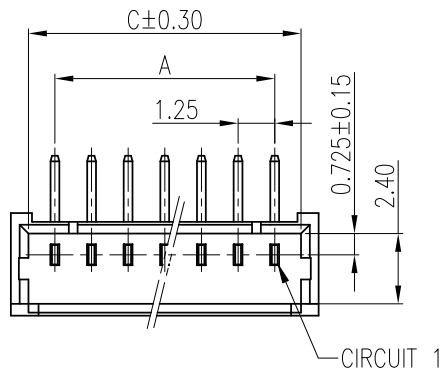


RoHS



HF



P.C. BOARD LAYOUT
TOLERANCES: ±0.05
(PCB THK=0.8)

NO. OF CIRCUITS: 2~15

FINISH
A=MATTE TIN PLATED
B=BRIGHT TIN PLATED
C=GOLD FLASH PLATED

NOTE:

1. MATERIAL SPECIFICATION:

1.1 INSULATION: LCP UL 94V-0.

1.2 CONTACT: THICK 0.3mm PHOSPHOR BRONZE.

2. FINISH SPECIFICATION:

2.1 CONTACT: TIN/GOLD PLATED

3. RoHS & HF COMPLIANCE

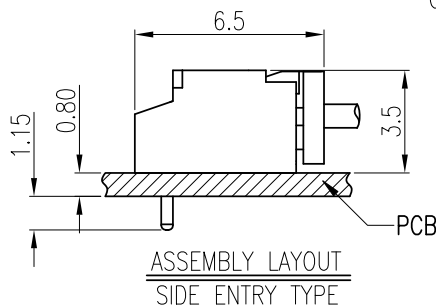
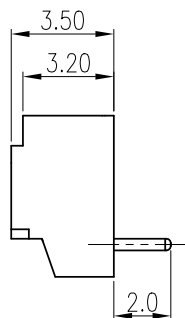
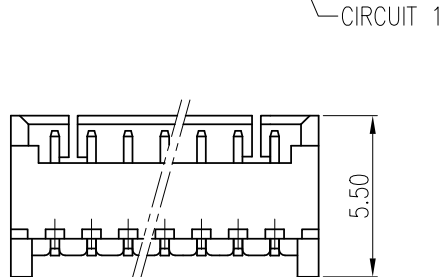
4. BILL OF PART NO:

1253WR-XP-X X-XXX-HF

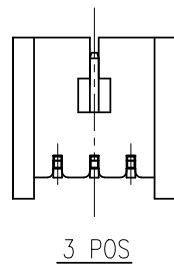
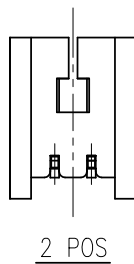
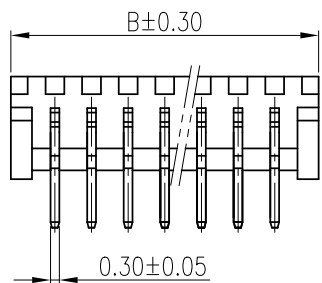
HF=HALOGEN FREE
VOID CIRCUITS: BLANK=STANDARD
OR 1~3 ALPHANUMERIC DIGITS
COLOR: BLANK(NATURAL) OR A~Z

5. FOR COLOR, AVAILABILITY, DELIVERY & MOQ, CONTACT CKM

6. DIMENSIONAL



POS	A	B	C
2		4.25	3.05
3	2.50	5.50	4.30
4	3.75	6.75	5.55
5	5.00	8.00	6.80
6	6.25	9.25	8.05
7	7.50	10.50	9.30
8	8.75	11.75	10.55
9	10.00	13.00	12.80
10	11.25	14.25	14.05
11	12.50	15.50	15.30
12	13.75	16.75	16.55
13	15.00	18.00	17.80
14	16.25	19.25	19.05
15	17.50	20.50	20.50



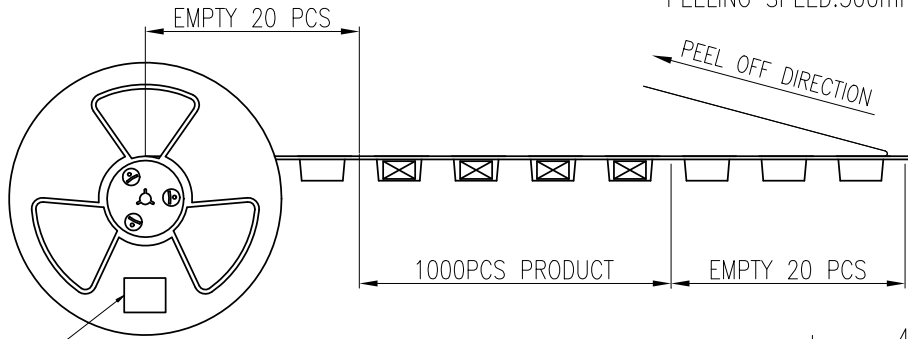
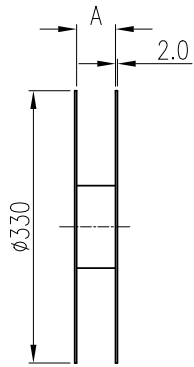
TOLERANCE	
X.	X.XXX ±0.10
X.X ±0.30	
X.XX ±0.20	Angular ±2°
	UNIT: mm
DWG TYPE: Customer Drawing	

PART NO. 1253WR-XP-XX-XXX-HF	
DRAWING NO. C-125102X6-XXHF	
APPROVED BY Ivan.Su 2022.05.23	CHECKED BY Sun.Lee 2022.05.23

朝貴電子股份有限公司 CKM ELECTRONICS CO., LTD.	
DESCRIPTION CKM1253WR WERIES 1.25mm PITCH R/A DIP TYPE CONNECTOR	
DRAWN BY Rock 2022.05.23	PAGE 1 OF 2
SCALE 5 : 1	REV. C

C	EC-22050072	UPGRADE DESCRIPTION	Rock	2022.05.23
B		ADDS PACKING DIAGRAM	Rock	2016.12.30
REV.	ECN NO	REVISION RECORD	DRAW	DATE

RoHS



PEELING STRENGTH:10~130GF
PEELING SPEED:300mm/Min

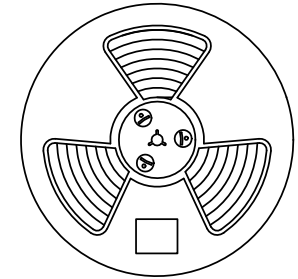


TABLE 2:

POS	PCS/REEL	PCS/CARTON	NET WEIGHT (KG)	CROSS WEIGHT (KG)
2	1000	3000	0.34	2.39
3	1000	3000	0.47	2.49
4	1000	3000	0.52	2.53
5	1000	3000	0.61	2.60
6	1000	3000	0.71	2.67
7	1000	3000	0.80	2.74
8	1000	3000	0.89	2.82
9	1000	3000	0.99	3.37
10	1000	3000	1.08	3.44
11	1000	3000	1.17	3.51
12	1000	3000	1.27	3.59
13	1000	3000	1.36	3.66
14	1000	3000	1.45	3.73
15	1000	3000	1.55	3.80

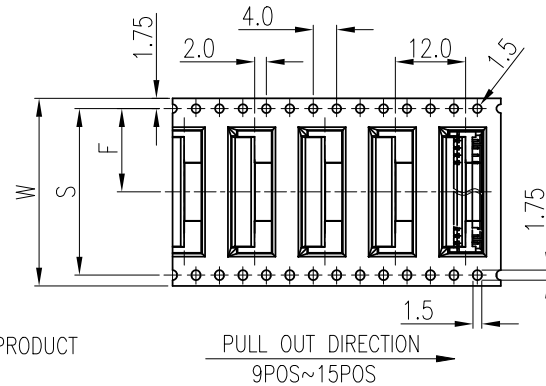
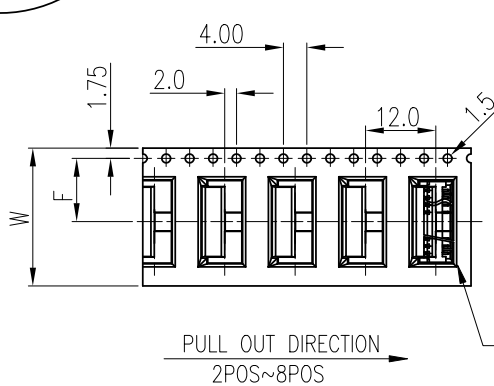
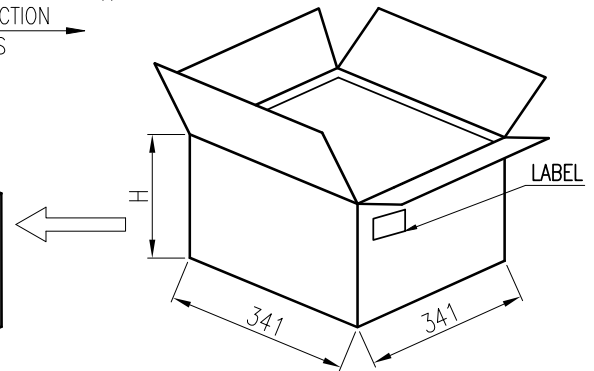
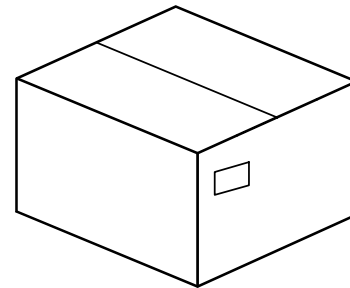


TABLE 1:

POS.	A	W	S	F	H
2~8	24.5	24.0	/	11.5	120
9~15	32.5	32.0	28.4	14.2	145



TOLERANCE X. X.XXX ±0.10 X.X ±0.30 X.XX ±0.20 Angular ±2°		PART NO. 1253WR-XP-XX-XXX-HF		朝貴電子股份有限公司 CKM ELECTRONICS CO., LTD.	
		DRAWING NO. C-125102X6-XXHF		DESCRIPTION CKM1253WR WERIES 1.25mm PITCH R/A DIP TYPE CONNECTOR	
DWG TYPE. Customer Drawing		APPROVED BY Ivan.Su 2022.05.23	CHECKED BY Sun.Lee 2022.05.23	DRAWN BY Rock 2022.05.23	PAGE 2 OF 2 SCALE 5 : 1
				REV. C	

C	EC-22050072	UPGRADE DESCRIPTION	Rock	2022.05.23
B		ADDS PACKING DIAGRAM	Rock	2016.12.30
REV.	ECN NO	REVISION RECORD	DRAW	DATE