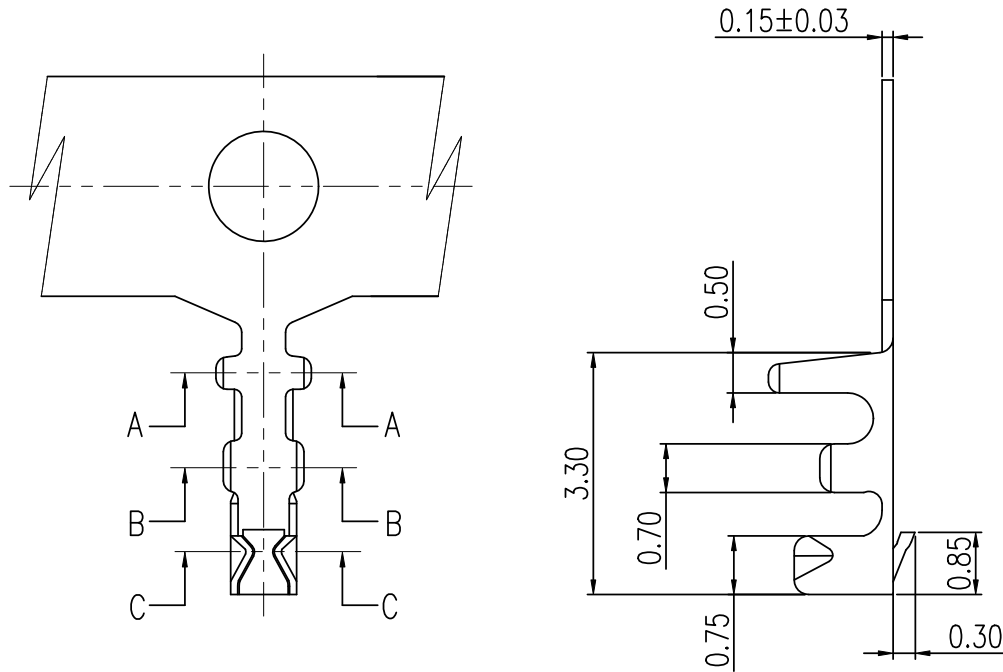
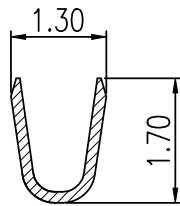


1 RoHS

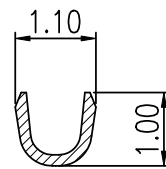


NOTES:

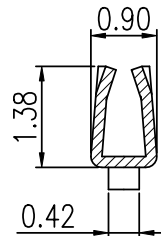
1. MATERIAL: 0.15mm THICK PHOSPHOR BRONZE.
2. FINISH: POST-BRIGHT TIN PLATING
3. APPLICABLE WIRES: AWG#28~AWG#32,
4. INSULATOR O.D.: 1.0mm MAX.
5. RoHS COMPLIANT.
6. FOR AVAILABILITY, DELIVERY & MOQ, CONTACT CKM.



SEC A-A



SEC B-B



SEC C-C

<b>TOLERANCE</b>		<b>PART NO.</b>		朝貴電子股份有限公司 CKM ELECTRONICS CO., LTD.	
X.	X.XXX ±0.10	1251TOP-B2			
X.X	±0.30	<b>DRAWING NO.</b>		<b>DESCRIPTION</b>	
X.XX	±0.20	C-12510301		1.25mm PITCH CRIMP TERMINAL	
		<b>UNIT:</b>		<b>APPROVED BY</b>	
		mm		Ivan.Su	
<b>DWG TYPE.</b>		<b>CHECKED BY</b>		<b>DRAWN BY</b>	
Customer Drawing		Sun.Lee		Rock	
		2022.08.08		2022.08.08	
				<b>PAGE</b>	
				1 OF 2	
				<b>SCALE</b>	
				10 : 1	
				<b>REV.</b>	
				E	

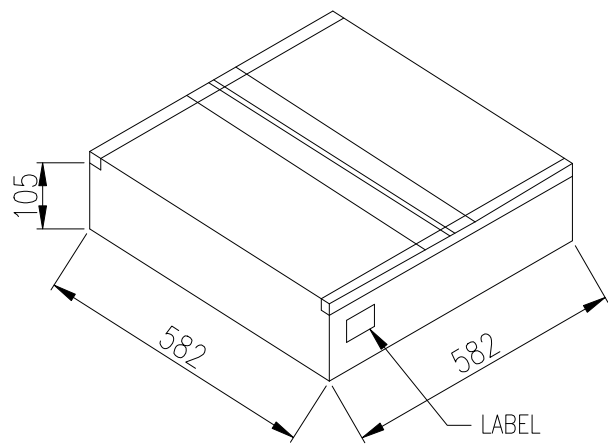
E		UPGRADE DRAWING	Rock	2022.08.08
D		UPGRADE DRAWING	Rock	2018.02.02
REV.	ECN NO	REVISION RECORD	DRAW	DATE

RoHS



LABEL

CKM  
2022.08.24  
研发部



PART NO.	PCS/REEL	PCS/CARTON	NET WEIGHT (KG)	GROSS WEIGHT (KG)
1251TOH-B2	20K	60K	1.68	4.02

<b>TOLERANCE</b>		<b>PART NO.</b> 1251TOP-B2		朝貴電子股份有限公司 CKM ELECTRONICS CO., LTD.	
X.                    X.XXX ±0.10		<b>DRAWING NO.</b> C-12510301			
X.X ±0.30		<b>APPROVED BY</b> Ivan.Su 2022.08.08		<b>CHECKED BY</b> Sun.Lee 2022.08.08	
X.XX ±0.20	Angular ±2°			<b>DRAWN BY</b> Rock 2022.08.08	
		<b>UNIT:</b> mm		<b>SCALE</b> 1:1	
<b>DWG TYPE.</b> Customer Drawing				<b>REV.</b> E	

E		UPGRADE DRAWING	Rock	2022.08.08
D		UPGRADE DRAWING	Rock	2018.02.02
REV.	ECN NO	REVISION RECORD	DRAW	DATE