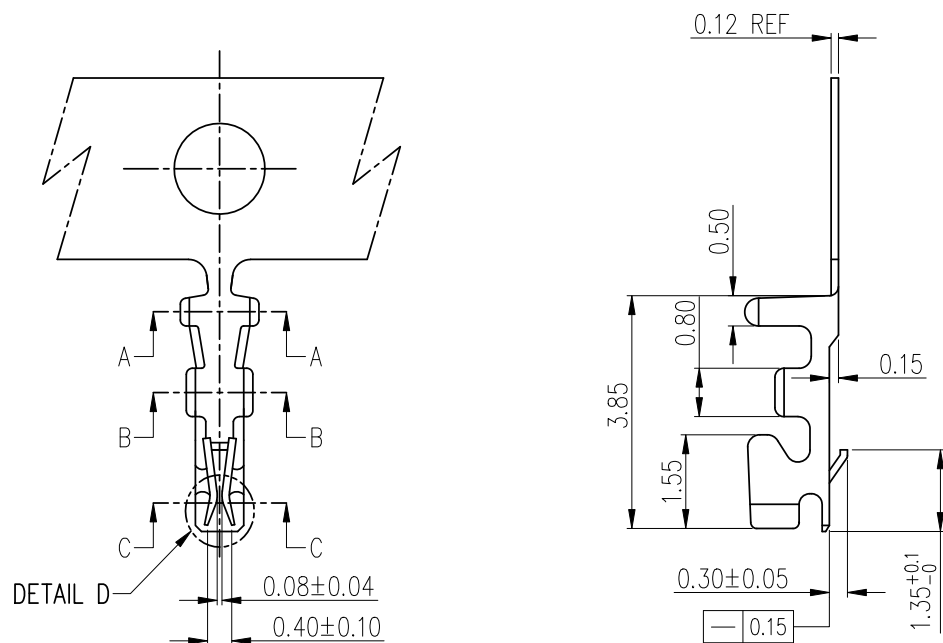
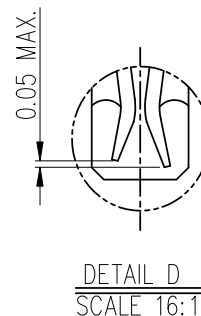
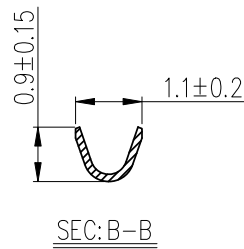
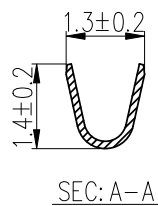
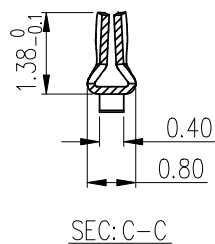


RoHS



NOTES:

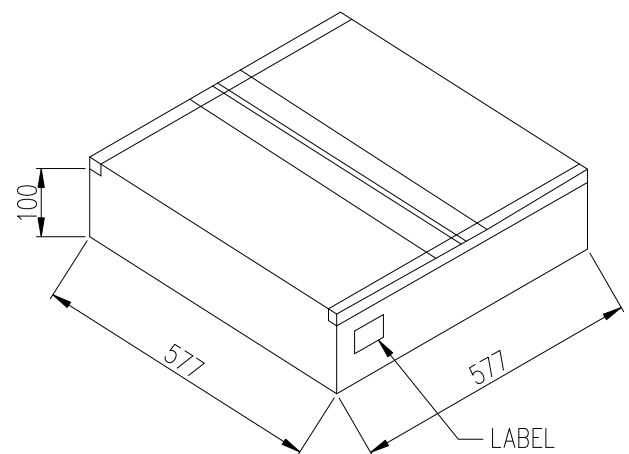
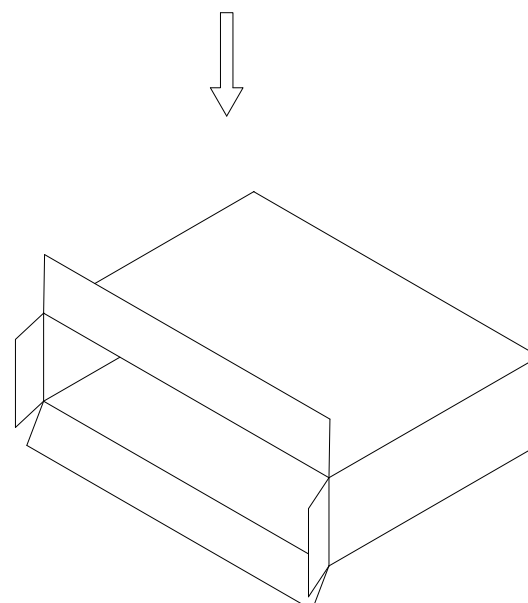
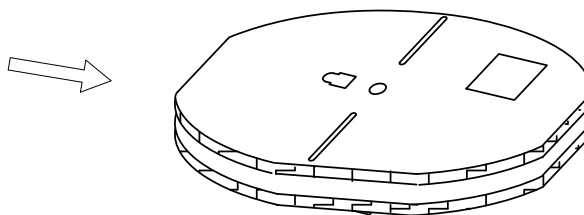
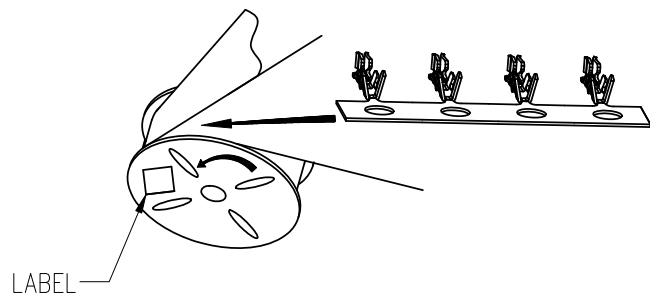
1. MATERIAL: 0.12mm THICK PHOSPHOR BRONZE.
2. PLATED: TIN/GOLD PLATING.
3. APPLICABLE WIRES: AWG#28~AWG#32,
4. INSULATOR O.D.: 0.40~0.80mm.
5. RoHS COMPLIANT.
6. BILL OF PART NO:
1001TOP-XX
FINISH:
B1=PRE-BRIGHT TIN PLATED
C=GOLD FLASH PLATED
7. FOR COLOR, AVAILABILITY, DELIVERY & MOQ, CONTACT CKM.



L	EC-19010165	UPGRADE PACAKING	Rock	2019.01.10
J		UPGRADE PACAKING	Rock	2018.12.04
REV.	ECN NO	REVISION RECORD	DRAW	DATE

TOLERANCE X. X.XX ±0.30 X.XX ±0.20 X.XXX ±0.10 Angular ±2°		PART NO. 1001TOP-XX		朝貴電子股份有限公司 CKM ELECTRONICS CO., LTD.	
UNIT: mm DWG TYPE. Customer Drawing		DRAWING NO. C-1001TOP-XX		DESCRIPTION 1.00mm PITCH CRIMP TERMINAL	
APPROVED BY		CHECKED BY		DRAWN BY	
				PAGE 1 OF 2	
				SCALE 8 : 1	
				REV. L	

RoHS



CKM
2019.01.16
研发部

PART NO.	PCS/REEL	PCS/CARTON	NET WEIGHT (KG)	GROSS WEIGHT (KG)
1001TOP-XX	20K	60K	1.56	4.08

TOLERANCE X. X.XX ±0.30 X.XX ±0.20 Angular ±2°		PART NO. 1001TOP-XX		朝貴電子股份有限公司 CKM ELECTRONICS CO., LTD.	
		DRAWING NO. C-1001TOP-XX		DESCRIPTION 1.00mm PITCH CRIMP TERMINAL PACKING	
UNIT: mm		APPROVED BY	CHECKED BY	DRAWN BY	PAGE 2 OF 2
DWG TYPE. Customer Drawing					REV. L
				SCALE 8 : 1	

REV.	ECN NO	REVISION RECORD	DRAW	DATE
L	EC-19010165	UPGRADE PACAKING	Rock	2019.01.10
J		UPGRADE PACAKING	Rock	2018.12.04