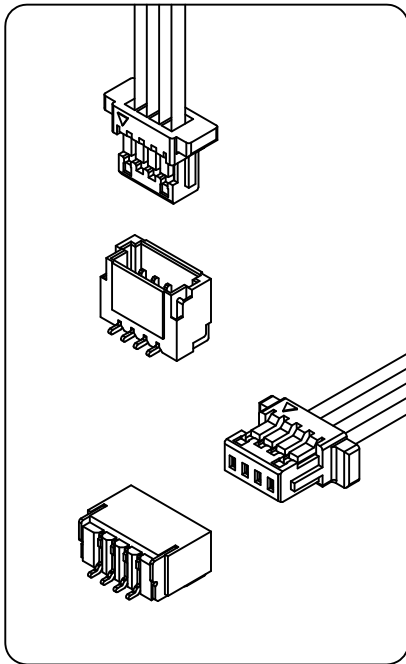


1001 Series

1.00mm[.039] pitch Wire to Board Connector



Specifications:

Circuit	2~20 Poles
Pitch between poles	1.00mm
Rated Voltage	50V AC,DC
Rated Current	1A (AWG #28)
Withstand Voltage	500V AC/minute
Contact Resistance	10mΩ Max.
Insulation Resistance	100MΩ Min.
Temperature Range	-25°~+85°C
Applicable Wire Range	AWG #28~#32

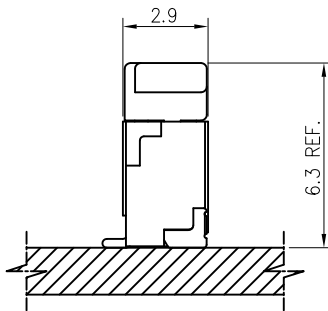
UL: Recognized No. E186634

CSA: Certified No. LR110611

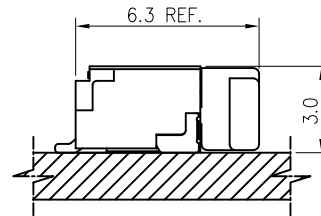
RoHS-Specification

Assembly Layout

Vertical Type



Right Angle Type



Ordering Code

① ② ③ ④ ⑤
1001 H -XP -X -HF

- ① Series No.
- ② Housing
- ③ No. of circuits: 2~20
- ④ Color Code: Blank(Natural) or X(other)
- ⑤ HF: Halogen Free (or not)

① ② ③④ ⑤
1001 T XX -XX

- ① Series No.
- ② Terminal
- ③ Crimp Type: 0=Standart Type
- ④ Material: Phosphor bronze
- ⑤ Plated Code: B1=Per-Tin Plated
B2=Post-Tin Plated

① ②③④ ⑤ ⑥⑦
1001 WXS -XP -XX

- ① Series No.
- ② Wafer
- ③ Entry Type: WV=Vertical
WR=Right angle
- ④ Solder Type: S=SMT Type
- ⑤ No. of circuits: 2~20
- ⑥ Plating code: A=Matte Tin
- ⑦ Color Code: Blank(Natural)

Note: * (eg. A, B, X...) designates Plated thickness identification.
For availability, delivery, color and MOQ, contact CKM.

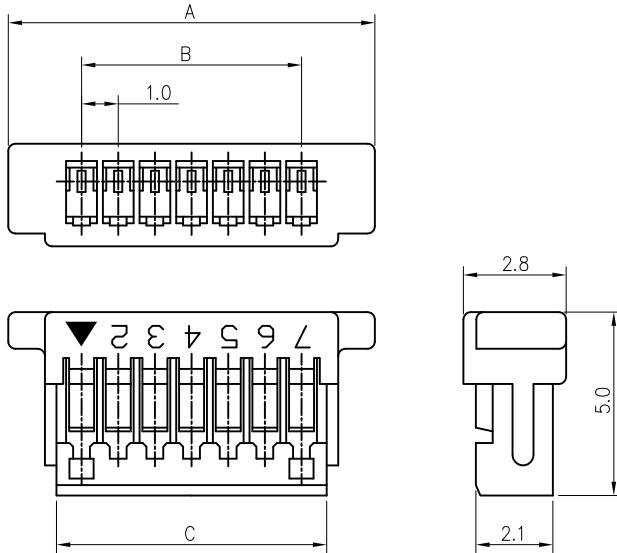
1001 Series

1.00mm[.039] pitch Crimp Terminal Socket



Features:

- * Single Row Terminal Socket
- * Material : Nylon 66 UL 94V-0 (Natural)
- * Suitable for CKM 1001 series terminal
- * CKM P/N : 1001H-XP-X-XX



Dimensional & Ordering Information:

POS	Dimensions		
	A	B	C
2	5.0	1.0	2.37
3	6.0	2.0	3.37
4	7.0	3.0	4.37
5	8.0	4.0	5.37
6	9.0	5.0	6.37
7	10.0	6.0	7.37
8	11.0	7.0	8.37
9	12.0	8.0	9.37
10	13.0	9.0	10.37
11	14.0	10.0	11.37
12	15.0	11.0	12.37
13	16.0	12.0	13.37
14	17.0	13.0	14.37
15	18.0	14.0	15.37
16	19.0	15.0	16.37
17	20.0	16.0	17.37
18	21.0	17.0	18.37
19	22.0	18.0	19.37
20	23.0	19.0	20.37

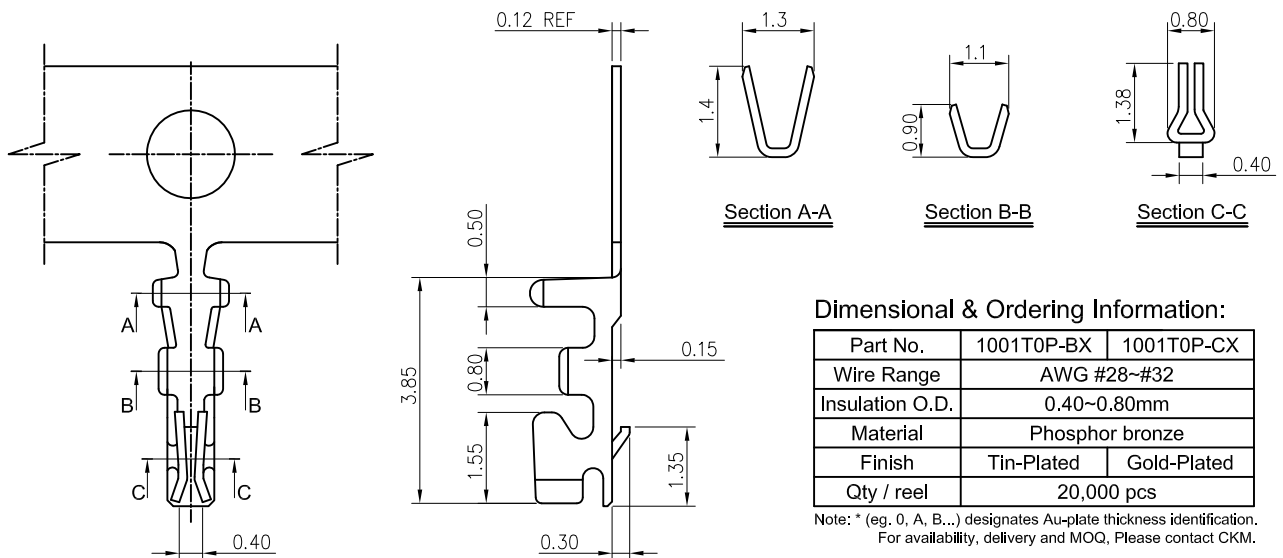
Note: X (eg. A, XX...) Designates Color, Material, identification.
For availability, delivery and MOQ, Please contact CKM.

1001 Series

1.00mm[.039] pitch Crimp Terminal

Features:

- * Used in CKM 1001 series socket
- * Material : 0.15mm thick Phosphor bronze, Tin or Gold-plated
- * CKM P/N : 1001T0P-XX



Dimensional & Ordering Information:

Part No.	1001T0P-BX	1001T0P-CX
Wire Range	AWG #28~#32	
Insulation O.D.	0.40~0.80mm	
Material	Phosphor bronze	
Finish	Tin-Plated	Gold-Plated
Qty / reel	20,000 pcs	

Note: * (eg. 0, A, B...) designates Au-plate thickness identification.
For availability, delivery and MOQ, Please contact CKM.

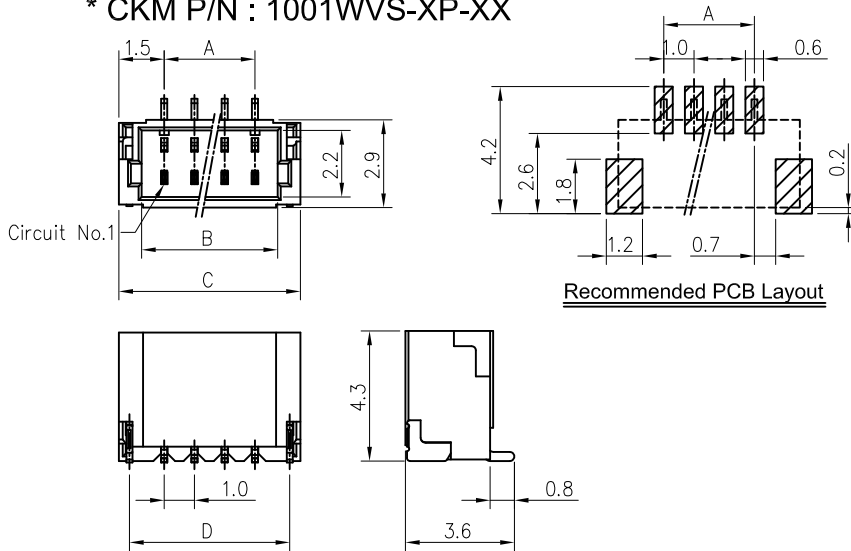
1001 Series

1.0mm[.039] pitch Wafer (Vertical-SMT Type)



Features:

- * Single Row Vertical-SMT Type Wafer
- * Material : Insulator: Thermoplastic UL 94V-0 (Natural)
Contact Post: 0.20mm thick Brass,
Matte Tin or Gold-plated
Solder Tab: 0.20mm thick Brass, Tin-plated
- * Mates with CKM 1001 series socket
- * CKM P/N : 1001WVS-XP-XX



Dimensional & Ordering Information:

POS	Dimensions			
	A	B	C	D
2	1.0	2.5	4.0	3.37
3	2.0	3.5	5.0	4.37
4	3.0	4.5	6.0	5.37
5	4.0	5.5	7.0	6.37
6	5.0	6.5	8.0	7.37
7	6.0	7.5	9.0	8.37
8	7.0	8.5	10.0	9.37
9	8.0	9.5	11.0	10.37
10	9.0	10.5	12.0	11.37
11	10.0	11.5	13.0	12.37
12	11.0	12.5	14.0	13.37
13	12.0	13.5	15.0	14.37
14	13.0	14.5	16.0	15.37
15	14.0	15.5	17.0	16.37
16	15.0	16.5	18.0	17.37
17	16.0	17.5	19.0	18.37
18	17.0	18.5	20.0	19.37
19	18.0	19.5	21.0	20.37
20	19.0	20.5	22.0	21.37

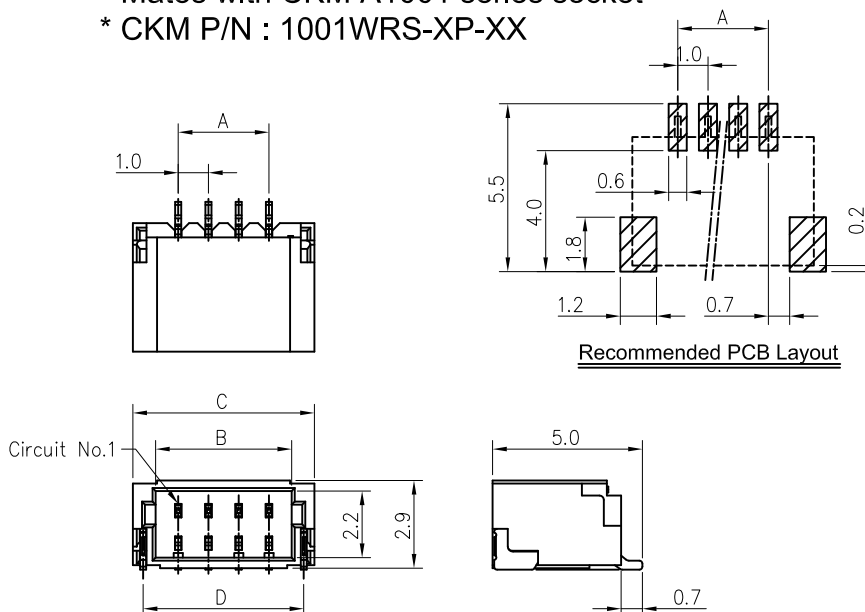
Note: X (eg. A, XX...) Designates Color, Material, Identification.
For availability, delivery and MOQ, Please contact CKM.

1001 Series

1.0mm[.039] pitch Wafer (Right Angle-SMT Type)

Features:

- * Single Row Right Angle-SMT Type Wafer
- * Material : Insulator: Thermoplastic UL 94V-0 (Natural)
Contact Post: 0.20mm thick Phosphor bronze,
Matte Tin or Gold-plated
Solder Tab: 0.20mm thick Brass, Tin-plated
- * Mates with CKM A1001 series socket
- * CKM P/N : 1001WRS-XP-XX



Dimensional & Ordering Information:

POS	Dimensions			
	A	B	C	D
2	1.0	2.5	4.0	3.3
3	2.0	3.5	5.0	4.3
4	3.0	4.5	6.0	5.3
5	4.0	5.5	7.0	6.3
6	5.0	6.5	8.0	7.3
7	6.0	7.5	9.0	8.3
8	7.0	8.5	10.0	9.3
9	8.0	9.5	11.0	10.3
10	9.0	10.5	12.0	11.3
11	10.0	11.5	13.0	12.3
12	11.0	12.5	14.0	13.3
13	12.0	13.5	15.0	14.3
14	13.0	14.5	16.0	15.3
15	14.0	15.5	17.0	16.3
16	15.0	16.5	18.0	17.3
17	16.0	17.5	19.0	18.3
18	17.0	18.5	20.0	19.3
19	18.0	19.5	21.0	20.3
20	19.0	20.5	22.0	21.3

Note: X (eg. A, XX...) Designates Color, Material, identification.
For availability, delivery and MOQ, Please contact CKM.